

See discussions, stats, and author profiles for this publication at: <https://www.researchgate.net/publication/334500694>

# The Lancet Psychiatry Commission: a blueprint for protecting physical health in people with mental illness

Article in *The Lancet Psychiatry* · August 2019

DOI: 10.1016/S2215-0366(19)30132-4

CITATIONS

8

READS

2,136

42 authors, including:



**Joseph Firth**

Western Sydney University

186 PUBLICATIONS 2,750 CITATIONS

[SEE PROFILE](#)



**Najma Siddiqi**

The University of York

69 PUBLICATIONS 1,454 CITATIONS

[SEE PROFILE](#)



**Ai Koyanagi**

Parc Sanitari Sant Joan de Déu

393 PUBLICATIONS 12,975 CITATIONS

[SEE PROFILE](#)



**Dan J Siskind**

The University of Queensland

140 PUBLICATIONS 1,295 CITATIONS

[SEE PROFILE](#)

Some of the authors of this publication are also working on these related projects:



MOVEDEP - Movement for depression [View project](#)



Create new project "The MALT Study" [View project](#)

## The Lancet Psychiatry Commission: a blueprint for protecting physical health in people with mental illness



Joseph Firth, Najma Siddiqi\*, Ai Koyanagi\*, Dan Siskind\*, Simon Rosenbaum\*, Cherrie Galletly\*, Stephanie Allan, Constanza Caneo, Rebekah Carney, Andre F Carvalho, Mary Lou Chatterton, Christoph U Correll, Jackie Curtis, Fiona Gaughran, Adrian Heald, Erin Hoare, Sarah E Jackson, Steve Kisely, Karina Lovell, Mario Maj, Patrick D McGorry, Cathrine Mihalopoulos, Hannah Myles, Brian O'Donoghue, Toby Pillinger, Jerome Sarris, Felipe B Schuch, David Shiers, Lee Smith, Marco Solmi, Shuichi Suetani, Johanna Taylor, Scott B Teasdale, Graham Thornicroft, John Touros, Tim Usherwood, Davy Vancampfort, Nicola Veronese, Philip B Ward, Alison R Yung, Eoin Killackey†, Brendon Stubbs‡

### Executive summary

#### Background

The poor physical health of people with mental illness is a multifaceted, transdiagnostic, and global problem. People with mental illness have an increased risk of physical disease, as well as reduced access to adequate health care. As a result, physical health disparities are observed across the entire spectrum of mental illnesses in low-income, middle-income, and high-income countries. The high rate of physical comorbidity, which often has poor clinical management, drastically reduces life expectancy for people with mental illness, and also increases the personal, social, and economic burden of mental illness across the lifespan.

This Commission summarises advances in understanding on the topic of physical health in people with mental illness, and presents clear directions for health promotion, clinical care, and future research. The wide range and multifactorial nature of physical health disparities across the range of mental health diagnoses generate a vast number of potential considerations. Therefore, rather than attempting to discuss all possible combinations of physical and mental comorbidities individually, the aims of this Commission are to: (1) establish highly pertinent aspects of physical health-related morbidity and mortality that have transdiagnostic applications; (2) highlight the common modifiable factors that drive disparities in physical health; (3) present actions and initiatives for health policy and clinical services to address these issues; and (4) identify promising areas for future research that could identify novel solutions. These aims are addressed across the five parts of the Commission: in Parts 1 and 2 we describe the scope, priorities, and key targets for physical health improvement across multiple mental illnesses; in Parts 3, 4, and 5, we highlight emerging strategies and present recommendations for improving physical health outcomes in people with mental illness.

#### Part 1: Physical health disparities for people with mental illness

Part 1 summarises the findings of almost 100 systematic reviews and meta-analyses on the prevalence of physical comorbidities among people with mental illness. Around 70% of the meta-research focuses on cardiometabolic diseases, and consistently reports that mental illnesses are associated with a risk of obesity, diabetes,

and cardiovascular diseases that is 1.4–2.0 times higher than in the general population. Although cardiometabolic diseases have mostly been studied in patients with severe mental illness (particularly psychotic disorders), the prevalence of cardiometabolic disease is also increased in individuals with a broad range of other diagnoses, including substance use disorders and so-called common mental disorders (such as depression and anxiety).

#### Part 2: Key modifiable factors in health-related behaviours and health services

Part 2 presents a hierarchical model of evidence synthesis to evaluate modifiable risk factors for physical diseases in mental illness. Most top-tier evidence has identified that smoking, excessive alcohol consumption, sleep disturbance, physical inactivity, and dietary risks are increased for a broad range of diagnoses, across various economic settings, and from illness onset. Additionally, parts 1 and 2 identify a scarcity of meta-research on the prevalence or risk factors of infectious diseases and physical multimorbidity in mental illness. We also highlight that increased attention on these areas will be particularly important in addressing the physical and mental comorbidities observed in low-income and middle-income settings.

#### Part 3: Interplay between psychiatric medications and physical health

Part 3 examines the interactions between psychotropic medications and physical health across a range of conditions. Antipsychotics remain the best evidence-based treatments for psychotic disorders and reduce mortality rates compared with no treatment, but they have adverse effects on many aspects of physical health. Although drugs for depression have a less immediate effect on cardiometabolic health than drugs for psychosis per individual, drugs for depression are prescribed much more commonly, and the number of prescriptions is increasing over time. Therefore, further research is required to establish the population burden of the cardiometabolic side-effects of drugs for depression, particularly from long-term use. Part 3 also discusses emerging pharmacological strategies for attenuating and managing physical health risks, and provides recommendations for improving prescribing practices.

Lancet Psychiatry 2019

Published Online  
July 16, 2019  
[http://dx.doi.org/10.1016/S2215-0366\(19\)30132-4](http://dx.doi.org/10.1016/S2215-0366(19)30132-4)

See Online/Comment  
[http://dx.doi.org/10.1016/S2215-0366\(19\)30251-2](http://dx.doi.org/10.1016/S2215-0366(19)30251-2)  
[http://dx.doi.org/10.1016/S2215-0366\(19\)30252-4](http://dx.doi.org/10.1016/S2215-0366(19)30252-4)

\*Section lead authors

†Contributed equally

**NICM Health Research Institute, Western Sydney University, Westmead, NSW, Australia** (J Firth PhD, Prof J Sarris PhD); **Division of Psychology and Mental Health, School of Health Sciences** (J Firth, R Carney PhD, D Shiers MBChB, Prof A R Yung MD), **Division of Diabetes, Endocrinology and Gastroenterology** (A Heald DM), **and Division of Nursing, Midwifery and Social Work** (Prof K Lovell PhD), **Faculty of Biology, Medicine and Health, University of Manchester, Manchester, UK**; **Centre for Youth Mental Health** (J Firth, Prof P D McGorry MD, B O'Donoghue PhD, Prof A R Yung, Prof E Killackey DPsych), **Orygen, The National Centre of Excellence in Youth Mental Health** (Prof P D McGorry, B O'Donoghue, Prof A R Yung, Prof E Killackey), **and Department of Psychiatry** (Prof J Sarris), **University of Melbourne, Melbourne, VIC, Australia**; **Department of Health Sciences, University of York, Hull York Medical School** (N Siddiqi PhD, J Taylor PhD); **Bradford District Care NHS Foundation Trust, Bradford, UK** (N Siddiqi); **Research and Development Unit, Parc Sanitari Sant Joan de Déu, Universitat de Barcelona, Fundació Sant Joan de Déu, Barcelona, Spain** (A Koyanagi MD); **Instituto de Salud Carlos III, Centro de**

Investigación Biomédica en Red de Salud Mental, Madrid, Spain (A Koyanagi); Institució Catalana de Recerca i Estudis Avançats, Barcelona, Spain (A Koyanagi); Metro South Addiction and Mental Health Service, Brisbane, QLD, Australia (D Siskind PhD, S Suetani MD); School of Medicine (D Siskind, Prof S Kisely DMedRes) and Queensland Brain Institute (S Suetani), University of Queensland, Brisbane, QLD, Australia; School of Psychiatry, Faculty of Medicine (S Rosenbaum PhD, Prof J Curtis MBBS, S B Teasdale PhD, Prof P B Ward PhD) and The George Institute for Global Health (Prof T Usherwood MD), University of New South Wales, Sydney, NSW, Australia; Ramsay Health Care Mental Health, Adelaide, SA, Australia (Prof C Galletly MD); Northern Adelaide Local Health Network, Adelaide, SA, Australia (Prof C Galletly MD); Institute of Health and Wellbeing, University of Glasgow, Glasgow, UK (S Allan MA); Departamento de Psiquiatria, Pontificia Universidad Católica de Chile, Santiago, Chile (C Caneo MD); Youth Mental Health Research Unit (R Carney) and Psychosis Research Unit (D Shiers), Greater Manchester Mental Health NHS Foundation Trust, Manchester, UK; Centre for Addiction and Mental Health, Toronto, ON, Canada (Prof A F Carvalho MD); Department of Psychiatry, University of Toronto, Toronto, ON, Canada (Prof A F Carvalho); Deakin Health Economics, Institute for Health Transformation, Faculty of Health (M L Chatterton PharmD, Prof C Mihalopoulos PhD) and Food and Mood Centre (E Hoare PhD), Deakin University, Melbourne, VIC, Australia; Donald and Barbara Zucker School of Medicine at Hofstra/Northwell, Hempstead, NY, USA (Prof C U Correll MD); Department of Psychiatry, Zucker Hillside Hospital, Glen Oaks, NY, USA (Prof C U Correll); Department of Child and Adolescent Psychiatry, Charité Universitätsmedizin, Berlin, Germany (Prof C U Correll); South London and Maudsley NHS Foundation Trust,

## Part 4: Multidisciplinary approaches to multimorbidity

Part 4 discusses multidisciplinary lifestyle interventions in mental health care. The Diabetes Prevention Program (DPP) is an example of a gold-standard lifestyle intervention that has broadly been successful in the general population. However, people with mental illness rarely have access to programmes based on the principles of the DPP, through either primary care or secondary care services. Based on the findings of large-scale clinical trials, we propose that future lifestyle interventions in mental health care must adopt the core principles of the DPP by partnering with appropriately trained physical health professionals, and by providing sufficient access to supervised exercise services. Prevention is a key focus of the DPP. Similarly, lifestyle interventions for people with mental illness should be available pre-emptively to protect metabolic health from the point of the first presentation of illness. Priorities for future initiatives and research include translating the principles of the DPP into interventions for people with mental illness across primary care, secondary services, and low-income and middle-income settings, and using implementation science and cost-effectiveness evaluations to develop a business case for integrating DPP-based interventions as the standard of care in mental health care.

## Part 5: Innovations in integrating physical and mental health care

Part 5 focuses on the availability, content, and context of physical health care for people with mental illness. We summarise valuable new resources and guidelines from national and international health bodies that aim to address inequalities in both public health and clinical settings. National health strategies urgently need to give greater consideration to individuals with mental illness, who are often left behind from population gains in public health. The development of integrated care models for efficient management of physical and mental multimorbidity is an important step forwards, particularly in low-income and middle-income settings where health inequalities for people with mental illness are greatest. Similarly, taking a syndemic approach to the interaction between physical and mental comorbidities might improve the implementation of customised health interventions for a specific location or social setting. Continuing advances in digital health technologies also present new opportunities for addressing health inequalities on a global scale, although realising this potential will be dependent on further rigorous research. The Commission concludes with a discussion on the accountabilities and responsibilities of governments, health commissioners, health providers, and research funding bodies in implementing the recommendations of this Commission and protecting the physical health of people with mental illness.

## Part 1: Physical health disparities for people with mental illness

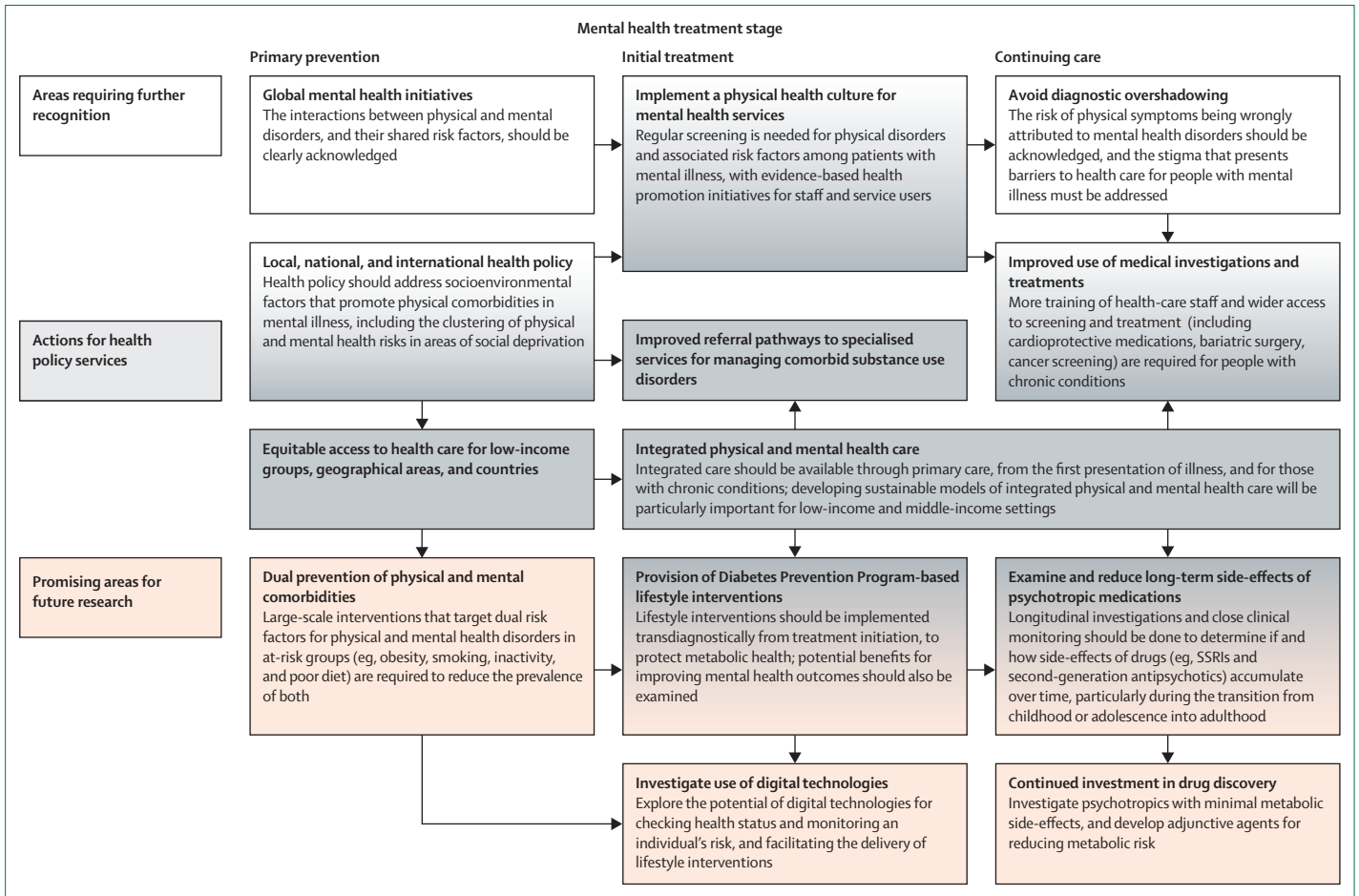
### Introduction

The premature mortality of people with mental illness has been recognised by the medical community for more than half a century.<sup>1,2</sup> Although premature mortality was initially shown in patients with severe mental illnesses such as schizophrenia and bipolar disorder,<sup>3-5</sup> there is now evidence that individuals who have diagnoses across the entire spectrum of mental disorders have a substantially reduced life expectancy compared with the general population.<sup>3-11</sup> Although suicide contributes to a considerable proportion of these premature deaths (with approximately 17% of mortality in people with mental illness attributed to unnatural causes),<sup>12,13</sup> the majority of years of life lost in people with mental illness relate to poor physical health, specifically due to comorbid non-communicable and infectious diseases.<sup>11,14-19</sup> The consequent poor physical health outcomes of people with mental illness have been alluded to as a human rights issue,<sup>20</sup> and the amount of research on this topic has increased substantially over the past two decades (appendix p 2).

Despite the increasing amount of research in this area and more general advancements in health care and medicine, the poor physical health outcomes (and the associated decrease in life expectancy) of people with mental illness have not improved.<sup>3,12,21</sup> In fact, the number of years of life lost due to physical health conditions in people with mental illness might be increasing.<sup>3,21-23</sup> The premature mortality of people with mental illness reflects a large number of health inequalities between people with and without mental illness throughout the life course. Although the psychiatric literature is largely unified on the consensus that physical comorbidities have a life-shortening effect for people with mental illness, the prevalence and specific effects of the physical comorbidities that can potentially affect individuals with diagnoses across the spectrum of mental disorders (not only severe mental illness) have not yet been widely examined.

### Comorbidity of mental and physical diseases: a literature meta-review

To provide an overview of the literature in this field, we systematically identified all systematic reviews and meta-analyses of chronic physical disorders in people with common mental disorders, severe mental illnesses, alcohol and substance use disorders, and various other mental health disorders, published between Jan 1, 2000, and Oct 26, 2018. In particular, we sought to identify the top-tier evidence on the prevalence of chronic conditions in comparison with the general population (generally defined as individuals without mental illness). Further details on our search strategy and selection criteria are in the appendix (pp 2-5). We considered this body of meta-research and key recent reports from health-care and governmental bodies in developing the scope, priorities, and recommendations of this Commission (figure 1).



**Figure 1: Strategies to protect physical health in people with mental illness**

Strategies are applicable from the stage of mental illness indicated, and onwards. White boxes are areas that require further recognition. Grey boxes are actions for health policy and services. Orange boxes are promising areas for future research. Boxes that have a gradient of two colours are included in two of these categories.

As detailed in table 1, since 2000, almost 100 systematic reviews and meta-analyses have been published on the physical health comorbidities associated with mental illness.<sup>14,54–58,77–80,91–95,100</sup> showed clear evidence of an increase in risk of 1.4–2.0 times across all cardiovascular and metabolic diseases examined. Although fewer studies have been done for other mental disorders, the existing reviews of anxiety disorders,<sup>46,76,87,98</sup> substance use disorders,<sup>81,96</sup> attention-deficit hyperactivity disorder,<sup>101</sup> and personality disorders<sup>104</sup> consistently find evidence of poor cardiometabolic health in patients with these diagnoses, with substantially higher rates of obesity, diabetes, and metabolic syndrome than in the general population (appendix pp 6–14). The only inverse relationship that has been identified between cardiometabolic health and mental disorders is the reduced incidence of diabetes in patients with anorexia nervosa (odds ratio [OR] 0.71) compared with those without anorexia nervosa.<sup>82</sup> However, because of the physically damaging behaviours that are inherent to the disorder, individuals with anorexia nervosa are at a much higher risk for other health issues, such as a

population. Similarly, 16 reviews of cardiovascular and metabolic health in patients with severe mental illness

London, UK (F Gaughran MD, T Pillinger MRCP, B Stubbs PhD); **Centre for Global Mental Health** (Prof G Thornicroft PhD) and **Psychosis Studies** (F Gaughran, T Pillinger, B Stubbs), **Institute of Psychiatry, Psychology and Neuroscience**, King's College London, London, UK; **Manchester Academic Health Science Centre, University of Manchester**, Manchester, UK (A Heald); **Department of Diabetes and Endocrinology**, Salford Royal Hospital, Salford, UK (A Heald); **Department of Behavioural Science and Health, University College London**, London, UK (S E Jackson PhD); **Department of Psychiatry, Dalhousie University**, Halifax, NS, Canada (Prof S Kisely); **Greater Manchester Mental Health NHS**

Foundation Trust, Manchester, UK (Prof K Lovell); Department of Psychiatry, University of Campania Luigi Vanvitelli, Naples, Italy (Prof M Maj MD); Discipline of Psychiatry, University of Adelaide, Adelaide, SA, Australia (H Myles MBBS, Prof C Galletly); Medical Research Council London Institute of Medical Sciences, London, UK (T Pillinger); Institute of Clinical Sciences, Faculty of Medicine, Imperial College London, London, UK (T Pillinger); The Melbourne Clinic, Melbourne, VIC, Australia (Prof J Sarris); Department of Sports Methods and Techniques, Federal University of Santa Maria, Santa Maria, Brazil (Prof F B Schuch PhD); Cambridge Centre for Sport and Exercise Sciences, Anglia Ruskin University, Cambridge, UK (L Smith PhD); Neurosciences Department and Padua Neuroscience Centre, University of Padua, Padua, Italy (M Solmi MD); Queensland Centre for Mental Health Research, The Park Centre for Mental Health, Wacol, QLD, Australia (S Suetani); Keeping the Body in Mind Program, South Eastern Sydney Local Health District, Sydney, NSW, Australia (Prof J Curtis, S B Teasdale); Department of Psychiatry, Beth Israel Deaconess Medical Center, Harvard Medical School, Boston, MA, USA (J Torous MD); Department of General Practice, Westmead Clinical School, University of Sydney, Westmead, NSW, Australia (Prof T Usherwood); Department of Rehabilitation Sciences, Katholieke Universiteit Leuven, Leuven, Belgium (Prof D Vancampfort PhD); University Psychiatric Centre, Katholieke Universiteit Leuven, Kortenberg, Belgium (Prof D Vancampfort); National Research Council, Neuroscience Institute, Aging Branch, Padova, Italy (N Veronese MD); and Schizophrenia Research Unit, Ingham Institute of Applied Medical Research, Liverpool, NSW, Australia (Prof P B Ward)

Number of reviews	Common mental disorders (48 reviews)				Severe mental illnesses (30 reviews)			Alcohol and substance use disorders (6 reviews)			Other mental illnesses (8 reviews)				Mixed mental illness (7 reviews)	Total
	Depression	Anxiety	Mixed common mental disorder	Schizophrenia	Bipolar disorder	Mixed severe mental illness	Alcohol use disorder	Substance use disorder	Attention-deficit hyperactivity disorder	Autism spectrum disorder	Eating disorders	Personality disorders				
33	12	15*	3	15*	8	7*	5	1	4	1	2	1	7	99		
<b>Non-communicable diseases</b>																
Asthma	2 reviews <sup>3,4,25</sup>	..	..	1 review <sup>26</sup>	..	..	..	..	1 review <sup>27</sup>	1 review <sup>28</sup>	..	..	..	5		
Autoimmune disorders	..	..	..	1 review <sup>29</sup>	..	..	..	..	..	..	..	..	..	1		
Cardiovascular disease	16 reviews <sup>30-45</sup>	6 reviews <sup>46-51</sup>	2 reviews <sup>52,53</sup>	2 reviews <sup>54,55</sup>	1 review <sup>56</sup>	3 reviews <sup>54,57,58</sup>	..	..	..	..	..	..	..	30		
Cancer	4 reviews <sup>59-62</sup>	..	..	5 reviews <sup>63-67</sup>	..	..	..	..	..	..	..	..	..	10		
Diabetes	7 reviews <sup>69-75</sup>	1 review <sup>6</sup>	..	2 reviews <sup>77,8</sup>	2 reviews <sup>79,80</sup>	1 review <sup>81</sup>	1 review <sup>81</sup>	..	..	1 review <sup>82</sup>	..	..	..	17		
Metabolic syndrome	2 reviews <sup>58,86</sup>	3 reviews <sup>88,89</sup>	1 review <sup>90</sup>	3 reviews <sup>91,92</sup>	3 reviews <sup>93-95</sup>	1 review <sup>96</sup>	1 review <sup>96</sup>	..	..	..	..	..	..	15		
Obesity	..	2 reviews <sup>86,99</sup>	..	..	1 review <sup>100</sup>	..	..	..	3 reviews <sup>101-103</sup>	..	..	1 review <sup>104</sup>	2 reviews <sup>97,105</sup>	9		
Osteoporosis or bone loss	1 review <sup>106</sup>	..	..	1 review <sup>107</sup>	..	..	..	..	..	1 review <sup>108</sup>	..	..	..	3		
Parkinson's disease	1 review <sup>109</sup>	..	..	..	..	..	..	..	..	..	..	..	..	1		
Rheumatoid arthritis	..	..	..	1 review <sup>110</sup>	..	1 review <sup>29</sup>	..	..	..	..	..	..	..	2		
<b>Infectious diseases</b>																
Hepatitis B	..	..	..	..	..	3 reviews <sup>111-113</sup>	..	..	..	..	..	..	..	3		
Hepatitis C	..	..	..	..	..	3 reviews <sup>111-113</sup>	1 review <sup>114</sup>	1 review <sup>115</sup>	..	..	..	..	..	5		
HIV	..	..	..	..	..	3 reviews <sup>111-113</sup>	1 review <sup>116</sup>	..	..	..	..	..	1 review <sup>117</sup>	5		
Syphilis	..	..	..	..	..	1 review <sup>112</sup>	..	..	..	..	..	..	..	1		
Tuberculosis	..	..	..	..	..	..	1 review <sup>118</sup>	..	..	..	..	..	..	1		
Other	..	..	..	2 reviews <sup>119,120</sup>	1 review <sup>65</sup>	1 review <sup>68</sup>	..	..	..	..	..	..	..	4		
Mixed illnesses or comorbidities	..	..	..	..	..	..	..	..	..	..	..	..	..	..		

\*Includes studies that examined several different mental illnesses.

Table 1. Map of systematic reviews and meta-analyses that have examined physical comorbidities across different mental illnesses

	Alcohol	Tobacco use	Physical activity	Sedentary behaviour	Poor diet	Poor sleep
Major depression	SR: around 30% of patients have or have had alcohol use disorder <sup>124</sup>	SR: patients are more likely to smoke and be dependent on nicotine, are less likely to quit, and are more likely to relapse <sup>125</sup>	MA: around 60–70% of patients do not meet physical activity guidelines <sup>126,127</sup>	MA: patients are sedentary for 8.5 h per day <sup>127</sup>	ES: patients have significantly higher food intake and poorer diet quality than the general population <sup>128</sup>	ES: patients have significantly poorer continuity of sleep and reduced sleep depth compared with healthy controls <sup>129</sup>
Anxiety disorders	ES: 17.9% of patients have alcohol dependence or misuse <sup>130</sup>	MA: 41% increase in risk of regular smoking and 58% increase in risk of nicotine dependence <sup>131</sup>	ES: individuals with panic disorders, social phobia, and agoraphobia report significantly less activity <sup>132</sup>	SR: inconsistent evidence for increased sedentary time in people with anxiety <sup>133</sup>	Insufficient evidence	MA: anxiety disorders <sup>129,134</sup> and obsessive-compulsive disorder <sup>135</sup> are associated with reduced sleep quality
Bipolar disorder	MA: 1 in 3 patients have or have had alcohol use disorder <sup>136</sup>	MA: increased rates of current smoking (higher than in patients with major depression but lower than in patients with schizophrenia) <sup>137</sup>	MA: the majority of patients meet physical activity guidelines and are no different to the general population <sup>81,126</sup>	MA: patients are sedentary for more than 10 h per day <sup>81,126</sup>	MA: patients consume around 200 calories more than the general population per day <sup>138</sup>	MA: even between episodes, people with bipolar disorder have increased sleep-wake disturbance, similar to patients with insomnia <sup>139</sup>
Schizophrenia	MA: 1 in 5 patients have or have had alcohol use disorder <sup>140</sup>	MA: significantly higher rates of current smoking, heavy smoking, and nicotine dependence <sup>141</sup>	MA: the majority of patients do not meet physical activity guidelines <sup>108,126</sup>	MA: patients are sedentary for around 11 h per day <sup>142</sup>	MA: patients consume around 400 calories more than the general population per day <sup>138</sup>	MA: patients have significantly reduced sleep time and quality of sleep <sup>129,134</sup>
First-episode psychosis	MA: 27% of patients have or have had alcohol use disorder or alcohol dependence <sup>143</sup>	MA: 58% of patients use tobacco, which is a significantly higher prevalence than in matched controls <sup>144</sup>	MA: patients are less active than individuals with long-term schizophrenia <sup>108</sup>	Insufficient evidence	Insufficient evidence	MA: patients have significantly reduced sleep time and quality of sleep <sup>134</sup>
Post-traumatic stress disorder	SR: increased prevalence of comorbid alcohol misuse (10–61%) compared with the general population <sup>145</sup>	MA: patients are 22% more likely to be current smokers than the general population <sup>98</sup>	MA: patients are 9% less likely to be physically active than the general population <sup>98</sup>	Insufficient evidence	MA: patients are 5% less likely to have a healthy diet than the general population <sup>98</sup>	MA: significantly poorer continuity of sleep and reduced sleep depth compared with healthy controls <sup>129</sup>

Results described as significant had  $p < 0.05$ . Comparisons are with the general population unless otherwise stated. SR=systematic review of case-control, clinical, or epidemiological research. MA=meta-analysis of multinational data. ES=large-scale epidemiological studies.

Table 2: Prevalence of behavioural risk factors across different mental health diagnoses

12 times greater incidence of osteoporosis,<sup>108</sup> and one of the highest rates of premature mortality across all mental disorders (all-cause standardised mortality ratio 5.9, 95% CI 4.2–8.3).<sup>12</sup> Furthermore, individuals with other eating disorders, such as bulimia, have a much higher risk of diabetes (OR 3.45) than people without eating disorders.<sup>82</sup>

The relationship between mental illnesses and cancer risk is uncertain. Although some reviews have found that mental illnesses are associated with a small increase in overall cancer risk,<sup>59</sup> other reviews have found no relationship, or a decreased cancer risk.<sup>63,68</sup> The risk of cancer associated with mental illness might vary for different cancer types. For instance, whereas patients with common or severe mental illnesses have an increased risk of lung cancer, the risk of colorectal cancer appears to be similar to (or even lower than) that in the general population.<sup>59,63</sup> Further research is required to understand these relationships, but a possible explanation is that people with mental illness have a reduced life expectancy, resulting in a reduced lifetime rate of cancer in this group. Another area requiring further investigation is the relationship between psychiatric and neurological disorders, because the tendency to separate these two types of illness into different categories, despite their overlapping characteristics, could result in underestimations of the

true burden of mental illness on a global level.<sup>122</sup> A recent meta-analysis has shown that for people with depression, the risk of developing Parkinson’s disease is doubled compared with people without depression,<sup>109</sup> but the relationships between other psychiatric and neurological disorders have yet to be established.

**Gaps in the meta-research**

Our meta-research showed an absence of meta-analyses on chronic obstructive pulmonary disease (COPD) in people with mental disorders, although individual health database studies<sup>19,123</sup> have found an increased prevalence of COPD in people with severe mental illness.

The harmful effects of infectious diseases on the physical health of people with mental disorders might also be underestimated, because they have largely been unexplored in mental health disorders other than severe mental illnesses (table 2). The reviews that we identified on infectious diseases in populations with severe mental illness found that the average prevalence (across multiple countries) for hepatitis B infection, hepatitis C infection, and HIV was 15.63%, 7.21%, and 7.59%, respectively,<sup>111</sup> and the prevalence of syphilis was 1.1–7.6%.<sup>112</sup> Within specific settings or countries, prevalence data highlight that individuals with mental illness have an increased risk of infectious disease compared with the general population.

Correspondence to: Dr Joseph Firth, NICM Health Research Institute, Western Sydney University, Westmead, NSW 2145, Australia [j.firth@westernsydney.edu.au](mailto:j.firth@westernsydney.edu.au)  
See Online for appendix

For instance, in the USA, the prevalence of both hepatitis B and hepatitis C infections in patients with severe mental illness is around 20%, whereas the prevalence of these infectious diseases in the US population is estimated to be 0.3% and 1.0%, respectively.<sup>146,147</sup> Similarly, the median prevalence of HIV among people with severe mental illness in the USA is 1.8%, which is almost four times greater than the general US population.<sup>146</sup> In low-income and middle-income settings, infectious diseases are a major cause of mortality in people with severe mental illness. For example, in a 10-year follow-up study in Ethiopia,<sup>148</sup> individuals with severe mental illness died 30 years prematurely compared with the general population, and half of the deaths among individuals with severe mental illness were from infectious diseases. Further scientific and governmental attention is required for infectious diseases among people with mental illness in low-income and middle-income settings, particularly given that rates of infection are highest in these settings, and inequalities between people with and without mental illness are most pronounced.<sup>149</sup> Furthermore, despite the compelling evidence for increased risk of infectious diseases in adults with severe mental illness, the prevalence of infectious diseases in other mental disorders, and the extent to which this increased risk applies to young people with mental illness, is not well established. Future research should also aim to identify the underlying factors resulting in an increased rate of infectious diseases among people with mental illnesses so that more appropriate and targeted solutions can be developed (as discussed in Part 2).

Much of the published literature assessing physical health in mental illness to date has examined the prevalence of specific health outcomes or disorders in isolation. The prevalence and specific effects of physical multimorbidity (ie, the presence of more than one chronic physical disorder) in people with mental illness are not fully understood. Some large-scale, multinational studies have shown that people with severe mental illness,<sup>123,150</sup> common mental disorders,<sup>151,152</sup> and substance use disorders<sup>18,153</sup> are at a greatly increased risk of physical multimorbidity from the point of onset of the mental illness.<sup>154</sup> The average age of onset of multimorbidity is younger in people with mental illness compared with the general population.<sup>123,154</sup> Multimorbidity greatly increases the personal and economic burden associated with chronic conditions, and reduces life expectancy compared with a single morbidity.<sup>155,156</sup> Urgent attention is required to address the onset and accumulation of physical multimorbidity, particularly in low-income and middle-income settings, where physical multimorbidity is increased among people with mental illness compared with the general population,<sup>81,83,151</sup> but services do not have the resources to deal with the burden and complexity of these cases. Additionally, the development of cost-effective approaches that address the root causes of multimorbidity is needed to prevent long-term disability in people with mental illness.

### Further considerations

Although the impact of physical comorbidities on the life expectancy of individuals with mental illnesses is well established,<sup>13,14</sup> further research is needed to examine whether the psychological distress associated with mental illness is compounded by the additional burden of these chronic conditions. For instance, in the general population, diabetes is commonly associated with distress, which can have a considerable effect on the person's quality of life and their ability to manage their overall health.<sup>157</sup> Diabetes-related distress also affects people with common mental disorders,<sup>157</sup> severe mental illness,<sup>158</sup> and substance use disorders.<sup>159</sup> The prevalence of obesity is considerably increased across most classes of mental disorder compared with the general population (appendix pp 6–14). Weight gain can be distressing and negatively affect an individual's quality of life and self-esteem, and might impede treatment-seeking behaviour because an individual is concerned about further weight gain.<sup>160</sup> Similarly, obesity can perpetuate lifestyle behaviours, such as social withdrawal<sup>161</sup> and sedentary behaviour,<sup>126</sup> that are characteristic of many mental disorders, and are also key risk factors for poor cardiometabolic health.<sup>162</sup> Emerging evidence suggests that obesity and metabolic syndrome are independent predictors of relapse and rehospitalisation for those with severe mental illness.<sup>163,164</sup> This relationship could be explained by the inflammatory effects of abdominal obesity; inflammation has also been associated with worse mental health<sup>165</sup> and increased suicidality.<sup>166</sup> In addition to the personal burden, physical comorbidities in people with mental illness result in an increased financial cost, the extent of which requires further research (panel 1).

To address physical health inequalities in people with mental illness compared with those without mental illness, we must focus on both reducing the prevalence of chronic health conditions, and lessening their effects across the life course. In particular, cardiometabolic diseases are a relevant and transdiagnostic target for improving physical health outcomes across a broad spectrum of mental illnesses. Although schizophrenia is typically associated with the greatest degree of cardiovascular risk (partly due to the side-effects of drugs for psychosis), there is compelling evidence that the risk of obesity, metabolic syndrome, diabetes, and cardiometabolic disease is similarly increased in other mental disorders, including common mental disorders.<sup>46,76,83,85,87,97,98,175–177</sup> Given the high prevalence of these mental disorders, developing strategies for improving health outcomes that can be applied across many different mental health diagnoses (including severe mental illness) could considerably reduce premature mortality and the lifelong burden of poor physical health for people with mental illness. The effects and prevalence of other non-communicable diseases and infectious diseases in low-income, middle-income, and high-income countries cannot be neglected. As such, understanding the epidemiology of mental and physical comorbidities in low-income and middle-income countries,<sup>178</sup> and

developing evidence-based interventions that integrate mental and physical health care in these settings,<sup>179</sup> is increasingly recognised as a major research priority for global health. The following parts of the Commission discuss key modifiable factors that drive mental and physical health comorbidities, describe strategies for improving the management and prevention of these conditions, and present directions for both immediate clinical action and future research to reduce physical health inequalities for people with mental illness (figure 1).

## Part 2: Key modifiable factors in health-related behaviours and health services

### Introduction

Part 1 identified cardiometabolic diseases as a category of physical comorbidities that is particularly pervasive and has profound effects on patient wellbeing, morbidity, and mortality, across many mental disorder diagnoses.<sup>46,76,81,83,85,87,96–98,157–159,175–177,180</sup> In addition to the side-effects of psychotropic medications (described in Part 3), the reasons for increased cardiometabolic morbidity and mortality in people with mental illness can be separated into patient-related factors and provider-level or system-level factors.<sup>121</sup>

Lifestyle risk factors, such as smoking, poor diet, and inactivity, are modifiable, patient-related factors that are known to be associated with cardiometabolic disease,<sup>108,128,138,141</sup> as well as affecting many other aspects of physical health.<sup>46,76,81,83,85,87,96–98,175–177</sup> However, the extent to which lifestyle risk factors in patients with various mental disorders differ from the general population is not fully established. As a result, current lifestyle interventions for people with mental illness could be imprecise, or could focus too much on one behavioural modification at the expense of other important risk factors (eg, increasing physical exercise without considering the impact of diet, or focusing on smoking over alcohol intake).

We applied a systematic hierarchical approach (appendix pp 15, 16) to identify top-tier evidence on lifestyle risk factors for non-communicable diseases in people with mental illness. We focused on behavioural risk factors in affective and psychotic disorders, rather than on mental health illnesses that are characterised by physically damaging behaviours, such as eating disorders and substance or alcohol use disorders (in which the greatest behavioural risks to physical health are the behaviours that define the conditions). Table 2 summarises findings from meta-analyses, systematic reviews, and population-scale studies, published since 2000, on lifestyle risk factors in various mental health populations.

### Lifestyle risk factors across various diagnoses

Although the initial aim of our hierarchical evidence synthesis was to determine key lifestyle risk factors that are associated with individual mental disorders, most of

### Panel 1: Adding up the costs of physical comorbidities in people with mental illness

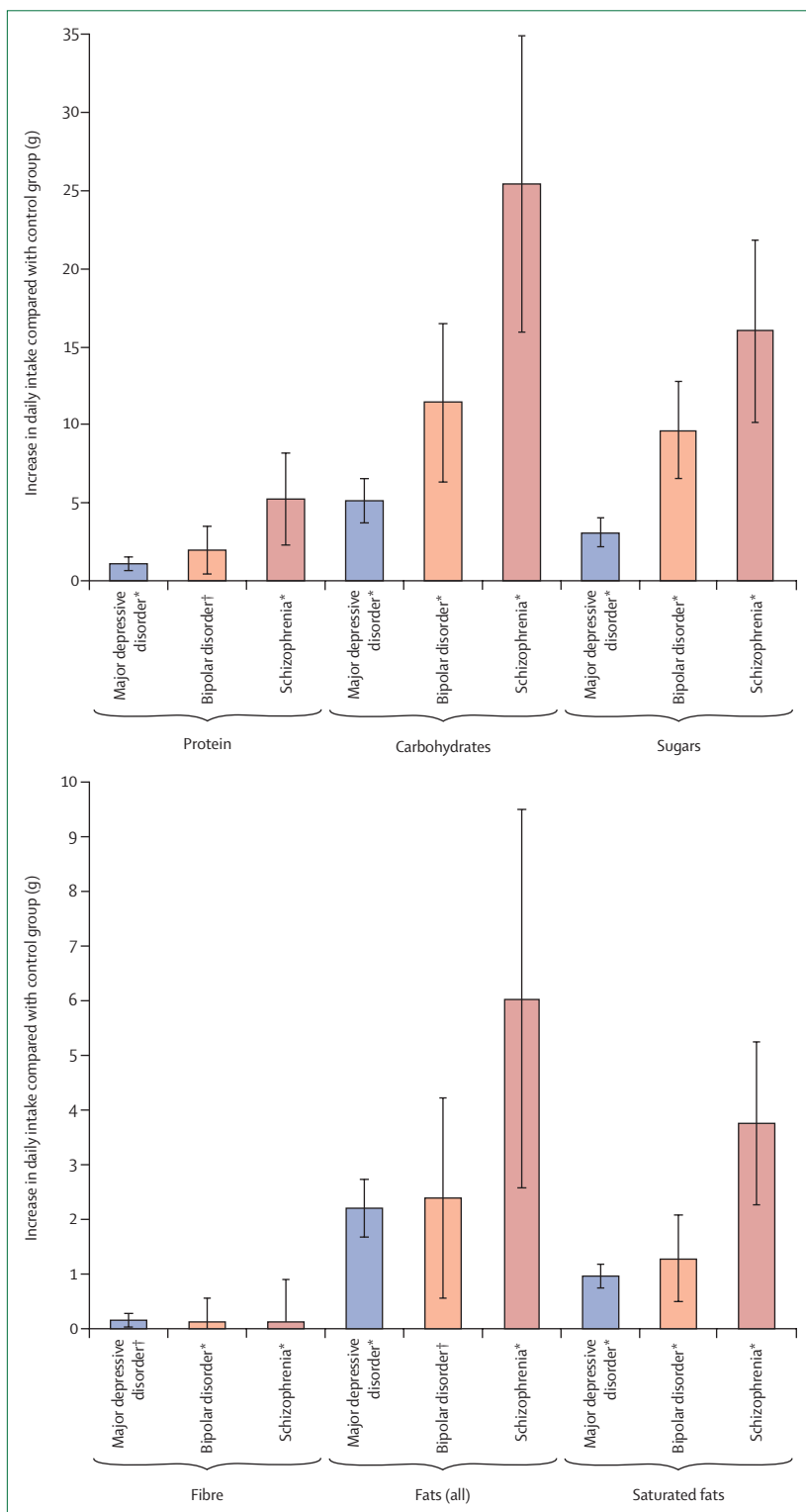
Cost-of-illness studies, which assess the economic burden of a diagnosis or group of diagnoses, have found that people with combined physical and psychiatric comorbidity have higher hospital costs, increased readmission rates, and higher total health sector costs compared with people without psychiatric diagnoses.<sup>163,167–171</sup>

Although cost-of-illness studies are important for describing economic burden, only economic evaluations can estimate the cost-effectiveness of interventions to support decision making on the investment of limited health-care (and other sector) resources. Economic evaluations are used to assess pharmaceuticals and health technologies in many countries. Evidence regarding the cost-effectiveness of referral programmes and lifestyle interventions for people with mental illness and increased cardiovascular disease risk factors is mostly positive, but little evidence is available.<sup>172–174</sup> Further economic evaluations that collect cost and outcome data, and that are done alongside clinical trials, will be needed to provide convincing evidence of the economic benefits of these programmes in people with mental health diagnoses.

Challenges to trial-based economic evaluations include excessive respondent burden and respondent bias in collecting cost information, although these might be overcome by using administrative data systems. Fragmentation of information and poor availability of data for some populations present additional challenges. Trial-based evaluations, which often use intermediate efficacy endpoints (eg, LDL cholesterol levels), will be an important source of data for modelled economic evaluations. Modelled evaluations will be crucial to establish the long-term cost-savings and improvements in outcomes (eg, quality of life and mortality) through the avoidance of future health consequences, such as metabolic syndrome and cardiovascular disease events. As this area of research develops, both trial-based and modelled economic evaluations will need to adhere to published methodology standards, including presenting health-care and societal perspectives to assist policy makers.

the published literature showed that all psychiatric diagnoses are associated with a wide spectrum of lifestyle risk factors (table 2). People with mental illness tend to have more unhealthy lifestyles compared with the general population, and among people with mental illness, those with schizophrenia have a particularly high risk of smoking, sedentary behaviour, and poor diet.<sup>128,137,138</sup> Socioeconomic factors could partly mediate this trend, because the incidence of schizophrenia is higher in low-income communities,<sup>181</sup> and such communities also have higher rates of behavioural risk factors compared with high-income communities.<sup>182</sup> However, lifestyle risk factors are still greater in patients with schizophrenia than those with other mental health disorders, even when controlling for socioeconomic factors. For instance, a





**Figure 2: Dietary intake by food group in patients with major depressive disorder (n=14 619), bipolar disorder (n=952), and schizophrenia (n=262)**  
 Bar heights represent the age-adjusted and sex-adjusted mean differences. Error bars represent 95% CIs of adjusted means. Data are based on the UK Biobank study and reproduced from Firth and colleagues.<sup>128</sup> \*p<0.05 compared with healthy controls. †p<0.001 compared with healthy controls.

population-scale study from 2018 that used data from the UK Biobank<sup>128</sup> found that individuals with severe mental illness ate more obesogenic food than the general population, particularly those with schizophrenia (figure 2), and the differences in diet persisted after adjusting for social deprivation and education.<sup>128</sup> The use of second-generation antipsychotics (SGAs) could contribute to changes in diet, because trials in healthy volunteers found that SGAs such as olanzapine can reduce satiety, increase appetite<sup>183</sup> and lethargy, and have sedative effects.<sup>184–186</sup> Although some SGAs, such as olanzapine, have the most obvious cardiometabolic side-effects, other more widely prescribed psychotropic medications also have cardiometabolic side-effects that accumulate over time. Thus, early intervention strategies for managing lifestyle and cardiometabolic risk for patients treated with psychotropic medications are important for preventing cardiometabolic diseases from arising (panel 2) The side-effects of SGAs and other psychotropic medications (such as drugs for depression) are discussed further in Part 3.

#### Lifestyle risk factors in low-income and middle-income settings

Although most of the data presented in table 2 are from high-income countries, similar trends have been found in low-income and middle-income countries.<sup>137,141,194–199</sup> For instance, data from the WHO Study on Global Ageing and Adult Health and the WHO World Health Survey show that individuals with depression in low-income and middle-income countries are more likely to smoke (OR 1.41),<sup>194</sup> to not meet physical activity guidelines (OR 1.42),<sup>195</sup> and to have sedentary behaviour for 8 h or more per day (OR 1.94)<sup>196</sup> than individuals without depression. Similarly, low levels of physical activity are found in individuals with anxiety and psychotic disorders in low-income and middle-income countries.<sup>137,141,197–199</sup> Despite the differences in sociocultural factors in low-income and middle-income countries compared with high-income countries, people with mental illness in both settings have more lifestyle risk factors compared with the general population. In low-income and middle-income countries, there are new challenges to maintaining a healthy lifestyle caused by the spread of fast-food restaurants, new technologies that allow for reduced physical inactivity, and tobacco promotion and legislation.<sup>200–202</sup> Because lifestyle risk factors, such as physical inactivity and poor diet, are elevated in people with mental illness (table 2), further efforts are needed to develop lifestyle interventions that address these factors appropriately for those with mental illness living in low-income and middle-income settings (see Part 5).

In addition to non-communicable diseases, other behavioural risk factors, such as intravenous drug use and high-risk sexual behaviours, are also over-represented in people with severe mental illness in low-income, middle-income, and high-income settings (see Part 1),

and can lead to infectious disease. Most available data are for adults with severe mental illness, so the prevalence in other age groups and for other diagnoses might be underestimated. For instance, a recent meta-analysis<sup>203</sup> of 3029 adolescents with a range of psychiatric diagnoses showed a 15% (95% CI 3–50) lifetime prevalence of sexually transmitted illnesses, and found that 40% (95% CI 23–78) of the adolescents had shown high-risk sexual behaviour during their most recent sexual encounter. Furthermore, recent alcohol use increased the likelihood of having unprotected sex (OR 1.66, 95% CI 1.09–2.52).<sup>203</sup> The interactions between risk factors for non-communicable diseases and infectious diseases should not be overlooked, and suggest that screening for multiple lifestyle factors, rather than single factors or biological markers alone, will be the most efficient method for improving health outcomes for people with mental illness.

### Interventions for multiple lifestyle risk factors in mental illness

In summary, although our evidence synthesis process aimed to identify key behavioural risk factors for specific mental disorders, the evidence suggests that simultaneously considering multiple lifestyle factors is more appropriate in understanding and managing risk factors across all mental health diagnoses. However, such transdiagnostic, multifactorial approaches are not widely reflected in the published literature, which generally focuses on specific factors for individual disorders. Furthermore, no suitable tools are available for clinicians to comprehensively assess lifestyle factors as part of standard care. The sole use of biological markers for physical health assessment (such as >7% increase in bodyweight, high blood pressure, and an abnormal lipid profile) could mean that interventions are applied only when it is too late to protect metabolic health or pre-empt obesity (panel 2). Clinical guidelines are increasingly recommending that assessments of diet, physical activity, and health risk behaviours are done alongside assessments of anthropomorphic parameters and blood markers of metabolic status,<sup>204</sup> to more accurately assess current physical health and future risk.

To comprehensively promote the physical health of people with mental illness, a positive first step would be developing quick and widely applicable tools for lifestyle screening. These tools could be used across different diagnoses, settings, and services, to assess a range of behavioural risk factors (eg, exercise, diet, substance use, and sleep) at once, and thus identify key drivers of poor physical health on a case-by-case basis. A comprehensive lifestyle assessment would give patients more actionable physical health information than that which is typically provided from screening for biological markers, because patients will be informed of specific lifestyle changes they could make to protect their physical health. Self-report questionnaires are often burdensome and

### Panel 2: Why wait for weight? Tipping the scales towards prevention

Clinical guidelines for metabolic screening upon initiation or continuation of second-generation antipsychotics recommend that blood pressure, body-mass index, blood glucose, and lipid profile should be checked at least every 6 months.<sup>187–189</sup> This is a positive example of considering physical health outcomes for people with severe mental illness. However, a large body of research in the general population has shown that preventing conditions such as obesity and metabolic syndrome from arising is considerably more efficient than attempting to reverse their long-term consequences.<sup>190</sup> Thus, proactive lifestyle interventions in mental illness might not have their maximal effect if the interventions are only provided after large changes in biological or clinical markers of adverse metabolic health are found during screening.

Individuals with first-episode psychosis are at considerable lifestyle risk from illness onset (table 2), because they tend to be less physically active and have a higher rate of alcohol use disorders than those with long-term schizophrenia, and also have nutrient deficits and a high rate of smoking (around 60% for both first-episode psychosis and schizophrenia, which is much higher than in the general population). Many other behavioural risk factors also seem to precede, rather than accompany, the onset of psychotic disorders,<sup>191</sup> and metabolic disturbance might be present from illness onset.<sup>192</sup>

Although treatment with second-generation antipsychotics (SGAs) can be important for stabilising mental health, taking these drugs can further increase metabolic risk (see Part 3). Given the high likelihood of physical health deterioration while taking SGAs, clinicians who prescribe them to patients have a duty of care to ensure that the patients are given access to evidence-based lifestyle interventions (as detailed in Part 4) from the start of treatment. Lifestyle interventions should be made available even to those with intact metabolic health. Although health screening should continue, more timely and effective strategies for improving health outcomes will require intervening on the basis of lifestyle plus pharmacological risk, rather than waiting for visible weight gain or metabolic dysfunction to happen.<sup>193</sup>

inaccurate, reducing their suitability for capturing lifestyle factors in people with mental illness.<sup>205</sup> Thus, a priority for future research is to examine if digital technologies (including smartphones and wearable technologies) could provide feasible and accurate methods of broad lifestyle assessment.<sup>205,206</sup>

In addition, more efficient care pathways are needed to help people with mental illness minimise behavioural risk factors (see Part 4). For instance, multidisciplinary referral pathways (available through both primary and secondary care) could provide access to specialised physical activity, smoking cessation, dietetics, and other allied health services, depending on the individual's specific behavioural profile and health goals. The dissemination of risk behaviour interventions in low-income and middle-income countries is an urgent challenge, because individuals with mental illness in these countries are disproportionately affected by an increased risk for infectious diseases and non-communicable diseases.

### Health provider-level and system-level factors

Lifestyle-related factors are unlikely to be the only explanations for poor physical health outcomes in people with mental illness.<sup>121</sup> For severe mental illness

in particular, mortality remains high even after adjusting for behavioural risk factors such as smoking, physical activity, and body-mass index.<sup>207</sup> Increasingly, evidence suggests that the poor physical health outcomes of people with mental illness are partly driven by differences in the availability and quality of health care that they receive. For instance, people with severe mental illness are less able to access adequate health care than the general population. In the USA, people with severe mental illness are twice as likely as those without mental disorders to have been denied medical insurance because of a pre-existing condition.<sup>208</sup> These disparities exist at all levels of health services. In primary care, people with severe mental illness are less likely to have a physical examination (eg, weight and blood pressure),<sup>209</sup> or to be assessed and treated for hyperlipidaemia, than people without mental illness.<sup>210,211</sup> People with mental illness also have more emergency department visits and more avoidable admissions to hospital for physical conditions that with appropriate primary care should not require inpatient treatment.<sup>212</sup> Patients with a range of psychiatric diagnoses, including depression, anxiety, substance use disorder, and severe mental illness, have reduced access to oral health care.<sup>213,214</sup>

In secondary health services, physical health might also be poorly managed for people with mental illness.<sup>215</sup> In particular, people with mental illness are less likely to receive medical or surgical interventions that are commonly given in the general population. For example, people who have had prior contact with mental health services are less likely to receive cardiac catheterisations and coronary artery bypass grafting than people who have no prior contact, which contributes to the higher mortality for circulatory disease among people with a history of mental illness.<sup>216–218</sup> People with mental illness are also less likely to receive appropriate medications, such as  $\beta$  blockers and statins, at discharge after myocardial infarction.<sup>219</sup> The incidence of many cancer types (including common types, such as breast, colorectal, and prostate cancer and melanoma) among patients with psychiatric illness is only slightly higher than that of the general population (see Part 1), but mortality is markedly higher.<sup>220,221</sup> Disparities at the health-service level are thought to be responsible for increased cancer mortality, because people with mental illness are less likely to be offered cancer screening,<sup>222</sup> have a reduced likelihood of surgery for all types of cancer, and wait longer for surgery.<sup>223</sup>

A possible explanation for disparities in care for people with mental illness is that clinicians attribute emerging somatic symptoms to the patient's underlying psychiatric disorder, resulting in missed diagnoses (sometimes known as diagnostic overshadowing).<sup>224,225</sup> In addition, people with mental illness can have difficulties with reporting medical problems, distinguishing physical symptoms from the symptoms of mental illness, and

engaging with health services (ie, attending follow-up appointments), particularly if the services are non-inclusive, or perceived as non-inclusive, of people with mental illness.<sup>224,226</sup>

Physicians might be reluctant to offer some medical procedures to people with mental illness because of the ensuing psychological stress, difficulties with obtaining informed consent or compliance with postoperative care, or contraindications, such as substance misuse and smoking.<sup>226</sup> However, contraindications to specialised interventions, such as smoking or problems with informed consent, are not relevant to the prescription of vascular drugs, such as angiotensin-converting enzyme inhibitors,  $\beta$  blockers, or statins, that are known to reduce morbidity and mortality.<sup>227</sup> Furthermore, people with schizophrenia are as adherent to diabetes medication as the general population.<sup>228</sup> Access to secondary health care for people with mental illness might be restricted by financial costs, fragmentation of care, and social stigma.<sup>224,226,229</sup> Although health-care providers should recognise that challenging behaviour can be a symptom of illness, evidence shows that some health-care providers have stigmatised views towards people with mental illness.<sup>224,225</sup> Nonetheless, health services should routinely offer health screening and lifestyle interventions for people with psychiatric disorders, in the same way as for patients with chronic physical conditions.<sup>230</sup>

In conclusion, people with mental illness are likely to receive a poorer standard of health care compared with people without mental illness who have the same physical health problems. To address this discrepancy, changes need to be made in the training of health providers and to the overall health system (see Part 5). Greater integration of physical and mental health care in primary care settings is a key recommendation for improving the management of physical comorbidities in people with mental illness. Mental health clinicians should be wary of attributing emerging somatic symptoms solely to an underlying mental illness, and refresher training on the detection, management, and prevention of chronic medical conditions needs to be available to mental health staff.<sup>229</sup> Furthermore, developing clinical tools for comprehensive lifestyle assessment, and improving referral pathways to targeted interventions, will enable practitioners to identify and manage cardiometabolic risk factors in a timely manner. At the service level, screening procedures need to be improved to support prevention initiatives, alongside investment in the integration of physical health within mental health services, and vice versa.

### Part 3: Interplay between psychiatric medications and physical health

#### Introduction

As discussed in Part 1, a broad range of psychiatric diagnoses are associated with high comorbidity for physical conditions (particularly cardiometabolic diseases).

Although lifestyle risk factors for chronic illness seem to be consistent across a wide range of mental illnesses (Part 2), the physical health risks associated with individual mental health diagnoses are modified by the types of psychotropic medications that are given to treat each condition. In this section, we present research on the interactions between psychotropic medications and physical health, and discuss pharmacological strategies for managing the physical health risks associated with mental illness and avoiding psychotropic adverse drug reactions (ADRs).

### ADRs associated with psychotropic medications

Antipsychotic medications are a key component of treatment for psychotic disorders, because they reduce acute symptoms,<sup>231</sup> and reduce the risk of relapses,<sup>232</sup> emergency hospital admissions,<sup>233</sup> rehospitalisation,<sup>234,235</sup> and mortality.<sup>21,236</sup> Antipsychotic medications are also used for bipolar affective disorder.<sup>237,238</sup> However, the long-term effects of ADRs related to physical health are a major concern, and can be broadly divided into the following categories: cardiometabolic, endocrine, neuromotor, and other ADRs. The ADRs associated with specific antipsychotics are described in the appendix (p 17).

#### Cardiometabolic ADRs

Weight gain is an important ADR because it mediates other cardiometabolic outcomes, such as type 2 diabetes and cardiovascular diseases. Weight gain is the most distressing side-effect reported by callers to mental health helplines,<sup>188</sup> and is associated with poorer quality of life<sup>239–241</sup> and barriers to social engagement.<sup>242</sup> As a result, patients who gain weight have a reduced adherence to treatment, which can lead to relapse and poor mental health outcomes.<sup>163,164</sup> Although most antipsychotic medications lead to weight gain, clozapine and olanzapine have the highest propensity, and haloperidol, lurasidone, and ziprasidone have the lowest propensity.<sup>243,244</sup> Weight gain pathways induced by antipsychotic medication include those involving histamine H1 receptors, D2 dopamine receptors, blockade of 5-hydroxytryptamine receptor 2C, and dysregulation of glucagon-like peptide-1.<sup>243,245</sup> Meta-analyses (table 1) have found that the risk of metabolic syndrome and type 2 diabetes is at least twice as high in people with schizophrenia, bipolar affective disorder, and major depressive disorder compared with the general population (appendix pp 6–13).

#### Endocrine ADRs

Antipsychotic-induced hyperprolactinaemia is the most common endocrine ADR.<sup>246</sup> Antipsychotic medications block dopamine in the tuberoinfundibular pathway, leading to reduced inhibition of prolactin synthesis and secretion. Hyperprolactinaemia is most commonly found with first-generation antipsychotics, as well as risperidone, paliperidone, and amisulpride.<sup>247</sup> Hyperprolactinaemia can be asymptomatic, or can lead to complications, such as

menstrual disturbance and sexual dysfunction (including reduced libido, erectile dysfunction, vaginal dryness, and orgasmic dysfunction<sup>248</sup>) in the short-term,<sup>247</sup> and osteopenia in the long-term.<sup>249</sup>

#### Neuromotor ADRs

Extrapyramidal side-effects are the most common neuromotor ADRs of antipsychotics. These side-effects can be socially stigmatising and are associated with poor quality of life, treatment dissatisfaction, and non-adherence to treatment.<sup>239,240</sup> Extrapyramidal side-effects include dystonia (muscle spasm), Parkinsonism (tremor, rigidity, and bradykinesia), akathisia (subjective restlessness), and tardive dyskinesia (abnormal involuntary movements). The detailed mechanisms of these side-effects are unknown, but they are likely to be related to blockade of dopamine receptors in the nigrostriatal pathway.<sup>250</sup> The annual incidence of tardive dyskinesia is lower among patients taking SGAs compared with those taking first-generation antipsychotic medications.<sup>251</sup> Neuroleptic malignant syndrome is a rare but serious condition (incidence of one to two cases per 10000 people per year) that can be life-threatening.<sup>252</sup> It is characterised by fever, severe rigidity, autonomic disturbances, and confusion.<sup>252</sup> The incidence of neuroleptic malignant syndrome has reduced since SGAs became more widely used.<sup>252</sup>

#### Other ADRs

Antipsychotics are associated with varying degrees of cardiac conduction delay, indicated by a prolonged QTc interval, that can predispose the patient to torsade de pointes and lead to sudden death.<sup>253</sup> Therefore, cardiac conduction should be monitored in patients at risk.

Anticholinergic effects are common side-effects of antipsychotic medications, particularly chlorpromazine, clozapine, and olanzapine.<sup>254</sup> Anticholinergic effects are mediated by antagonism of acetylcholine by inhibition of the muscarinic receptors. They can be either central (eg, impairment of cognition, memory, and concentration, and sedation) or peripheral (eg, constipation, dry eyes, mouth, and skin, blurred vision, tachycardia, and urinary retention). These effects are particularly burdensome in the older population and can have cumulative effects when multiple anticholinergic agents are used.<sup>254</sup>

Somnolence, sedation, and hypersomnia are also common side-effects of antipsychotics.<sup>244</sup> Although sedation might have short-term benefits for an acutely exacerbated or agitated patient, in the long term, somnolence and sedation can affect physical activity, bodyweight, concentration, and the ability to participate in daily activities or psychosocial rehabilitation, and could lead to medication non-adherence.<sup>239</sup>

Most antipsychotic medications can reduce the seizure threshold. The greatest dose-related risk for seizures is associated with clozapine.<sup>253</sup>

### Clozapine

Clozapine is the only approved antipsychotic medication for people with treatment-resistant schizophrenia.<sup>255</sup> It is the most effective antipsychotic medication for reducing positive symptoms<sup>256</sup> and hospitalisations.<sup>257</sup> However, clozapine is associated with severe neutropenia (agranulocytosis; incidence 0.9%; 95% CI 0.7–1.1), usually in the first month after commencement, that can rarely cause death (0.013%; 0.010–0.017).<sup>258</sup> Cardiac ADRs can be life-threatening and include myocarditis (incidence of 0.03–1.00%, usually within the first month)<sup>259,260</sup> and cardiomyopathy (incidence of 0.06–0.12%, usually after the first year).<sup>259,261</sup> Other ADRs of clozapine include weight gain, type 2 diabetes, sedation, sialorrhoea, constipation, tachycardia, postural hypotension, gastro-oesophageal reflux, nocturnal enuresis, seizures, and obsessive-compulsive symptoms.<sup>262</sup>

### Mood stabilisers

Mood stabilisers are prescribed for bipolar affective disorder<sup>263</sup> and adjunctively for refractory schizophrenia.<sup>264,265</sup> Individuals who are prescribed lithium have a mean weight gain of 4 kg over 2 years.<sup>266</sup> Lithium is also associated with thyroid disease,<sup>267</sup> including development of goitre (in up to 50% of patients<sup>268</sup>), hypothyroidism,<sup>269</sup> or hyperthyroidism.<sup>270</sup> Lithium is also associated with polydipsia, polyuria, diabetes insipidus, and other forms of renal dysfunction.<sup>269</sup> Sodium valproate is associated with metabolic effects, with at least half of individuals gaining weight in the first 3 months after initiation,<sup>271</sup> with a mean weight gain of 6.4 kg over 3 months.<sup>272</sup> It is also associated with insulin resistance, which increases the risk of developing type 2 diabetes.<sup>273</sup>

Antipsychotic medications are often prescribed concurrently with mood stabilisers; additional caution is required in this situation because the metabolic effects of the two classes of medication could be additive.<sup>93</sup> Although lithium and sodium valproate are the two most widely prescribed mood stabilisers, other mood stabilisers have a lower propensity for weight gain (eg, carbamazepine)<sup>271</sup> or have no effect on weight (eg, lamotrigine).<sup>274</sup> All mood stabilisers are associated with teratogenic effects and should be avoided in pregnancy and lactation (appendix p 18).

### Drugs for depression

Common ADRs with newer-generation drugs for depression include headache, nausea, agitation, sedation, dizziness, sexual dysfunction, hyponatraemia, weight gain, and metabolic abnormalities.<sup>275</sup> Gastrointestinal side-effects, headache, and sexual side-effects are associated with all proserotonergic drugs for depression, whereas sedation, weight gain, and metabolic effects vary across agents. Antihistaminergic agents (eg, mirtazapine) are more associated with cardiometabolic effects and sedation. Less commonly, drugs for depression can have cardiac (eg, arrhythmias), neurological (eg, seizures), and

hepatic ADRs.<sup>275</sup> Treatment with tricyclic antidepressants is associated with anticholinergic effects, including dry mouth, sedation, blurred vision, constipation, and urinary retention, as well as increased appetite, weight gain, and hyponatraemia (especially in older patients).<sup>276</sup> Furthermore, tricyclic antidepressants are associated with a risk of orthostatic hypotension and falls.<sup>277</sup> They also have a known arrhythmogenic effect; electrocardiogram (ECG) changes can include prolongation of PR interval, QRS interval, and PT (appendix p 19).

### Pharmacological management of ADRs and physical health comorbidities

For the physical health comorbidities associated with serious mental illness that are also commonly seen in the general population (eg, cardiovascular disease), national and international prescribing guidelines developed for the general population should be followed. By contrast, conditions that are secondary to psychiatric pharmacological treatment (eg, extrapyramidal side-effects) require a specialised approach. Close monitoring of physical health parameters is required for people taking antipsychotic medications, and evidence-based pharmacological treatments are needed.<sup>278</sup> If it is safe and feasible, modifying psychiatric medications that are associated with an ADR (eg, by reducing doses or switching medications) should be considered, in consultation with the patient. Here, we provide a targeted, evidence-based approach to addressing commonly observed physical health ADRs in patients with severe mental illness.

#### Type 2 diabetes

Pharmacological management of type 2 diabetes for patients with severe mental illness should follow guidelines for the general population (appendix p 20). The first-line pharmacological therapy is metformin monotherapy, and second-line therapies are listed in the appendix (p 20). The relative risks and benefits of different type 2 diabetes treatments for patients with severe mental illness are presented in table 3. Metformin reduces the risk of transition from prediabetes to type 2 diabetes,<sup>283,284</sup> and should be considered for individuals with severe mental illness and prediabetes. Glucagon-like peptide 1 receptor agonists also reduce the transition from prediabetes or non-diabetes to type 2 diabetes, as well as leading to clinically significant weight loss.<sup>282</sup>

#### Weight gain

When behavioural interventions are ineffective, pharmacological methods for attenuating weight gain in patients with severe mental illness should be considered. Pharmacological agents are described in detail in the appendix (p 21); the most evidence in individuals treated with drugs for psychosis is for metformin and topiramate.<sup>285</sup> Bariatric surgery can also be considered as a last-resort treatment if both behavioural and pharmacological interventions are not effective. Weight gain associated with

	Mechanism	Risks	Benefits	Evidence base in severe mental illness
Biguanide (metformin)	Increases insulin sensitivity; reduces hepatic synthesis and release of glucose; increases peripheral glucose uptake	Lactic acidosis; B12 deficiency; gastrointestinal effects (a modified release formulation can be tried if these occur); contraindicated in patients with estimated glomerular filtration rate <30 mL/min per 1.73 m <sup>2</sup>	Weight loss (3 kg); low risk of hypoglycaemia	Good evidence for use in patients with severe mental illness, and should be considered a first-line treatment; <sup>279</sup> consider use in patients with pre-diabetes who are receiving olanzapine and clozapine <sup>280</sup>
DPP4 inhibitor (eg, sitagliptin)	Inhibits action of DPP4 that acts to break down incretins (eg, GLP-1), resulting in increased incretin effect, as seen with GLP-1 receptor agonists	Possible increase in hospitalisations for heart failure with alogliptin and saxagliptin; possible increased risk of pancreatitis	No effect on weight; low risk of hypoglycaemia	Insufficient trial data in patients with severe mental illness
GLP-1 receptor agonist (eg, exenatide)	Incretin mimetic: stimulates release of insulin; reduces glucagon release; delays gastric emptying; reduces appetite	Nausea or vomiting; possible increased risk of pancreatitis; subcutaneous administration	Weight loss (3.0–4.5 kg); low risk of hypoglycaemia; liraglutide is approved by the FDA for prevention of major cardiac events	Current evidence base suggests it should be considered a second-line therapy in patients with severe mental illness; some evidence for the use of exenatide in patients treated with clozapine; <sup>281</sup> GLP-1 receptor agonists have been shown to reduce the transition to type 2 diabetes <sup>282</sup>
Sulfonylurea (eg, gliclazide)	Increases endogenous production of insulin	Weight gain; hypoglycaemia	None established	Insufficient trial data in patients with severe mental illness
SGLT2 inhibitor (eg, dapagliflozin)	Inhibits SGLT2 in the proximal renal tubule, thereby reducing reabsorption of glucose and promoting glucosuria	Polyuria; postural hypotension; urinary tract infection; diabetic ketoacidosis can occur in stress settings; mild fracture risk	Weight loss (2–3 kg); low risk of hypoglycaemia; empagliflozin is approved by the FDA to reduce cardiovascular mortality; canagliflozin reduces cardiac events	Insufficient trial data in patients with severe mental illness
Thiazolidinedione (eg, pioglitazone)	Improves insulin sensitivity by promoting adipogenesis and reducing circulating fatty acid and lipid availability	Weight gain; heart failure; oedema; bone fractures	Might reduce stroke risk; low risk of hypoglycaemia	Insufficient trial data in patients with severe mental illness
Insulin	Supplements the insufficient endogenous production of insulin	Weight gain; hypoglycaemia	In acute settings or in poorly controlled type 2 diabetes, it might be the only effective treatment for stabilising sugars	Insufficient trial data in patients with severe mental illness

DPP4=dipeptidyl peptidase 4. GLP-1=glucagon-like peptide 1. FDA=US Food and Drug Administration. SGLT2=sodium-glucose cotransporter 2.

**Table 3: Risks and benefits of different drug classes for diabetes treatment and the evidence base for their use in patients with severe mental illness**

drugs for psychosis is not usually dose-dependent, so dose reduction will not be effective in reducing weight.<sup>286</sup>

**Arterial hypertension**

Pharmacological management of hypertension in patients with severe mental illness should follow guidelines used for the general population (appendix p 20).

**Dyslipidaemia**

Data on dyslipidaemia treatments that are specific for people with mental illness are scarce. Therefore, the best guidance available comes from general population studies. Statins reduce the risk of coronary heart disease events by 20–30%.<sup>287–289</sup> Cardiovascular risk calculators that incorporate factors such as age, hypertension, and type 2 diabetes diagnosis, and particularly those that include diagnosis of severe mental illness and use of drugs for psychosis (eg, QRISK3 calculator),<sup>290</sup> inform decisions about the initiation of statin therapy.<sup>291</sup> The pharmacological management of dyslipidaemia in patients with severe mental illness should follow guidelines used in the general population (panel 3). No strong evidence is available to support targeting hypertriglyceridaemia therapeutically to decrease cardiovascular risk.

**Sinus tachycardia**

Sinus tachycardia in patients with severe mental illness could be a feature of the illness, of drug withdrawal, or of an acute drug reaction (eg, serotonin syndrome or neuroleptic malignant syndrome). Psychotropic-related tachycardia is persistent, and usually dose-related.<sup>295</sup> If dose reduction or switching medication is not feasible, and inappropriate sinus tachycardia has been confirmed (including a 24-h ECG), the first-line treatment is a cardioselective β blocker (eg, atenolol 25–100 mg per day) with up-titration until the heart rate normalises (60–100 beats per min). If β blockers are not tolerated (eg, in patients with postural hypotension), or are ineffective, then ivabradine (5.0–7.5 mg twice a day) can be introduced.<sup>296</sup> Ivabradine has been shown to be effective and tolerated in clozapine-induced tachycardia.<sup>297</sup>

**Postural hypotension**

In addition to the causes of postural hypotension that exist in the general population, it can be related to taking psychotropic medication, notably clozapine and quetiapine.<sup>298</sup> If increased fluid intake and salt consumption are ineffective, a dose adjustment or switch of the responsible psychiatric medication should be

**Panel 3: General principles for prescribing antihypertensives and statins to people with severe mental illness**

**Antihypertensives**

- If the patient has no indications for a specific medication, then any of the following four medication classes can be used as first-line treatment:<sup>292</sup> thiazide diuretics, long-acting calcium-channel blockers (eg, amlodipine), angiotensin-converting enzyme inhibitors, and angiotensin II receptor antagonists
- A thiazide-like diuretic or long-acting dihydropyridine calcium-channel blocker should be used as the initial monotherapy for black patients<sup>293</sup>

**Statins**

- Consider using a cardiovascular disease risk assessment tool (eg, QRISK3 calculator)<sup>290</sup> to guide whether statins should be used; measure total and HDL cholesterol to achieve the best estimate of cardiovascular disease risk<sup>294</sup>
- Before offering statins to the patient for primary prevention of cardiovascular disease, discuss the benefits of lifestyle modification, and optimise the management of other modifiable cardiovascular disease risk factors, if possible
- Offer statin therapy (eg, atorvastatin 20 mg once a day) for primary prevention of cardiovascular disease if the QRISK3 assessment tool shows that the individual has a 10-year risk of developing cardiovascular disease of 10% or higher<sup>294</sup>

considered if safe to do so. If dose adjustment or medication switch is not feasible, non-pharmacological therapy (appendix p 22) with regular blood pressure monitoring should be undertaken.

*Extrapyramidal side-effects*

Around 10% of individuals who are taking antipsychotic medications have acute dystonia.<sup>299</sup> It is more common in antipsychotic-naïve individuals, and can occur rapidly after the initiation of the drug for psychosis. Acute dystonia can be treated with an anticholinergic medication (eg, benztropine), which is given orally, intramuscularly, or intravenously, depending on urgency. Parkinsonism is seen in approximately 20% of individuals taking antipsychotic medications.<sup>300</sup> If changing medication or reducing the dose is not effective or feasible, patients can be given an anticholinergic medication. The risk of akathisia varies for different drugs for psychosis, but is estimated to occur in 25% of individuals taking first-generation antipsychotics.<sup>301</sup> If dose reduction of the causative medication is unsuccessful, a switch to quetiapine, olanzapine, or clozapine can be considered.<sup>302,303</sup> Other treatments include  $\beta$  blockers (eg, propranolol 30–90 mg per day),<sup>304</sup> 5-hydroxytryptamine receptor 2 antagonists (eg, mirtazapine 15 mg per day, mianserin 30 mg per day, or cyproheptadine 16 mg per day),<sup>304–306</sup> antimuscarinics (eg,

benztropine 6 mg per day),<sup>307</sup> and benzodiazepines (eg, clonazepam 0.5–3.0 mg per day).<sup>304</sup> Tardive dyskinesia occurs in 5% of patients per year of exposure to drugs for psychosis.<sup>251</sup> If tardive dyskinesia occurs, it is recommended that anticholinergics are stopped and treatment is rationalised (ie, stopping the causative drug or reducing the dose), with clozapine most likely to provide symptomatic relief.<sup>308</sup> Adjunctive treatments include tetrabenazine,<sup>309</sup> and novel vesicle monoamine transporter type 2 inhibitors that have been approved by the US Food and Drug Administration, such as valbenazine and deutetrabenazine.<sup>310</sup>

*Anticholinergic effects*

The first-line management of anticholinergic ADRs of drugs for psychosis is dose reduction, if it is feasible.<sup>298</sup> For constipation caused by an anticholinergic-related reduction in gastric motility,<sup>311</sup> stool softeners (eg, macrogols or docusates) and a stimulant laxative (eg, senna) might be effective.<sup>312</sup> For patients taking clozapine, sialorrhoea is common. Augmentation with diphenhydramine or benzamide antipsychotics (eg, amisulpride) can ameliorate sialorrhoea.<sup>313</sup>

*Sexual side-effects*

Sexual side-effects can include reduced libido, delayed or blocked ejaculation, erectile dysfunction, decreased orgasm, persistent genital arousal, lactation, and numbness of the vagina or nipples. Patients with sexual side-effects should be assessed by examining prolactin concentration, concomitant medications, and comorbid causes (which can be psychological or physical—eg, diabetes or cardiometabolic disease).<sup>298</sup> If prolactin is elevated, the antipsychotic dose might need to be reduced or the drug might need to be switched. Alternatively, low-dose aripiprazole could be prescribed.<sup>298</sup> Patients who are taking SSRIs and have sexual dysfunction could be switched to another drug for depression, or given a trial of bupropion or sildenafil, if appropriate.<sup>314</sup>

*Thyroid disease*

In patients with hyperthyroidism who are taking lithium, a pertechnetate scan might be required to determine the cause of the thyroid disorder. Graves' hyperthyroidism or toxic multinodular goitre can be treated with thionamides, radioiodine, or surgery, whereas if the patient has lithium-induced thyroiditis, cessation of lithium should be considered.<sup>267</sup> Lithium-induced hypothyroidism can occur in the presence or absence of goitre. When lithium-induced hypothyroidism is present, treatment with levothyroxine is indicated, according to general guidelines for the management of primary hypothyroidism.<sup>315</sup> Lithium-induced goitre requires an ultrasound examination to assess for diffuse versus nodular enlargement, and where appropriate, fine needle aspiration should be done to guide diagnosis. Levothyroxine might stabilise or

reduce lithium-induced goitre.<sup>316</sup> Because of the high incidence of thyroid disease in patients who are taking lithium, baseline clinical thyroid examination and serological assessment of thyroid function is recommended, with at least annual monitoring during treatment. The development of thyroid dysfunction while taking lithium does not usually require lithium therapy to be stopped; the risks and benefits of continuing treatment should always be considered.

#### Renal disease

Lithium-induced nephrogenic diabetes insipidus, with associated polyuria and polydipsia, can affect a patient's quality of life. It is usually at least partially reversible with cessation of lithium, although it can be permanent after prolonged therapy.<sup>317</sup> If ongoing lithium treatment is required and the patient only has a mild-to-moderate renal-concentrating defect, the introduction of amiloride (which is thought to reduce the accumulation of lithium in collecting tubule cells) can reduce urine volume, increase urine osmolality, and improve responsiveness to antidiuretic hormone.<sup>318</sup> Thiazide diuretics with a low-sodium diet have also been found to have a paradoxical effect of reducing urinary output in nephrogenic diabetes insipidus.<sup>319</sup> For patients with chronic kidney disease secondary to chronic interstitial nephritis, lithium cessation might be indicated if renal insufficiency progresses. Some renal function might be recovered after discontinuation of lithium, although progressive renal failure can occur.<sup>320</sup> Regular monitoring of renal function is required, and monitoring of other risk factors for renal failure (eg, hypertension and diabetes) is also important.

#### Nicotine and smoking cessation

Smoking, and its associated physical morbidity, is a key contributor to the excess mortality of individuals with mental illness.<sup>321,322</sup> Therefore, reducing smoking rates is a priority. However, clinicians should be aware that abrupt smoking cessation can change the pharmacokinetics and pharmacodynamics of many psychotropic medications (eg, increasing blood concentrations of clozapine, and to a lesser extent olanzapine and fluvoxamine). Patients who are planning to stop smoking should be followed up closely; plasma concentrations of medications should be monitored, if possible, and appropriate dose adjustments should be made.

In the general population, nicotine replacement therapy increases the odds of successful smoking cessation by 1.5–2.0 times, with good evidence of efficacy in patients with mental illness.<sup>323</sup> Nicotine replacement therapies should be used for approximately 8–12 weeks. Different preparations are available, including sublingual tablets, gum, patches, nasal spray, inhalators, lozenges, and electronic cigarettes (e-cigarettes). Bupropion and varenicline can increase the likelihood of successful smoking cessation without increasing the risk of

neuropsychiatric events in people with severe mental illness.<sup>324</sup>

In conclusion, the burden of ADRs associated with psychotropic medications is important to consider in the context of treatment effectiveness and patient acceptability. Drugs for psychosis (or antipsychotics) are the best evidence-based treatments for psychotic disorders, and lead to lower all-cause mortality in schizophrenia than giving no treatment.<sup>325</sup> Mood stabilisers are the most effective treatment for bipolar affective disorder,<sup>263</sup> and drugs for depression (or antidepressants) have an important role in the treatment of depression.<sup>326</sup> Careful and regular monitoring of laboratory and clinical parameters could help to identify ADRs early, and prevent the development of iatrogenic comorbidities. We would advise against ceasing or switching psychotropic treatments to modalities that are less effective without careful consideration of the risk of relapse. Involvement of the patient in treatment decisions is important when balancing the effectiveness of a medication against its ADRs.<sup>327</sup>

## Part 4: Multidisciplinary approaches to multimorbidity

### Lifestyle interventions: what works?

Modifiable lifestyle factors, such as physical activity, diet, and smoking, are increasingly recognised as being fundamental to both physical and mental health. Interventions targeting these modifiable risk factors, delivered by practitioners with specific expertise, are referred to as multidisciplinary lifestyle interventions. The efficacy of such multidisciplinary lifestyle interventions in reducing the risk of cardiometabolic-related morbidity in the general population is well established.<sup>283</sup> Accordingly, the 2018 WHO guidelines<sup>328</sup> recommend that lifestyle interventions are considered as first-line strategies for the management of physical health (including weight management, cardiovascular disease and cardiovascular risk reduction, and diabetes treatment and prevention) in adults with severe mental illness. However, a broad spectrum of mental disorders, not only severe mental illness, are associated with high rates of cardiometabolic diseases (Part 1) and lifestyle risk factors (Part 2) that are compounded by the medications that are commonly used to treat mental illnesses (Part 3). Thus, a first step in reducing physical health disparities for people with mental illness is the adoption, translation, and routine provision of evidence-based lifestyle interventions as a standard component of mental health care. However, not all lifestyle interventions are equally useful. The efficacy and effectiveness of multidisciplinary lifestyle interventions are impacted by both their content and timing of delivery. Some key considerations for the individual components of multidisciplinary interventions are presented in panel 4.

Although it might seem counterintuitive to dedicate intensive resources to individuals with relatively good metabolic health, focusing on cardiometabolic protection



**Panel 4: Key components of lifestyle interventions**

**Smoking cessation**

*Challenge: general population approaches have not worked for people with mental illness*

- Although smoking rates have substantially decreased for the general population since the mid-1990s, they have remained high for people with mental illness;<sup>329</sup> as a result, people with mental illness now consume around half of all cigarettes sold in the USA, Australia, and the UK<sup>321,330</sup>
- People with mental illness are as motivated to stop smoking as people without mental illness, but they are more nicotine-dependent and less likely to seek out and receive appropriate interventions tailored to their needs<sup>331,332</sup>
- Smoking-related deaths disproportionately affect people with mental illness, and smoking is a leading cause of the premature mortality observed in this population<sup>321,322</sup>

*Emerging solution: specialised cessation interventions*

- Evidence on pharmacological interventions shows that they could be effective; for instance, a 2016 meta-analysis<sup>324</sup> showed that bupropion and varenicline were the most effective interventions for smoking cessation for people with severe mental illness, and both resulted in a five times increase in smoking cessation compared with placebo treatments
- For non-pharmacological interventions to be effective, they must account for the additional barriers to treatment that people with mental illness can have (eg, cognitive impairments);<sup>333</sup> for instance, the SCIMITAR+ programme is a candidate model of a bespoke smoking cessation intervention for people with severe mental illness, which was developed with service users to address the needs of this population<sup>334</sup>

- Policy-level interventions can also be implemented; for instance, in 2016 NHS England announced that all mental health services would become smoke free, which included a ban on smoking on mental health wards and hospital premises, and the dissemination of smoking cessation interventions throughout community care.<sup>335</sup> Initial data suggest that smoking bans and bespoke smoking cessation programmes are well received in inpatient settings, and they could have broader benefits by supporting a culture of physical health and wellbeing within mental health services<sup>336</sup>

*Future research priorities: improve the accessibility and timing of cessation interventions*

- Training on smoking cessation is now freely available online for health-care professionals, which could increase access to evidence-based interventions for people with mental illness; for instance, a concise e-learning tool on smoking from the National Centre for Smoking Cessation and Training<sup>330</sup> could help front-line mental health staff to deliver smoking cessation advice
- Electronic cigarettes (e-cigarettes) are already widely used among people with a range of mental health disorders,<sup>337</sup> and are a potentially useful tool for reducing smoking-related deaths. The UK Science and Technology Committee has advised mental health trusts to allow e-cigarette use on their premises; however, e-cigarettes are not authorised or available in many countries, and further research is required to establish the health outcomes of using e-cigarettes as a smoking harm-reduction intervention<sup>338</sup>
- Early intervention for smoking is feasible,<sup>339</sup> and could improve cessation rates and long-term physical-health outcomes<sup>340</sup>

(Continues on next page)

in at-risk populations could be the optimal approach for lifestyle interventions (panel 2). The Diabetes Prevention Program (DPP),<sup>283</sup> developed and evaluated in the USA, is an example of a gold-standard lifestyle intervention (panel 5). The key features of DPP include individual case managers; frequent face-to-face contact with participants; a structured educational component that includes behavioural self-management strategies; supervised physical activity sessions; a maintenance intervention that combines group and individual approaches, motivational strategies, and individualisation through a so-called toolbox of adherence strategies; tailoring of materials and strategies to address ethnic diversity; and an extensive network of training, feedback, and clinical support.<sup>283</sup>

The primary study on DPP<sup>284</sup> recruited 3234 adults without diabetes who were at risk of developing type 2 diabetes (established via multiple risk factors); patients were assigned to receive placebo, metformin, or a lifestyle intervention that involved at least 150 min of physical activity per week with the goal of at least a 7% weight

loss. The lifestyle intervention resulted in a 58% reduction in the development of type 2 diabetes over the 3-year study, with 4.8 cases of diabetes per 100 person-years observed in the lifestyle intervention group, compared with 11.0 cases in the placebo group (incidence in the metformin group was 7.8 cases per 100 person-years).<sup>283,284</sup> Furthermore, both the clinical benefits and cost-effectiveness of the DPP lifestyle intervention were maintained over a 10-year follow-up, as compared with metformin as the control condition.<sup>361,362</sup> These results show that lifestyle interventions with beneficial components (panel 5) can reduce the incidence and burden of cardiometabolic diseases when used as a preventive strategy in at-risk populations. Notably, the DPP has also been adapted and successfully delivered in primary-care settings.<sup>363</sup>

Considering the increased metabolic and lifestyle risk observed across multiple classes of mental health disorder (Parts 1 and 2), the DPP could be adapted for people with mental illness and made available through

(Panel 4 continued from previous page)

### Physical activity

*Challenge: patients find it difficult to stay motivated*

- Weight loss is often a primary motivation factor for physical activity,<sup>341</sup> but exercise alone in the absence of dietary modification will not reliably reduce a patient's bodyweight, particularly in the short term;<sup>342</sup> exercise can attenuate further weight gain, but weight maintenance might not be a strong motivator for people with mental illness, particularly if they were overweight before the onset of mental illness, which can result in disengagement with exercise

*Emerging solution: fitness goals designed by fitness professionals*

- Rather than focusing on weight loss, improving fitness might be a more motivating<sup>341</sup> and achievable<sup>343,344</sup> goal for exercise interventions for people with mental illness; improving fitness can also have important health benefits, because even a modest improvement is associated with a 15% decrease in mortality in the general population<sup>345</sup>
- Exercise interventions delivered by qualified exercise professionals (with a university qualification in exercise prescription, such as physiotherapists or exercise physiologists) have significantly greater physical and psychological benefits and adherence compared with interventions delivered by non-specialised practitioners.<sup>346-348</sup> In addition, the integration of qualified exercise professionals into mental health services could ensure that mental health staff have the knowledge and training to give clear advice on exercise

*Future research priorities: varied and personalised exercise programmes*

- Although most research on physical activity has focused on aerobic exercise, evidence from the general population increasingly shows that strength and resistance training or so-called high-intensity interval training can have beneficial effects for both metabolic and mental health<sup>349-351</sup>
- Given that enjoyment and satisfaction are key factors in determining exercise adherence,<sup>352</sup> offering a range of exercise options that accommodate patient preferences and goals will be important for establishing sustainable and engaging exercise routines

### Diet

*Challenge: additive effect of medication and diet*

- Dietary risks are a leading risk factor for cardiometabolic disease identified by the Global Burden of Disease Study,<sup>353</sup> for people with mental illness, the risk is exacerbated<sup>128,138</sup> because of the side-effects of psychotropic medications (eg, excessive or insatiable hunger, cravings for high-calorie, low-nutrient foods),<sup>183,354</sup> an insensitive reward system and poor cognitive control,<sup>355</sup> and food insecurity and financial constraints<sup>356</sup>

*Emerging solution: dietary support*

- Improved diet quality<sup>357</sup> and reduced bodyweight<sup>358</sup> are both associated with decreased mortality in the general population
- Dietary interventions in people with mental illness are more effective if they are delivered by specialist clinicians, such as dietitians, and at an early stage of treatment;<sup>359</sup> cardiometabolic care and subsequent dietary intervention should be implemented within a multidisciplinary framework<sup>360</sup>

*Future research priorities: personalised pathways to health and fitness*

- As with exercise, the most effective dietary regime for people with mental illness will be one that is sustainable; future research might identify strategies that alleviate the obesogenic effects of psychotropic medications, and that address the insensitive reward system and poor cognitive control of some people with mental illness
- Links between dietary intake, the microbiome, inflammation, and obesity are increasingly becoming clear, and could provide new ways to improve physical outcomes for people with mental illness

primary care, on a referral basis. The use of such transdiagnostic, evidence-based, and cost-effective lifestyle interventions could help to protect the cardiometabolic health of people with mental illness who are treated in primary care settings. Furthermore, evidence increasingly shows that supervised exercise training (a key component of the DPP) can improve psychiatric symptoms, cognition, and functioning across a range of mental health diagnoses.<sup>346,364,365</sup> Therefore, integrating the DPP principles into mental health care could improve overall recovery, not only metabolic health. However, the majority of DPP studies to date have excluded individuals with a "major psychiatric disorder which, in opinion of

clinic staff, would impede conduct of the DPP".<sup>284</sup> The DPP needs to be analysed as a transdiagnostic lifestyle intervention for people with mental illness through primary care services and specialised mental health services. Although the core principles of the DPP are crucial to its design and delivery, more support is likely to be required by people with severe mental illness compared with the amount needed to effect change in the general population. A randomised controlled trial of an adapted version of the DPP for people with severe mental illness found significant reductions in obesity and other metabolic risk markers associated with antipsychotic treatment compared with usual care.<sup>366</sup>

**Panel 5: Lifestyle intervention guidelines adapted from the Diabetes Prevention Program<sup>283</sup>**

**Measurable and specific goals**

- Maintain bodyweight or reduce by between 5% and 7% of total bodyweight
- Reduce calorie intake (500–1000 kcal less than the calorie intake needed for weight maintenance per day, and a maximum of 25% of calories from fat), and improve diet quality
- Increase the number of minutes of physical activity (meet recommendations of 150 min per week of moderate-to-vigorous physical activity)
- Replace sedentary behaviour with light intensity activity as often as possible
- Increase cardiorespiratory fitness
- Cessation of smoking

**Case managers or lifestyle coaches with university (or equivalent) training in nutrition and dietetics, exercise prescription, or behavioural change**

- Allow for individualised programme design and delivery
- Offer a combination of group sessions and one-on-one sessions
- Provide supervised exercise and nutrition sessions at least two times per week (eg, community centre sessions, neighbourhood group walks, or one-on-one personal training)
- Do relevant assessments at regular intervals
- Ensure lifestyle coaches have training in psychopathology and the basic principles of working with people with mental illness

**Frequent contact and ongoing intervention**

- Deliver core curriculum on topics including nutrition (modifying energy intake), physical activity (and sedentary behaviour), and behavioural self-management (barrier identification and problem solving)
- Provide a flexible maintenance programme with supplemental group classes
- Provide motivation campaigns and restart opportunities

**Individualisation through a toolbox of adherence strategies**

- Self-monitoring of outcomes and behaviours, such as weight, physical activity, sedentary behaviour, and dietary intake (fat and calorie intake)
- Barriers to treatment are identified and addressed with simple, individualised resources (eg, a cookbook might be given to a patient trying to improve their diet)

**Strategies that are adapted for culturally and ethnically diverse groups**

- Translation of documentation to local languages
- Identification of culturally appropriate resources and intervention approaches
- Cooking groups that allow for dietary restrictions or religious requirements

**Local and national network of training, feedback, and clinical support**

- Appropriate training of existing and emerging mental health staff
- Clear referral pathways and the integration of lifestyle coaches into a standard multidisciplinary mental health team
- Monitoring and evaluation of effectiveness and adherence

Conversely, in some situations, adaptation of evidence-based programmes for people with mental illness can threaten their effectiveness. For instance, reducing the amount or frequency of interventional components, because of conflicting demands on the priorities and workload of mental health staff and diagnostic overshadowing,<sup>20</sup> could mean the programme is insufficient to effect change for those patients. The challenge for policy makers, clinicians, and service

providers is to apply established, effective principles of behaviour change to people with mental illness, particularly with regards to adopting a framework of early intervention and prevention.<sup>13</sup>

**Implementing lifestyle interventions for severe mental illness**

A 2019 meta-review<sup>285</sup> aggregated data from 27 meta-analyses of physical health interventions for people with schizophrenia. Exercise, diet, and broader lifestyle interventions (eg, sleep hygiene, smoking cessation strategies, motivational interviewing) had significant benefits for multiple cardiometabolic outcomes (including bodyweight, waist circumference, blood pressure, and glucose and lipid markers), with a similar efficacy to pharmacological management of metabolic health.<sup>285</sup> However, the clinical trials from which these efficacy data were predominantly derived could reduce the generalisability and external validity of the findings, because trials are rarely done under real-world conditions and are typically resourced differently to routine clinical care.<sup>367</sup>

Few studies have been done on the effectiveness, pragmatic implementation, or sustainability of lifestyle interventions in people with mental illness.<sup>368</sup> Furthermore, several large-scale clinical trials in people with mental illness have had null findings. To provide guidance on effective implementation of lifestyle interventions within mental health services, the interventions that are associated with negative and positive outcomes in trials should be considered. Trials of lifestyle interventions in mental health care often do not meet all the principles of programmes such as the DPP (appendix p 23). Specific aspects of the DPP that have been poorly implemented in trials are: (1) using qualified exercise professionals and dietitians to deliver lifestyle interventions, (2) providing sufficient access to supervised exercise services, and (3) ensuring that existing mental health staff are familiar with the lifestyle interventions. Large-scale clinical trials of lifestyle interventions addressing multiple risk factors in people with mental illness are described in the appendix (pp 24–30).

The high acceptability of lifestyle interventions among patients<sup>365,366,369,370</sup> means that they are a novel route to reach typically disengaged service users in more traditional mental health treatment. For example, providing gym-based resistance exercise is a potential clinical pathway to care for young people with early psychosis,<sup>369</sup> or veterans with post-traumatic stress disorder.<sup>371</sup> However, an important consideration is how such programmes are applied across different clinical and broader public health settings. Flexibility in delivery, a focus on practical exercise and dietary advice, and provision of support to integrate the lifestyle measures into daily life are highly recommended.<sup>372,373</sup> Further research is needed on how interventions are delivered; a mixed model that involves both online and face-to-face delivery is a potentially balanced and cost-effective way forward (appendix pp 31–34).<sup>206,193</sup>

### Training health professionals for a culture shift

Multidisciplinary teams in mental health settings are rapidly evolving to include allied health professionals with expertise in nutrition, physical activity, behaviour change, and other aspects of mental health, such as psychoeducation and mindfulness training. For this transition to be successful, allied health practitioners should receive at least introductory training in psychopathology and in the principles of working with patients with mental illness. Accordingly, the curriculum for health professionals, including dietitians, physiotherapists, and exercise physiologists should be updated to reflect the increasing role for such professionals within mental health teams.<sup>374</sup>

In addition, medical and mental health professionals should receive training on working with allied health professionals in an integrated manner, and understanding the principles of lifestyle interventions. The importance of training medical students in so-called lifestyle medicine is increasingly being recognised globally.<sup>375</sup> Efforts towards integrating lifestyle interventions within routine mental health care should avoid an isolated focus on individual-level behavioural changes, and should also include broader changes to service structure, delivery, and culture (see Part 5). For instance, evidence suggests that medical and nursing practitioners who have healthy lifestyle behaviours are more likely to recommend such behaviours to patients.<sup>376</sup> Advances in implementation science could also provide ways to ensure that lifestyle interventions have meaningful benefits for patient outcomes.<sup>368</sup>

### Barriers, opportunities, and future research

Some of the issues, emerging solutions, and research priorities for smoking cessation, physical activity, and dietary interventions for people with mental illness are presented in panel 4. For all types of lifestyle intervention, a gradient of intervention intensity, or so-called stepped care, needs to be considered. For example, intervention intensity might vary between individuals, treatment settings, and cultures, and could depend on the readiness to provide lifestyle interventions, particularly in low-resource settings.

Even in high-resource settings, only providing intensive lifestyle interventions through mental health services could cause issues for individuals who do not attend mental health centres frequently; those who have been discharged might find it difficult to stay engaged with lifestyle changes. One strategy for sustaining engagement with health behaviour interventions is the use of primary care referral schemes. For example, exercise referral schemes for people with mental illness typically involve health-care providers referring individuals to community-based organisations to provide free (or discounted) access to a wide range of fitness activities, facilities, and expertise through community leisure centres and services. Community-based interventions might also be a non-resource-intensive strategy for maintaining

physical activity behaviour in a way that complements and supports clinician-led strategies. Exercise referral has already been introduced through multiple large-scale implementation projects for sedentary adults in primary care in the UK, although only small beneficial effects have been found to date.<sup>172,377</sup> However, preliminary data show that community exercise can be beneficial and engaging for young people with mental illness, including for those with severe conditions.<sup>378,379</sup> Community-based diet programmes, such as Weight Watchers, are cost-effective weight-loss interventions when delivered via primary care to obese individuals.<sup>370,380</sup> Research is now warranted to determine the suitability and effectiveness of such programmes for psychiatric populations.

Mobile device health (or mHealth) technologies could provide new routes for applying adapted versions of programmes such as the DPP in patients with mental illness. For example, a pilot study<sup>381</sup> found that FitBit activity trackers could potentially be used alongside fitness applications (apps) in people with schizophrenia to deliver DPP-based interventions, with features such as daily prompts, motivational messages, and self-determined step-count goals. Participants found the technology to be engaging, motivating, and empowering,<sup>381</sup> but a small sample size (n=25) makes it difficult to determine efficacy. Although they have only been evaluated in small-scale pilot studies to date, mHealth technologies present potential opportunities to deliver a wide range of novel, scalable, and sustainable lifestyle interventions for people with mental illness. mHealth interventions could also be disseminated easily, even in low-resource settings. Therefore, further development and evaluation of evidence-based mHealth interventions for improving physical health in people with mental illness is warranted.

In conclusion, the principles of existing gold-standard prevention programmes, such as the DPP, can be used as a benchmark for the implementation and maintenance of lifestyle interventions as an integrated, routine component of mental health care (panel 5). However, programmes might need to be adapted to specific care settings, and for particular patient needs. Efforts are required to translate the DPP principles into both (1) preventive, transdiagnostic lifestyle interventions available through primary care, and (2) intensive interventions for specialist services. If these efforts are successful, effective programmes for protecting the cardiometabolic health of people living with mental illness could be implemented.

## Part 5: Innovations in integrating physical and mental health care

### Introduction

Social determinants, including poverty, poor education, unemployment, homelessness, and childhood abuse, increase the risk for both mental and physical illnesses.<sup>182,382</sup> The relationships between adversity, physical health, and mental health are complex, and risk

factors can act synergistically to reinforce disadvantage and disability.<sup>182</sup> For instance, people with mental illness are more likely to be in poverty and to have cardiometabolic and infectious diseases (see Parts 1 and 2), and conversely, chronic physical health conditions and social deprivation are key risk factors for mental illness.<sup>182,383,384</sup> A 2017 *Lancet*

Series<sup>385</sup> on the co-occurrence of chronic health conditions described how syndemic frameworks could be used to understand how health risks and comorbidities interact with one another within the broader environmental context. For instance, epidemiological research has applied syndemic frameworks to characterise the complex

	Directions and rationale	Actioned by
Treating syndemics	Examining how broader societal factors affect the interaction between physical and mental health conditions within a given region can provide insight into these comorbidities and their risk factors; in turn, this can inform the development and implementation of preventive strategies and interventions for chronic health conditions within a given socioeconomic setting	Led by public health; developed and implemented by national and local health-care providers
Preventing multimorbidity	Evidence-based integrated care should be provided from the onset of mental illness; changes are needed at the primary, secondary, and tertiary levels of care to reduce the prevalence and impact of physical health conditions in people with mental illness (panel 5)	Led by public health; delivered by primary, secondary, and tertiary care, and community groups
Primary and parallel care	Primary care is the first point of contact for most patients, and is an important part of care after discharge from specialist services. Implementing integrated models of mental and physical health care through primary care services could be effective for efficient management of physical health comorbidities in people with mental illness; however, the management of comorbid substance use disorders might depend on improving accessibility, referral pathways, and quality of dedicated parallel services	Led by commissioners of health-care organisations; developed via culturally sensitive integrated care models designed by local health professionals; and implemented by health-care practitioners
Implementation in low-income and middle-income countries	Incorporating integrated care models within the emerging mental health services of low-income and middle-income countries is important for reducing physical health inequalities for people with mental illness, and might also provide a more cost-effective approach to health-care provision in these settings	Led by commissioners of health-care organisations; developed via culturally sensitive integrated care models designed by local health professionals; and implemented by health-care practitioners
mHealth technology solutions	mHealth technology and other digital technologies provide many novel methods for promoting physical health and delivering interventions remotely. The low cost, scalability, and global accessibility of such approaches are highly appealing, particularly in low-income and middle-income settings; while the evidence-base is still nascent, this can be considered a high-priority area for future research	Led by mental health commissioners; developed with communities, researchers, and industry; and implemented by health-care practitioners

mHealth=mobile device health.

**Table 4: Considerations and directions for integrating health care**

	Year	Organisation	Illness	Outcomes
Management of physical health conditions in adults with severe mental disorders: WHO guidelines <sup>378</sup>	2018	WHO	Severe mental illness	Morbidity, premature mortality
Health matters: reducing health inequalities in mental illness <sup>350</sup>	2018	Public Health England	Severe mental illness	Morbidity, premature mortality
Bringing together physical and mental health: a new frontier for integrated care <sup>386</sup>	2016	King's Fund, London, UK	All mental illness	Cardiometabolic health
Improving physical healthcare for people living with severe mental illness in primary care: guidance for CCGs <sup>387</sup>	2018	NHS England	Severe mental illness	Premature mortality
The physical health of people with mental health conditions and/or addiction <sup>388</sup>	2017	Te Pou, Auckland, New Zealand	Severe mental illness	Mortality, morbidity
Excess mortality in persons with severe mental disorders: a multilevel intervention framework and priorities for clinical practice, policy, and research agendas <sup>121</sup>	2017	World Psychiatric Association	Severe mental illness	Premature mortality
Helping people with severe mental disorders live longer and healthier lives <sup>149</sup>	2017	WHO	Severe mental illness	Premature mortality
Improving the physical health of adults with severe mental illness: essential actions <sup>389</sup>	2016	Royal College of Psychiatrists	Severe mental illness	Premature mortality

CCG=clinical commissioning group.

**Table 5: Key resources on the integration of physical and mental health**

relationships between poverty, diabetes, mental illness, and infectious diseases in low-income settings.<sup>178</sup> This syndemic approach highlights that national and local conditions affect the interplay between physical and mental health, and shows the importance of taking social, political, and economic factors into account when designing public health interventions, or implementing changes to health services (table 4).<sup>179</sup>

Numerous national and international health-care and advisory bodies are now focusing on health inequalities in people with mental illnesses. Resources from these organisations (table 5, appendix pp 35–42) present new ideas and best practice approaches for improving the integration of physical and mental health care at the individual, health service, and societal levels. Several key health organisation guidelines<sup>149,330,386</sup> and academic articles<sup>179</sup> have included case studies of new local and national initiatives that account for the surrounding environmental conditions and improve the integration of physical and mental health care. As well as detailing required improvements to health care for existing patients, some sets of guidelines discuss approaches to prevention of chronic physical and mental health conditions.<sup>330,386</sup> Wide-scale adoption and implementation of strategies that aim to prevent chronic conditions (physical or mental), multimorbidity, and risk of premature mortality are required to reduce health inequalities for patients with mental illness in the future. Some examples and considerations for prevention at the primary, secondary, and tertiary levels are presented in panel 6.

### Improving integrated care for people with mental illness

Effective management of multimorbidity requires integrated care to be provided in a holistic manner,<sup>391</sup> so that common risk factors and the bidirectional interaction between physical and mental health disorders, and the treatments for each, can be addressed together.<sup>386</sup> Internationally, health organisations agree that primary care is the optimal setting for addressing and coordinating the management of multimorbidity.<sup>392,393</sup> In many countries, most people with mental illness first present to the health system through primary care, and most mental health care is delivered in primary care.<sup>179</sup> Patients requiring specialist mental health services still need ongoing engagement with primary care to deliver and coordinate other aspects of their health care, including prevention and management of comorbid physical illness. The aim of primary care is to provide equitable, accessible, safe, effective, comprehensive, person-centred care that meets the needs of individuals, families, and communities throughout life.<sup>394</sup> Therefore, primary care is ideal for managing multimorbidity, which requires an individualised approach that not only addresses the increased burden of multimorbidity, but also manages competing or conflicting treatment needs by accounting for individual preferences and treatment priorities.<sup>392</sup> Further discussion on how primary care settings should provide physical health care

### Panel 6: Prevention of physical health morbidity and mortality in individuals with mental illness

#### Primary prevention

Primary preventive strategies aim to provide people with the tools needed to live a healthy lifestyle<sup>190</sup> by avoiding smoking, alcohol and substance misuse, poor diet, and physical inactivity. Among those with mental illness, a healthy lifestyle should ideally be adopted in the early stages of illness to build healthy habits, and to protect physical health as much as possible. Primary prevention strategies need to be adapted for people with mental illness, because public health strategies that are effective in the general population are not always as effective for those with mental illness. Separation of patients into diagnostic categories (eg, depression, anxiety, and schizophrenia) is not an effective way of determining the best primary prevention strategies for physical health. Instead, transdiagnostic approaches that account for individual-level differences (eg, gender, cultural and ethnic identity, lifestyle risk factors, medication use, and social circumstances) will be more effective (see Part 2).

#### Secondary prevention

Secondary preventive strategies, such as screening and preventive treatments, are often underused in people with mental illness.<sup>216–218,222</sup> Many people with mental illness are affected by comorbid physical diseases, which can be present from illness onset (see Part 1). Population-scale data from NHS England<sup>390</sup> indicate that physical health intervention is required even from childhood for those with mental illness. At the age of 11–19 years, children with mental illness are three times as likely to be obese as children without mental illness.

#### Tertiary prevention

Tertiary preventive strategies involve improving treatment and recovery from disease. To be engaging and responsive, integrated care services require flexibility from individual clinicians and service planners. For example, cardiac mortality among patients with severe mental illness is significantly reduced by efficient administration of cardioprotective medications after first cardiac events.<sup>227</sup> This supports the claim made in new guidelines<sup>328,387</sup> that tertiary preventive measures for people with mental illness are underused, despite their potential to improve health and reduce premature mortality.

for people with mental illness is presented in the 2018 guidelines from NHS England<sup>387</sup> (appendix p 38).

As a minimum level of integration, health providers should communicate with each other frequently to ensure the safety and effectiveness of treatment. Ideally, services should take further steps towards integration, aiming for multidisciplinary care that is structured, comprehensive, and proactive. However, integration of this type usually involves overcoming bureaucratic barriers at the service level, such as difficulties in sharing medical records. Governance and funding issues can also restrict the

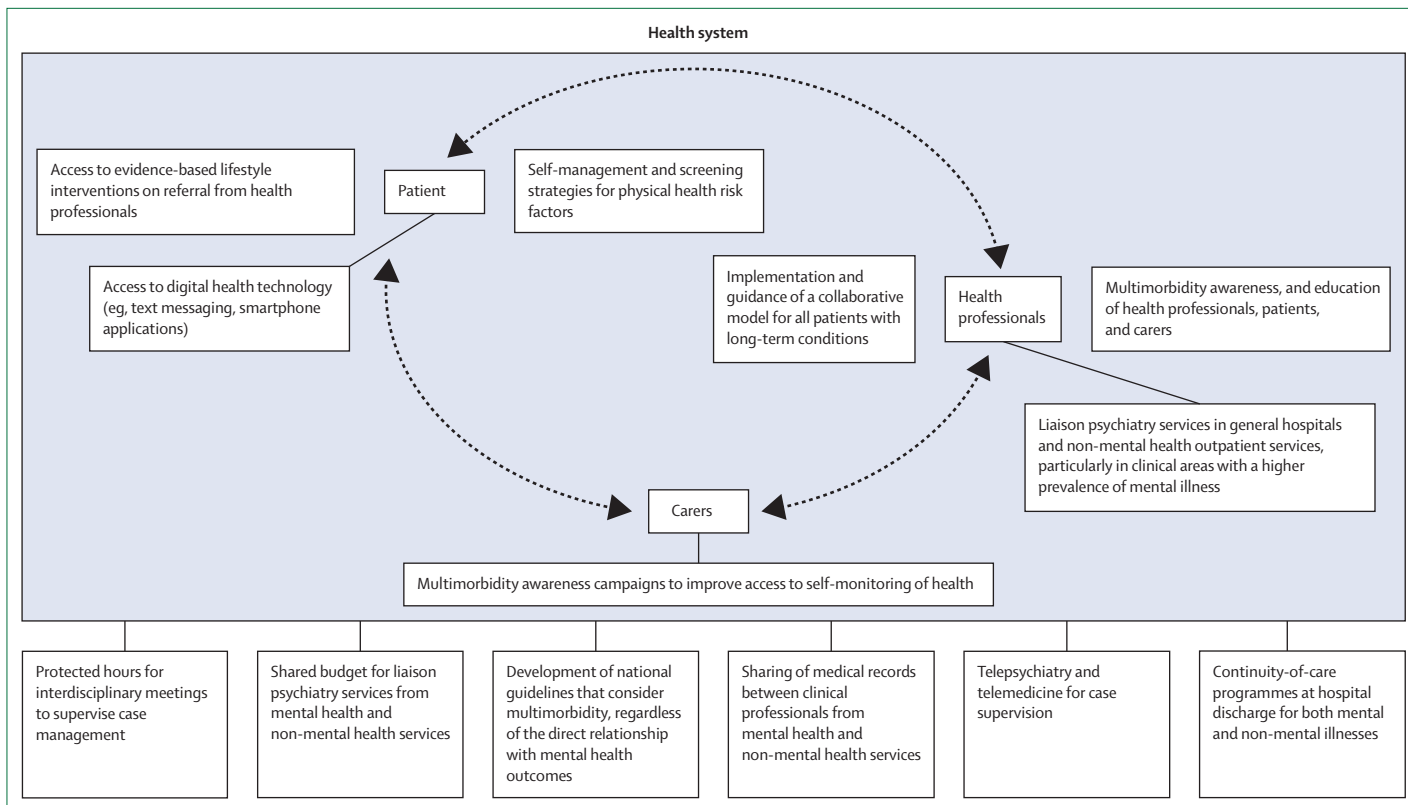


Figure 3: Proposed model of collaborative care for people with physical and mental comorbidities

provision of coordinated health care (figure 3). A 2016 report<sup>386</sup> from the King's Fund in the UK presents an aspirational approach towards improving integrated care across a range of physical and mental health conditions, with advice on overcoming common barriers to implementation. For instance, the report recommends a curriculum redesign to give all health professionals a common foundation in mental and physical health and encourage a whole-person approach, and creating opportunities for skills transfer between professionals (appendix p 35). Some examples of integrated care models, and their evaluated outcomes, are described in panel 7.

### Managing substance comorbidity and promoting smoking cessation

Across many mental illnesses, the use of alcohol, tobacco, and illicit drugs is more prevalent than in the general population, and is associated with worse physical and mental health outcomes (table 2).<sup>405–407</sup> A bidirectional relationship exists between substance misuse and mental illnesses, because substance misuse can cause and exacerbate mental illness, yet it is often used by patients as a way of reducing anxiety, dysphoria, and other symptoms.<sup>408</sup> Genetic risk factors for schizophrenia also appear to predispose individuals towards illicit drug use.<sup>409</sup>

Addressing substance misuse within mental health services should be a high priority.<sup>408</sup> However, many

services have no standardised screening for substance use, and mental health clinicians are often not trained to treat substance misuse.<sup>410</sup> For example, in high-income countries, people with severe mental illness report wanting to quit smoking as much as the general population, but are unlikely to be supported to do so.<sup>331,332</sup> Furthermore, patients are sometimes excluded from drug treatment programmes or mental health services if they have comorbid drug or alcohol use disorder.<sup>411</sup>

Because of the complexity of comorbid mental health and substance use disorders, patients need individualised treatment that has an emphasis on overcoming the barriers associated with mental illness and enhancing engagement with evidence-based treatments. Readiness for change, cognitive ability, and cognitive distortions resulting from mental illness need to be taken into account. Evidence-based treatments include motivational interviewing, cognitive behavioural therapy, and family interventions (also known as family therapy).<sup>408</sup>

Evidence-based interventions can be a challenge to implement in mental health services that are already struggling to meet demand. Notably, little evidence is available to recommend integrated interventions as compared with sequential or parallel treatment programmes, particularly in alcohol use disorders.<sup>412</sup> Each approach has advantages and disadvantages. One advantage of an integrated approach is that the patient

does not need to receive care from two services, whereas a disadvantage is that it requires substantial resources and investment from within the mental health system to train mental health clinicians in the treatment of substance use disorder. An advantage of sequential or parallel treatments is that the interventions are delivered within a highly specialised substance use programme. However, the approach requires coordination and sharing of information between agencies. A clear referral policy between mental health and substance misuse treatment services (including those in primary care) should be developed so that a programme of patient care is delivered consistently and in full.

Regardless of how interventions are provided, investment in screening within mental health services is a priority. Mental health clinicians should be trained to do regular assessments of comorbid substance use, to assess patients' readiness for change, and to provide motivational interviewing. An emphasis on a so-called no wrong door policy for accessing substance misuse treatments, in which everyone is accepted and offered treatment wherever they present, and the development of clear referral policies between mental health and substance misuse treatment services should be a priority.<sup>330</sup>

If cessation of substance misuse is not possible, harm-minimisation strategies should be adopted. For instance, patients might be able to switch to alternative, safer forms of the drug (eg, e-cigarettes, methadone, or buprenorphine and naloxone) or access could be provided to safe injecting facilities. The challenges and innovations regarding smoking cessation interventions for people with mental illness are presented in panel 4. The Royal College of Physicians published a report in 2016 on harm minimisation for those who are unable or find it difficult to quit, which recommended e-cigarettes, nicotine replacement therapy, and other non-tobacco nicotine products.<sup>413</sup>

### Innovations in integration for low-income and middle-income countries

In most low-income and middle-income countries, less than 1% of the health budget is spent on mental health,<sup>414</sup> including mental health care within specialist mental health services, general health services, and social care services.<sup>414</sup> As a result, mental health services are poorly resourced; 90% of people who need treatment do not receive any care.<sup>415</sup> Mental health services in low-income and middle-income countries predominantly rely on expensive psychotropic drugs, which are seldom available, and are associated with various side-effects that require close management (see Part 3).<sup>416</sup> Previously, little attention has been given to the complex bidirectional relationship between physical and mental health, and the relevance of screening, in low-income and middle-income settings.<sup>416,417</sup>

WHO guidelines from 2018 state that health inequalities for people with severe mental illness could be worse in low-income and middle-income countries than

### Panel 7: Examples of integrated care for physical and mental illness

Within the broad category of integrated care, collaborative care models are emerging as effective approaches that can simultaneously reduce costs and improve clinical outcomes and treatment adherence in the management of both mental illness and chronic physical conditions.<sup>395-398</sup> A core component of collaborative care models is the involvement of several health-care professionals working as a team, including a physician, a case manager, and a mental health clinician.<sup>395,396</sup> Although the specific actions vary between models, all collaborative care approaches use structured management plans, scheduled patient follow-ups, and extensive interprofessional communication.<sup>395</sup> Figure 3 shows the potential components of a collaborative care model for improving health management in people with physical and mental comorbidities.

The TEAMcare intervention<sup>399,400</sup> in 14 primary care clinics in Washington, USA, is an example of a collaborative care approach within primary care. TEAMcare was designed for adults with depression plus diabetes, heart disease, or both, and comprised pharmacological care management with integrated behavioural change support delivered by a nurse. Compared with usual care, the TEAMcare intervention resulted in significant improvements in metabolic health over 12 months, with a decrease in the percentage of glycated haemoglobin of -0.56% (95% CI -0.85 to -0.27), a decrease in LDL cholesterol of -9.1 mg/dL (-17.5 to -0.8), and a decrease in systolic blood pressure of -3.4 mm Hg (-6.9 to 0.1). A reduction in Symptom Checklist Depressive Scale score of more than 50% was found in more than three times as many patients in the TEAMcare group compared with usual care (odds ratio 3.37, 95% CI 1.84 to 6.17), as well as improved perceived self-efficacy, and greater patient satisfaction with medical care.<sup>399-401</sup>

The COINCIDE trial<sup>397</sup> tested a psychological intervention for people with depression and comorbid diabetes or cardiovascular disease that addressed behavioural activation, healthy lifestyle, exercise, and diet. This integrated approach resulted in significant improvements in depression and patient satisfaction at 4 months.<sup>373</sup> Health benefits were sustained at a 24-month follow-up, and the intervention was found to be cost-effective.<sup>373</sup> Additionally, evidence from the RAINBOW trial, published in 2019, supports the use of collaborative care models for improving both physical and mental health outcomes in people with common mental disorders and cardiometabolic comorbidities.<sup>402</sup> However, these evaluations of collaborative care models have all been done in high-income settings; similar evaluations in low-income and middle-income settings are needed (see Part 5).

Although collaborative care models have been shown to be effective for people with common mental disorders, the evidence for their use in people with long-standing severe mental illness is conflicting,<sup>374,403,404</sup> and optimal models of integrated care in this group are yet to be found. The PRIMROSE study<sup>374</sup> compared integrated primary care with usual care in 327 people with severe mental illness, and found no significant benefits for HDL cholesterol over 12 months. However, integrated care did have a 12-month mean cost difference of -£824 (95% CI -568 to 1079) compared with usual care, and was found to be cost-effective because of fewer hospital readmissions over a 12-month period.<sup>374</sup>

high-income countries, because "the resources are inadequate, the institutions are not well managed and access to quality mental health care and physical care is limited".<sup>328</sup> The largest gaps in life expectancy for people with severe mental illness compared with the general population are observed in low-income settings.<sup>3,149</sup> Mental health care systems in low-income and middle-income countries need to be reoriented towards integrated models. However, many low-income and middle-income countries do not have integrated physical health and mental health services, and have poorly developed



community-based services, resulting in over-reliance on institutional psychiatric care.<sup>416</sup> In many countries, mental health legislation and policies are outdated.<sup>417</sup> Specific barriers to the development and implementation of integrated mental and physical health policies include: insufficient coordination across different government levels; a shortage of trained staff at all levels of care; a need for commitment from health services; governmental bureaucracy; and shortage of funding. In addition, funding for health services is provided by several different sources, which makes the sharing of decisions and responsibility challenging.<sup>179</sup> As a consequence, in daily clinical practice, mental health providers in community settings do not generally ask about or test for physical health issues because they are not considered to be a priority, and time and resources are limited.<sup>418</sup>

In low-income and middle-income countries, there is an urgent need to increase awareness that patients with mental health illness could have physical health needs, and vice versa.<sup>416</sup> For example, public health campaigns could increase awareness of the links between chronic physical and mental disorders. In a 2016 review<sup>419</sup> of interventions for mental disorders at the population and community levels in low-income and middle-income countries, mass public awareness campaigns and school-based awareness programmes were considered to be good practice, with limited but promising evidence to support their use.

At the system level, the physical health of people with mental illness could be improved by increasing the competencies of existing staff at all levels of care. Although education campaigns on the links between chronic physical and mental health conditions are important tools, bringing about changes to skills and behaviour will require a long-term approach. Multiple training sessions and subsequent top-ups will usually be required, with rolling programmes to support staff turnover.<sup>420</sup> In addition, mental health policies in low-income and middle-income countries need to be changed to make an integrated care model the central focus of mental health care action plans. A review across high-income, middle-income, and lower-income settings<sup>179</sup> presents clear evidence for the rationale and effectiveness of integrated care. The Practical Approach to Care Kit (PACK), which comprises a guide, a training strategy, a health system strengthening intervention, and monitoring and evaluation, is an example of a best-practice approach towards providing universal integrated primary health care.<sup>421</sup> PACK has been successfully implemented in several low-income and middle-income countries, including Botswana, Brazil, Ethiopia, Nigeria, and South Africa.<sup>422</sup> Development of clinical practice guidelines that build on best-practice examples such as PACK and consider the local context, including staff attitudes and available resources, will be crucial in encouraging policy uptake in low-income and middle-income countries. The local context, including prevalent

knowledge, behaviours, and attitudes towards mental health conditions, is a good predictor for the success of implementing changes to clinical practice.<sup>420</sup>

Clinical practice guidelines should also incorporate strategies for collaboration between formal primary care and mental health services, and community-based providers, such as traditional healers. Approximately half of individuals seeking formal health care for mental disorders in low-income and middle-income countries choose traditional and religious healers as their first care provider, and this choice is associated with delays in accessing formal mental health services.<sup>423</sup> Based on research into collaboration between traditional healer and biomedical health systems in Uganda,<sup>424</sup> strategies should involve improving clinicians' understanding of traditional healers' explanatory models for illness, and vice versa. Trust between the two types of health-care providers needs to be improved so that they can interact, rather than operating in isolation. In particular, negative attitudes of clinicians towards traditional healers need to be addressed. The quality of care provided by traditional healers needs to be enhanced by improving hygiene practices and eliminating unethical practices.

Task sharing with key community-based providers is a potentially effective implementation strategy in low-resource settings. Task sharing is the process of transferring a task usually delivered by a scarce resource, such as a physician, to a rapidly trained and less scarce resource, such as a health-care worker.<sup>425,426</sup> Research on the implementation of task-sharing collaborative-care models is being done,<sup>427-429</sup> and the findings could improve our understanding of the quality, safety, effectiveness, and acceptability of such strategies for mental health disorders in low-income and middle-income countries. Case studies from non-governmental organisations show that inefficient health system structures can present barriers to successful task sharing,<sup>427</sup> indicating a need for more collaborative care services. However, whether such approaches will be successful in reducing premature mortality, improving wellbeing, and achieving better social outcomes in low-income and middle-income settings has yet to be fully established.<sup>427</sup>

### Digital technologies for people with mental illness

Digital technology plays an increasing role in promoting health, addressing risk factors, and managing physical disease, with growing evidence for its effectiveness. Mobile phones provide a particularly convenient platform for digital health-care delivery (also known as mHealth). WHO estimates that 95% of the global population lives in an area covered by mobile networks, and over 7 billion mobile contracts have been issued, which is one for almost every person on the planet.<sup>430</sup> Smartphone technologies are closing the so-called digital divide (ie, between those who have easy access to computers and the internet, and those who do not) that was previously present in low-income and middle-income countries.<sup>431</sup>

Unlike traditional health services that require attendance at a specific time and location, digital technology is available at a time and place that suits the patient.

Technologies as simple as text messaging have been shown to support lifestyle improvement. For example, in the TEXT ME trial of 710 patients with coronary heart disease,<sup>432</sup> patients in the intervention group received four personalised text messages per week for 6 months that provided advice, motivation, and support to change lifestyle behaviours. After 6 months, levels of LDL cholesterol were significantly lower in intervention participants compared with patients who received usual care, with concurrent reductions in systolic blood pressure and body-mass index, significant increases in physical activity, and a significant reduction in self-reported smoking. Further studies to assess the sustainability of these positive changes, and the effectiveness of text messaging in participants who have not yet experienced a cardiovascular event, are underway.<sup>433</sup> Text messaging can also support other important health behaviours, such as medication adherence for people with chronic conditions.<sup>434</sup>

Smartphone apps might promote healthy lifestyle change, but they vary in quality, and the quality of reported evaluation research is also inconsistent.<sup>435</sup> To date, few studies have examined clinical effectiveness or cost-effectiveness.<sup>436</sup> In addition, user engagement could be lower in everyday clinical practice than in trial settings.<sup>437,438</sup> Key strategies for effective user engagement include designing interventions in collaboration with patients, personalisation of interventions, and just-in-time adaptation (in which an intervention supports an individual's changing behaviours and contexts over time).<sup>439</sup> An example is the Australian FoodSwitch app, which uses a smartphone camera to scan the barcode of a food item, and recommends healthier alternatives from a crowd-sourced database of nutritional information.<sup>440</sup>

Several smartphone functionalities could be valuable for improving health, including the recording and analysis of data from sensors measuring activity or biological variables; access to health information via the internet; and the ability to engage with social media campaigns on lifestyle change.<sup>441</sup> Increasingly, people can access elements of their electronic health records via their smartphone or other portable device, providing an important opportunity for partnership between patients and health professionals, and for empowerment of patients to be more involved in decisions about their health care. However, because smartphones are more expensive than basic mobile phones and require an internet or data connection, text messaging might be required to reach the wider population in some low-income settings.<sup>442</sup>

To date, most studies using mHealth to promote healthy behaviours have recruited from the general population. Increasing numbers of individuals with severe mental illness also want to use technology to

manage their health.<sup>443</sup> Although few evaluations of mHealth for physical health in mental illness have been done, emerging evidence indicates that online peer-support platforms, smartphone apps, and fitness trackers can successfully increase walking and physical activity in people with severe mental illness.<sup>381,444,445</sup> Furthermore, a review of digital health technologies for people with depression<sup>446</sup> found that online lifestyle interventions can have positive effects on various health behaviours, including alcohol use, sleep, and physical activity. Although the evidence is only preliminary, mHealth is a promising route towards reducing physical health disparities for people with mental illness globally, and further research is warranted (figure 1). Widespread adoption of mHealth will depend not only on technological advances, but also on rigorous evaluation of digital health interventions and overcoming of common limitations, such as consumer perceptions (particularly around safety, reliability, and trustworthiness) and ethical risks, such as the potential for intrusion, coercion, and data privacy breaches.<sup>408,447</sup>

#### Who is responsible?

To turn ideas into actions, governments, health commissioners, and care providers must acknowledge their respective responsibilities for improving physical health for people with mental illness, and clear accountabilities must be established. For instance, primary prevention is often regarded as the duty of governments, rather than health services.<sup>448</sup> The increased risk for physical disease among people with mental illness, which can be present even before the first diagnosis of mental illness, could represent a failure at the public health level, and perhaps even wilful abandonment of educational and health promotion initiatives to reach this marginalised group. However, socioenvironmental factors that contribute to poor physical health, such as a shortage of green spaces and walking routes, the affordability and accessibility of fast foods compared with healthy foods, and tobacco and alcohol advertising (and associated legislation), are all areas that could feasibly be targeted by local and national health policy to improve the physical health of people with mental illness.

Furthermore, increasing evidence suggests that obesity,<sup>449,450</sup> smoking,<sup>451,452</sup> and physical inactivity<sup>453,454</sup> are dual risk factors for both chronic physical conditions and mental illnesses. Because these risk factors are also associated with social deprivation,<sup>182,455</sup> greater investment in public health schemes and policy to proactively address them in at-risk groups, particularly in young people, could potentially reduce the incidence of both physical and mental illnesses. However, the effectiveness of such schemes has yet to be demonstrated, and should be considered a promising area for future research (figure 1).

The risk of physical disease in people with mental illness is further compounded by barriers to health care

at the personal, service, and social levels for this population. As a priority action, governments must address the inequalities in health insurance and access to care for people with mental illness, to provide a suitable environment for effective medical and lifestyle interventions. Additionally, health commissioners must acknowledge the shortage of resources allocated to the protection of cardiometabolic health in mental health services, and the broad neglect of physical health risks in the treatment of mental illness.

Clinical staff should also reflect on the duty of care that they have to people with mental illness, both at an individual level and through their national associations. Given the foreseeable nature of poor physical health outcomes, protecting the physical health of people receiving treatment for mental illness should be regarded as within the scope of clinical duty of care. Within sufficiently resourced settings, this duty of care must include: (1) measuring and addressing the physical health of the patient; (2) clearly explaining the risks associated with treatment; and (3) taking appropriate action to mitigate those risks and protect the physical health of the patient. As demonstrated in this Commission, and evidenced in guidelines (appendix pp 35–42), good clinical practice in mental health care is increasingly considered to include monitoring the physical health of service users.

The allocation of research funding is another pathway through which systemic discrimination affects the health and wellbeing of people with mental illness. Major research councils must aim to provide more funding to address the physical health disparities that affect people with mental illness. As a solely economic justification, the allocation of resources should at least correspond with the demonstrated financial cost of physical and mental comorbidities (see panel 2). This economic burden must also be considered alongside the unresolved (and worsening<sup>3,21–23</sup>) personal burden of comorbid physical diseases that disproportionately affect people with mental illness across the entire life course. Substantial research investment in this area is now required to eliminate physical health inequalities, and to develop novel methods that will prevent these disparities from arising in future generations.

## Conclusion

Large disparities in physical health for those with mental illness are an ongoing health issue, and might even be worsening in some regions. Although this inequity is increasingly gaining attention, further investment, intervention, and research are urgently required to address the premature mortality and lifelong burden of poor physical health associated with mental illness.

Nonetheless, our Commission takes an optimistic approach, and describes how disparities could be reduced through evidence-based prescribing and better integration of physical and mental health care. Our

priority actions for health policy, clinical services, and future research are presented in figure 1. Promisingly, multiple national and international guidelines now present feasible actions for improving the integration of physical and mental health, across various health and social care settings. Broader implementation of lifestyle interventions for mental illness is also required to reduce elevated cardiometabolic risk and attenuate medication side-effects. Whenever possible, interventions should maintain the core principles of evidence-based lifestyle programmes (such as the DPP) and be made accessible to those who do not have current physical comorbidities, with the aim of protecting cardiometabolic health from the earliest stages of mental health treatment. From a public health perspective, further exploration of population-scale strategies for primary prevention of co-occurring physical and mental disorders is warranted. Additionally, more government action is required to prevent discrimination and ensure equitable access to all aspects of health care for those with mental illness. Overall, protecting the physical health of people with mental illness should be considered an international priority for reducing the personal, social, and economic burden of mental health conditions.

## Contributors

The Commission consisted of five independent parts to which authors were assigned as lead authors or co-authors. NS was the lead author for Part 1. AK was the lead author for Part 2. DSi was the lead author for Part 3. SR was the lead author for Part 4. CG was the lead author for Part 5. Co-authors for each part are detailed in the appendix, and all authors contributed equally to the writing of their respective sections. All authors have approved the final versions.

## Declaration of interests

CUC reports personal fees from Alkermes, Allergan, Angelini, Boehringer Ingelheim, Bristol-Myers Squibb, Gerson Lehrman Group, Indivior, Intra-Cellular Therapies, Janssen, LB Pharma, Lundbeck, MedAvante-ProPhase, Medscape, Merck, Neurocrine Biosciences, Noven Pharmaceuticals, Otsuka Pharmaceutical, Pfizer, Rovi, Servier, Sunovion, Supernus, Takeda, and UpToDate, other fees from Boehringer-Ingelheim, LB Pharma, Lundbeck, Rovi, Sumitomo Dainippon, Supernus, and Teva, and grants from Janssen and Takeda, outside the submitted work. FG reports personal fees from Lundbeck, Otsuka Pharmaceutical, and Sunovion, and grants from Janssen, outside the submitted work. She has a family member with professional links to Lilly and GSK, including shares, and is funded in part by the National Institute for Health Research (NIHR) Biomedical Research Centre at South London and Maudsley NHS Foundation Trust and King's College London, the South London Collaboration for Leadership in Applied Health Research and Care funding scheme, and the Maudsley Charity. PDM is a member of a Janssen advisory board. DSh reports personal fees as a clinical advisor to the National Clinical Audit of Psychosis, and personal fees from the Wiley Blackwell publication *Promoting Recovery in Early Psychosis* (published in 2010) as a joint editor in receipt of royalties, outside the submitted work. He is an expert advisor to the Centre for Guidelines of the National Institute for Health and Care Excellence (NICE); a member of the current NICE guideline development group for rehabilitation in adults with complex psychosis and related severe mental health conditions; a board member of the National Collaborating Centre for Mental Health; and a clinical advisor (paid consultancy) to the National Clinical Audit of Psychosis. SBT reports a travel grant from the National Institute of Complementary Medicine for the 2017 International Society for Nutritional Psychiatry Research conference, outside the submitted work. JTo reports grants from Otsuka Pharmaceutical, outside

the submitted work. The views expressed in this Commission are those of the authors and not necessarily those of the institutions mentioned here. All other authors declare no competing interests.

#### Acknowledgments

We thank Melissa Eaton for assistance in preparing the tables and appendices, and Naila Dracup and Judy Wright (University of Leeds) for their assistance with systematic searches. This work was supported in part by the National Institute of Health Research (NIHR) using Official Development Assistance funding (Grant: 17/63/130: NIHR Global Health Research Group: Improving Outcomes in Mental and Physical Multimorbidity and Developing Research Capacity (IMPACT) in South Asia at the University of York). JF is supported by a Blackmores Institute Fellowship. NS is funded in part by the NIHR Collaboration for Leadership in Applied Health Research and Care Yorkshire and Humber (NIHR CLAHRC YH). DS is supported in part by an NHMRC Early Career Fellowship (APP111136). SR is supported by an NHMRC Early Career Fellowship (APP1123336). FG is funded in part by the NIHR Biomedical Research Centre at South London and Maudsley NHS Foundation Trust. FG is also supported by the Maudsley Charity, King's College London, and the South London Collaboration for Leadership in Applied Health Research and Care Funding. JS is supported by an NHMRC Clinical Research Fellowship (APP1125000). GT is supported by the NIHR Collaboration for Leadership in Applied Health Research and Care South London at King's College London NHS Foundation Trust, and the NIHR Asset Global Health Unit award. GT receives support from the National Institute of Mental Health of the National Institutes of Health under award number R01MH100470 (Cobalt study). GT is also supported by the UK Medical Research Council in relation to the Emilia (MR/S001255/1) and Indigo Partnership (MR/R023697/1) awards. JTo is supported by a NARSAD Young Investigator Grant from the Brain and Behavior Research Foundation. BS is supported by a Clinical Lectureship (ICA-CL-2017-03-001) jointly funded by Health Education England and NIHR. BS is part-funded by the NIHR Biomedical Research Centre at South London and Maudsley NHS Foundation Trust. BS is also supported by the Maudsley Charity, King's College London, and the NIHR South London Collaboration for Leadership in Applied Health Research and Care funding. The views expressed in this Commission are those of the authors and not necessarily those of the acknowledged institutions.

#### References

- 1 Thornicroft G. Premature death among people with mental illness. *BMJ* 2013; **346**: f2969.
- 2 Ødegard Ø. Mortality in Norwegian mental hospitals 1926–1941. *Acta Genet Stat Med* 1951; **2**: 141–73.
- 3 Hayes JF, Marston L, Walters K, King MB, Osborn DPJ. Mortality gap for people with bipolar disorder and schizophrenia: UK-based cohort study 2000–2014. *Br J Psychiatry* 2017; **211**: 175–81.
- 4 Hayes JF, Miles J, Walters K, King M, Osborn DPJ. A systematic review and meta-analysis of premature mortality in bipolar affective disorder. *Acta Psychiatr Scand* 2015; **131**: 417–25.
- 5 Hjorthøj C, Stürup AE, McGrath JJ, Nordentoft M. Years of potential life lost and life expectancy in schizophrenia: a systematic review and meta-analysis. *Lancet Psychiatry* 2017; **4**: 295–301.
- 6 Mathers BM, Degenhardt L, Bucello C, Lemon J, Wiessing L, Hickman M. Mortality among people who inject drugs: a systematic review and meta-analysis. *Bull World Health Organ* 2013; **91**: 102–23.
- 7 Cuijpers P, Vogelzangs N, Twisk J, Kleiboer A, Li J, Penninx BW. Is excess mortality higher in depressed men than in depressed women? A meta-analytic comparison. *J Affect Disord* 2014; **161**: 47–54.
- 8 Cuijpers P, Vogelzangs N, Twisk J, Kleiboer A, Li J, Penninx BW. Comprehensive meta-analysis of excess mortality in depression in the general community versus patients with specific illnesses. *Am J Psychiatry* 2014; **171**: 453–62.
- 9 Machado MO, Veronese N, Sanches M, et al. The association of depression and all-cause and cause-specific mortality: an umbrella review of systematic reviews and meta-analyses. *BMC Med* 2018; **16**: 112.
- 10 Kjør JNR, Biskin R, Vestergaard C, Munk-Jørgensen P. All-cause mortality of hospital-treated borderline personality disorder: a nationwide cohort study. *J Pers Disord* 2018; published online Oct 11. DOI:10.1521/pedi\_2018\_32\_403.
- 11 Roerecke M, Rehm J. Alcohol use disorders and mortality: a systematic review and meta-analysis. *Addiction* 2013; **108**: 1562–78.
- 12 Chesney E, Goodwin GM, Fazel S. Risks of all-cause and suicide mortality in mental disorders: a meta-review. *World Psychiatry* 2014; **13**: 153–60.
- 13 Walker ER, McGee RE, Druss BG. Mortality in mental disorders and global disease burden implications: a systematic review and meta-analysis. *JAMA Psychiatry* 2015; **72**: 334–41.
- 14 Correll CU, Solmi M, Veronese N, et al. Prevalence, incidence and mortality from cardiovascular disease in patients with pooled and specific severe mental illness: a large-scale meta-analysis of 3,211,768 patients and 113,383,368 controls. *World Psychiatry* 2017; **16**: 163–80.
- 15 Olfson M, Gerhard T, Huang C, Crystal S, Stroup TS. Premature mortality among adults with schizophrenia in the United States. *JAMA Psychiatry* 2015; **72**: 1172–81.
- 16 Chang CK, Hayes RD, Broadbent M, et al. All-cause mortality among people with serious mental illness (SMI), substance use disorders, and depressive disorders in southeast London: a cohort study. *BMC Psychiatry* 2010; **10**: 77.
- 17 Das-Munshi J, Chang CK, Dutta R, et al. Ethnicity and excess mortality in severe mental illness: a cohort study. *Lancet Psychiatry* 2017; **4**: 389–99.
- 18 Aldridge RW, Story A, Hwang SW, et al. Morbidity and mortality in homeless individuals, prisoners, sex workers, and individuals with substance use disorders in high-income countries: a systematic review and meta-analysis. *Lancet* 2018; **391**: 241–50.
- 19 Reilly S, Olier I, Planner C, et al. Inequalities in physical comorbidity: a longitudinal comparative cohort study of people with severe mental illness in the UK. *BMJ Open* 2015; **5**: e009010.
- 20 Thornicroft G. Physical health disparities and mental illness: the scandal of premature mortality. *Br J Psychiatry* 2011; **199**: 441–42.
- 21 Tanskanen A, Tiihonen J, Taipale H. Mortality in schizophrenia: 30-year nationwide follow-up study. *Acta Psychiatr Scand* 2018; **138**: 492–99.
- 22 Laursen TM, Plana-Ripoll O, Andersen PK, et al. Cause-specific life years lost among persons diagnosed with schizophrenia: is it getting better or worse? *Schizophr Res* 2018; published online Nov 13. DOI:10.1016/j.schres.2018.11.003.
- 23 Erlangsen A, Andersen PK, Toender A, Laursen TM, Nordentoft M, Canudas-Romo V. Cause-specific life-years lost in people with mental disorders: a nationwide, register-based cohort study. *Lancet Psychiatry* 2017; **4**: 937–45.
- 24 Gao YH, Zhao HS, Zhang FR, et al. The relationship between depression and asthma: a meta-analysis of prospective studies. *PLoS One* 2015; **10**: e0132424.
- 25 Jiang M, Qin P, Yang X. Comorbidity between depression and asthma via immune-inflammatory pathways: a meta-analysis. *J Affect Disord* 2014; **166**: 22–29.
- 26 Wu MK, Wang HY, Chen YW, Lin PY, Wu CK, Tseng PT. Significantly higher prevalence rate of asthma and bipolar disorder co-morbidity: a meta-analysis and review under PRISMA guidelines. *Medicine (Baltimore)* 2016; **95**: e3217.
- 27 Cortese S, Sun S, Zhang J, et al. Association between attention deficit hyperactivity disorder and asthma: a systematic review and meta-analysis and a Swedish population-based study. *Lancet Psychiatry* 2018; **5**: 717–26.
- 28 Zheng Z, Zhang L, Zhu T, Huang J, Qu Y, Mu D. Association between asthma and autism spectrum disorder: a meta-analysis. *PLoS One* 2016; **11**: e0156662.
- 29 Cullen AE, Holmes S, Pollak TA, et al. Associations between non-neurological autoimmune disorders and psychosis: a meta-analysis. *Biol Psychiatry* 2019; **85**: 35–48.
- 30 Bunker SJ, Colquhoun DM, Esler MD. Review: depression, social isolation, and certain life events are associated with the development of coronary heart disease. *Evid Based Med* 2003; **8**: 189.
- 31 Charlson FJ, Moran AE, Freedman G, et al. The contribution of major depression to the global burden of ischemic heart disease: a comparative risk assessment. *BMC Med* 2013; **11**: 250.
- 32 Frasure-Smith N, Lespérance F. Reflections on depression as a cardiac risk factor. *Psychosom Med* 2005; **67** (suppl 1): S19–25.

- 33 Gan Y, Gong Y, Tong X, et al. Depression and the risk of coronary heart disease: a meta-analysis of prospective cohort studies. *BMC Psychiatry* 2014; **14**: 371.
- 34 Jiang W, Krishnan R, O'Connor CM. Depression and heart disease: evidence of a link, and its therapeutic implications. *CNS Drugs* 2002; **16**: 111–27.
- 35 Lett HS, Blumenthal JA, Babyak MA, et al. Depression as a risk factor for coronary artery disease: evidence, mechanisms, and treatment. *Psychosom Med* 2004; **66**: 305–15.
- 36 Misteli GS, Stute P. Depression as a risk factor for acute coronary syndrome: a review. *Arch Gynecol Obstet* 2015; **291**: 1213–20.
- 37 Nicholson A, Kuper H, Hemingway H. Depression as an aetiological and prognostic factor in coronary heart disease: a meta-analysis of 6362 events among 146 538 participants in 54 observational studies. *Eur Heart J* 2006; **27**: 2763–74.
- 38 Rugulies R. Depression as a predictor for coronary heart disease. a review and meta-analysis. *Am J Prev Med* 2002; **23**: 51–61.
- 39 Shi S, Liu T, Liang J, Hu D, Yang B. The relationship between depression and risk of sudden cardiac death and arrhythmias: a meta-analysis. *Heart Rhythm* 2016; **1**: S502–03.
- 40 Wulsin LR. Is depression a major risk factor for coronary disease? A systematic review of the epidemiologic evidence. *Harv Rev Psychiatry* 2004; **12**: 79–93.
- 41 Wulsin LR, Singal BM. Do depressive symptoms increase the risk for the onset of coronary disease? A systematic quantitative review. *Psychosom Med* 2003; **65**: 201–10.
- 42 Meng L, Chen D, Yang Y, Zheng Y, Hui R. Depression increases the risk of hypertension incidence: a meta-analysis of prospective cohort studies. *J Hypertens* 2012; **30**: 842–51.
- 43 Barlinn K, Kepplinger J, Puetz V, Illigens BM, Bodechtel U, Siepmann T. Exploring the risk-factor association between depression and incident stroke: a systematic review and meta-analysis. *Neuropsychiatr Dis Treat* 2014; **11**: 1–14.
- 44 Li M, Zhang XW, Hou WS, Tang ZY. Impact of depression on incident stroke: a meta-analysis. *Int J Cardiol* 2015; **180**: 103–10.
- 45 Pan A, Sun Q, Okereke OI, Rexrode KM, Hu FB. Depression and risk of stroke morbidity and mortality: a meta-analysis and systematic review. *JAMA* 2011; **306**: 1241–49.
- 46 Emdin CA, Oduyayo A, Wong CX, Tran J, Hsiao AJ, Hunn BHM. Meta-analysis of anxiety as a risk factor for cardiovascular disease. *Am J Cardiol* 2016; **118**: 511–19.
- 47 Batelaan NM, Seldenrijk A, Bot M, van Balkom AJLM, Penninx BWJH. Anxiety and new onset of cardiovascular disease: critical review and meta-analysis. *Br J Psychiatry* 2016; **208**: 223–31.
- 48 Edmondson D, Kronish IM, Shaffer JA, Falzon L, Burg MM. Posttraumatic stress disorder and risk for coronary heart disease: a meta-analytic review. *Am Heart J* 2013; **166**: 806–14.
- 49 Pan Y, Cai W, Cheng Q, Dong W, An T, Yan J. Association between anxiety and hypertension: a systematic review and meta-analysis of epidemiological studies. *Neuropsychiatr Dis Treat* 2015; **11**: 1121–30.
- 50 Roest AM, Martens EJ, de Jonge P, Denollet J. Anxiety and risk of incident coronary heart disease: a meta-analysis. *J Am Coll Cardiol* 2010; **56**: 38–46.
- 51 Tully PJ, Turnbull DA, Beltrame J, et al. Panic disorder and incident coronary heart disease: a systematic review and meta-regression in 1131612 persons and 58111 cardiac events. *Psychol Med* 2015; **45**: 2909–20.
- 52 Kuper H, Marmot M, Hemingway H. Systematic review of prospective cohort studies of psychosocial factors in the etiology and prognosis of coronary heart disease. *Semin Vasc Med* 2002; **2**: 267–314.
- 53 Rutledge T, Hogan BE. A quantitative review of prospective evidence linking psychological factors with hypertension development. *Psychosom Med* 2002; **64**: 758–66.
- 54 Fan Z, Wu Y, Shen J, Ji T, Zhan R. Schizophrenia and the risk of cardiovascular diseases: a meta-analysis of thirteen cohort studies. *J Psychiatr Res* 2013; **47**: 1549–56.
- 55 Li M, Fan YL, Tang ZY, Cheng XS. Schizophrenia and risk of stroke: a meta-analysis of cohort studies. *Int J Cardiol* 2014; **173**: 588–90.
- 56 Prieto ML, Cuéllar-Barboza AB, Bobo WV, et al. Risk of myocardial infarction and stroke in bipolar disorder: a systematic review and exploratory meta-analysis. *Acta Psychiatr Scand* 2014; **130**: 342–53.
- 57 Ayerbe L, Forgnone I, Addo J, Siguero A, Gelati S, Ayis S. Hypertension risk and clinical care in patients with bipolar disorder or schizophrenia; a systematic review and meta-analysis. *J Affect Disord* 2018; **225**: 665–70.
- 58 Osborn DPJ, Wright CA, Levy G, King MB, Deo R, Nazareth I. Relative risk of diabetes, dyslipidaemia, hypertension and the metabolic syndrome in people with severe mental illnesses: systematic review and metaanalysis. *BMC Psychiatry* 2008; **8**: 84.
- 59 Jia Y, Li F, Liu YF, Zhao JP, Leng MM, Chen L. Depression and cancer risk: a systematic review and meta-analysis. *Public Health* 2017; **149**: 138–48.
- 60 Oerlemans MEJ, van den Akker M, Schuurman AG, Kellen E, Buntinx F. A meta-analysis on depression and subsequent cancer risk. *Clin Pract Epidemiol Ment Health* 2007; **3**: 29.
- 61 Pössel P, Adams E, Valentine JC. Depression as a risk factor for breast cancer: investigating methodological limitations in the literature. *Cancer Causes Control* 2012; **23**: 1223–29.
- 62 Sun HL, Dong XX, Cong YJ, et al. Depression and the risk of breast cancer: a meta-analysis of cohort studies. *Asian Pac J Cancer Prev* 2015; **16**: 3233–39.
- 63 Li H, Li J, Yu X, et al. The incidence rate of cancer in patients with schizophrenia: a meta-analysis of cohort studies. *Schizophr Res* 2018; **195**: 519–28.
- 64 Bushe CJ, Bradley AJ, Wildgust HJ, Hodgson RE. Schizophrenia and breast cancer incidence: a systematic review of clinical studies. *Schizophr Res* 2009; **114**: 6–16.
- 65 Catts VS, Catts SV, O'Toole BI, Frost ADJ. Cancer incidence in patients with schizophrenia and their first-degree relatives: a meta-analysis. *Acta Psychiatr Scand* 2008; **117**: 323–36.
- 66 Xu D, Chen G, Kong L, et al. Lower risk of liver cancer in patients with schizophrenia: a systematic review and meta-analysis of cohort studies. *Oncotarget* 2017; **8**: 102328–35.
- 67 Zhuo C, Triplett PT. Association of schizophrenia with the risk of breast cancer incidence: a meta-analysis. *JAMA Psychiatry* 2018; **75**: 363–69.
- 68 Catalá-López F, Suárez-Pinilla M, Suárez-Pinilla P, et al. Inverse and direct cancer comorbidity in people with central nervous system disorders: a meta-analysis of cancer incidence in 577,013 participants of 50 observational studies. *Psychother Psychosom* 2014; **83**: 89–105.
- 69 Hasan SS, Clavarino AM, Mamun AA, Doi SAR, Kairuz T. Population impact of depression either as a risk factor or consequence of type 2 diabetes in adults: a meta-analysis of longitudinal studies. *Asian J Psychiatr* 2013; **6**: 460–72.
- 70 Knol MJ, Twisk JWR, Beekman ATF, Heine RJ, Snoek FJ, Pouwer F. Depression as a risk factor for the onset of type 2 diabetes mellitus. A meta-analysis. *Diabetologia* 2006; **49**: 837–45.
- 71 Mezuk B, Eaton WW, Albrecht S, Golden SH. Depression and type 2 diabetes over the lifespan: a meta-analysis. *Diabetes Care* 2008; **31**: 2383–90.
- 72 Renn BN, Feliciano L, Segal DL. The bidirectional relationship of depression and diabetes: a systematic review. *Clin Psychol Rev* 2011; **31**: 1239–46.
- 73 Rotella F, Mannucci E. Depression as a risk factor for diabetes: a meta-analysis of longitudinal studies. *J Clin Psychiatry* 2013; **74**: 31–37.
- 74 Vancampfort D, Mitchell AJ, De Hert M, et al. Type 2 diabetes in patients with major depressive disorder: a meta-analysis of prevalence estimates and predictors. *Depress Anxiety* 2015; **32**: 763–73.
- 75 Yu M, Zhang X, Lu F, Fang L. Depression and risk for diabetes: a meta-analysis. *Can J Diabetes* 2015; **39**: 266–72.
- 76 Smith KJ, Deschênes SS, Schmitz N. Investigating the longitudinal association between diabetes and anxiety: a systematic review and meta-analysis. *Diabet Med* 2018; **35**: 677–93.
- 77 Stubbs B, Vancampfort D, De Hert M, Mitchell AJ. The prevalence and predictors of type two diabetes mellitus in people with schizophrenia: a systematic review and comparative meta-analysis. *Acta Psychiatr Scand* 2015; **132**: 144–57.
- 78 Mitchell AJ, Vancampfort D, De Hert M, Yu W, De Hert M. Is the prevalence of metabolic syndrome and metabolic abnormalities increased in early schizophrenia? A comparative meta-analysis of first episode, untreated and treated patients. *Schizophr Bull* 2013; **39**: 295–305.

- 79 Charles EF, Lambert CG, Kerner B. Bipolar disorder and diabetes mellitus: evidence for disease-modifying effects and treatment implications. *Int J Bipolar Disord* 2016; **4**: 13.
- 80 Vancampfort D, Mitchell AJ, De Hert M, et al. Prevalence and predictors of type 2 diabetes mellitus in people with bipolar disorder: a systematic review and meta-analysis. *J Clin Psychiatry* 2015c; **76**: 1490–99.
- 81 Vancampfort D, Mugisha J, Hallgren M, et al. The prevalence of diabetes mellitus type 2 in people with alcohol use disorders: a systematic review and large scale meta-analysis. *Psychiatry Res* 2016; **246**: 394–400.
- 82 Nieto-Martínez R, González-Rivas JP, Medina-Inojosa JR, Florez H. Are eating disorders risk factors for type 2 diabetes? A systematic review and meta-analysis. *Curr Diab Rep* 2017; **17**: 138.
- 83 Vancampfort D, Correll CU, Galling B, et al. Diabetes mellitus in people with schizophrenia, bipolar disorder and major depressive disorder: a systematic review and large scale meta-analysis. *World Psychiatry* 2016; **15**: 166–74.
- 84 Roberts E, Jones L, Blackman A, et al. The prevalence of diabetes mellitus and abnormal glucose metabolism in the inpatient psychiatric setting: a systematic review and meta-analysis. *Gen Hosp Psychiatry* 2017; **45**: 76–84.
- 85 Vancampfort D, Correll CU, Wampers M, et al. Metabolic syndrome and metabolic abnormalities in patients with major depressive disorder: a meta-analysis of prevalences and moderating variables. *Psychol Med* 2014; **44**: 2017–28.
- 86 Pan A, Keum N, Okereke OI, et al. Bidirectional association between depression and metabolic syndrome: a systematic review and meta-analysis of epidemiological studies. *Diabetes Care* 2012; **35**: 1171–80.
- 87 Tang F, Wang G, Lian Y. Association between anxiety and metabolic syndrome: a systematic review and meta-analysis of epidemiological studies. *Psychoneuroendocrinology* 2017; **77**: 112–21.
- 88 Bartoli F, Carrà G, Crocama C, Carretta D, Clerici M. Metabolic syndrome in people suffering from posttraumatic stress disorder: a systematic review and meta-analysis. *Metab Syndr Relat Disord* 2013; **11**: 301–08.
- 89 Rosenbaum S, Stubbs B, Ward PB, Steel Z, Lederman O, Vancampfort D. The prevalence and risk of metabolic syndrome and its components among people with posttraumatic stress disorder: a systematic review and meta-analysis. *Metabolism* 2015; **64**: 926–33.
- 90 Goldbacher EM, Matthews KA. Are psychological characteristics related to risk of the metabolic syndrome? A review of the literature. *Ann Behav Med* 2007; **34**: 240–52.
- 91 Mitchell AJ, Vancampfort D, Smeets K, van Winkel R, Yu W, De Hert M. Prevalence of metabolic syndrome and metabolic abnormalities in schizophrenia and related disorders: a systematic review and meta-analysis. *Schizophr Bull* 2013; **39**: 306–18.
- 92 Papanastasiou E. The prevalence and mechanisms of metabolic syndrome in schizophrenia: a review. *Ther Adv Psychopharmacol* 2013; **3**: 33–51.
- 93 Vancampfort D, Vansteelandt K, Correll CU, et al. Metabolic syndrome and metabolic abnormalities in bipolar disorder: a meta-analysis of prevalence rates and moderators. *Am J Psychiatry* 2013; **170**: 265–74.
- 94 Czepielewski L, Daruy Filho L, Brietzke E, Grassi-Oliveira R. Bipolar disorder and metabolic syndrome: a systematic review. *Br J Psychiatry* 2013; **35**: 88–93.
- 95 Morriss R, Mohammed FA. Metabolism, lifestyle and bipolar affective disorder. *J Psychopharmacol* 2005; **19** (suppl): 94–101.
- 96 Vancampfort D, Hallgren M, Mugisha J, et al. The prevalence of metabolic syndrome in alcohol use disorders: a systematic review and meta-analysis. *Alcohol Alcohol* 2016; **51**: 515–21.
- 97 Vancampfort D, Stubbs B, Mitchell AJ, et al. Risk of metabolic syndrome and its components in people with schizophrenia and related psychotic disorders, bipolar disorder and major depressive disorder: a systematic review and meta-analysis. *World Psychiatry* 2015; **14**: 339–47.
- 98 van den Berk-Clark C, Secret S, Walls J, et al. Association between posttraumatic stress disorder and lack of exercise, poor diet, obesity, and co-occurring smoking: a systematic review and meta-analysis. *Health Psychol* 2018; **37**: 407–16.
- 99 Bartoli F, Crocama C, Alamia A, et al. Posttraumatic stress disorder and risk of obesity: systematic review and meta-analysis. *J Clin Psychiatry* 2015; **76**: e1253–61.
- 100 Keck PE, McElroy SL. Bipolar disorder, obesity, and pharmacotherapy-associated weight gain. *J Clin Psychiatry* 2003; **64**: 1426–35.
- 101 Cortese S, Moreira-Maia CR, St Fleur D, Morcillo-Peñalver C, Rohde LA, Faraone SV. Association between ADHD and obesity: a systematic review and meta-analysis. *Am J Psychiatry* 2016; **173**: 34–43.
- 102 Cortese S, Angriman M, Maffei C, et al. Attention-deficit/hyperactivity disorder (ADHD) and obesity: a systematic review of the literature. *Crit Rev Food Sci Nutr* 2008; **48**: 524–37.
- 103 Nigg JT, Johnstone JM, Musser ED, Long HG, Willoughby MT, Shannon J. Attention-deficit/hyperactivity disorder (ADHD) and being overweight/obesity: new data and meta-analysis. *Clin Psychol Rev* 2016; **43**: 67–79.
- 104 Gerlach G, Loeber S, Herpertz S. Personality disorders and obesity: a systematic review. *Obes Rev* 2016; **17**: 691–723.
- 105 McElroy SL, Kotwal R, Malhotra S, Nelson EB, Keck PE, Nemeroff CB. Are mood disorders and obesity related? A review for the mental health professional. *J Clin Psychiatry* 2004; **65**: 634–51, quiz 730.
- 106 Wu Q, Liu J, Gallegos-Orozco JF, Hentz JG. Depression, fracture risk, and bone loss: a meta-analysis of cohort studies. *Osteoporos Int* 2010; **21**: 1627–35.
- 107 Stubbs B, De Hert M, Sepehry AA, et al. A meta-analysis of prevalence estimates and moderators of low bone mass in people with schizophrenia. *Acta Psychiatr Scand* 2014; **130**: 470–86.
- 108 Solmi M, Veronese N, Correll CU, et al. Bone mineral density, osteoporosis, and fractures among people with eating disorders: a systematic review and meta-analysis. *Acta Psychiatr Scand* 2016; **133**: 341–51.
- 109 Wang S, Mao S, Xiang D, Fang C. Association between depression and the subsequent risk of Parkinson's disease: a meta-analysis. *Prog Neuropsychopharmacol Biol Psychiatry* 2018; **86**: 186–92.
- 110 Euesden J, Breen G, Farmer A, McGuffin P, Lewis CM. The relationship between schizophrenia and rheumatoid arthritis revisited: genetic and epidemiological analyses. *Am J Med Genet B Neuropsychiatr Genet* 2015; **168B**: 81–88.
- 111 Ayano G, Tulu M, Haile K, et al. A systematic review and meta-analysis of gender difference in epidemiology of HIV, hepatitis B, and hepatitis C infections in people with severe mental illness. *Ann Gen Psychiatry* 2018; **17**: 16.
- 112 Campos LN, Guimarães MDC, Carmo RA, et al. HIV, syphilis, and hepatitis B and C prevalence among patients with mental illness: a review of the literature. *Cad Saude Publica* 2008; **24** (suppl 4): s607–20.
- 113 Hughes E, Bassi S, Gilbody S, Bland M, Martin F. Prevalence of HIV, hepatitis B, and hepatitis C in people with severe mental illness: a systematic review and meta-analysis. *Lancet Psychiatry* 2016; **3**: 40–48.
- 114 Novo-Veleiro I, Calle CL, Domínguez-Quibén S, Pastor I, Marcos M, Laso FJ. Prevalence of hepatitis C virus infection in alcoholic patients: cohort study and systematic review. *Alcohol Alcohol* 2013; **48**: 564–69.
- 115 Smith DJ, Combellick J, Jordan AE, Hagan H. Hepatitis C virus (HCV) disease progression in people who inject drugs (PWID): a systematic review and meta-analysis. *Int J Drug Policy* 2015; **26**: 911–21.
- 116 Fisher JC, Bang H, Kapiga SH. The association between HIV infection and alcohol use: a systematic review and meta-analysis of African studies. *Sex Transm Dis* 2007; **34**: 856–63.
- 117 Breuer E, Myer L, Struthers H, Joska JA. HIV/AIDS and mental health research in sub-Saharan Africa: a systematic review. *Afr J AIDS Res* 2011; **10**: 101–22.
- 118 Lönnroth K, Williams BG, Stadlin S, Jaramillo E, Dye C. Alcohol use as a risk factor for tuberculosis: a systematic review. *BMC Public Health* 2008; **8**: 289.
- 119 Leucht S, Burkard T, Henderson J, Maj M, Sartorius N. Physical illness and schizophrenia: a review of the literature. *Acta Psychiatr Scand* 2007; **116**: 317–33.
- 120 Oud MJ, Meyboom-de Jong B. Somatic diseases in patients with schizophrenia in general practice: their prevalence and health care. *BMC Fam Pract* 2009; **10**: 32.
- 121 Liu NH, Daumit GL, Dua T, et al. Excess mortality in persons with severe mental disorders: a multilevel intervention framework and priorities for clinical practice, policy and research agendas. *World Psychiatry* 2017; **16**: 30–40.

- 122 Vigo D, Thornicroft G, Atun R. Estimating the true global burden of mental illness. *Lancet Psychiatry* 2016; 3: 171–78.
- 123 Public Health England. Severe mental illness (SMI) and physical health inequalities: briefing. 2018. <https://www.gov.uk/government/publications/severe-mental-illness-smi-physical-health-inequalities/severe-mental-illness-and-physical-health-inequalities-briefing> (accessed Dec 1, 2018).
- 124 Sullivan LE, Fiellin DA, O'Connor PG. The prevalence and impact of alcohol problems in major depression: a systematic review. *Am J Med* 2005; 118: 330–41.
- 125 Weinberger AH, Kashan RS, Shpigel DM, et al. Depression and cigarette smoking behavior: a critical review of population-based studies. *Am J Drug Alcohol Abuse* 2017; 43: 416–31.
- 126 Vancampfort D, Firth J, Schuch FB, et al. Sedentary behavior and physical activity levels in people with schizophrenia, bipolar disorder and major depressive disorder: a global systematic review and meta-analysis. *World Psychiatry* 2017; 16: 308–15.
- 127 Schuch F, Vancampfort D, Firth J, et al. Physical activity and sedentary behavior in people with major depressive disorder: a systematic review and meta-analysis. *J Affect Disord* 2017; 210: 139–50.
- 128 Firth J, Stubbs B, Teasdale SB, et al. Diet as a hot topic in psychiatry: a population-scale study of nutritional intake and inflammatory potential in severe mental illness. *World Psychiatry* 2018; 17: 365–67.
- 129 Baglioni C, Nanovska S, Regen W, et al. Sleep and mental disorders: a meta-analysis of polysomnographic research. *Psychol Bull* 2016; 142: 969–90.
- 130 Regier DA, Farmer ME, Rae DS, et al. Comorbidity of mental disorders with alcohol and other drug abuse. Results from the Epidemiologic Catchment Area (ECA) Study. *JAMA* 1990; 264: 2511–18.
- 131 Jiang F, Li S, Pan L, Zhang N, Jia C. Association of anxiety disorders with the risk of smoking behaviors: a meta-analysis of prospective observational studies. *Drug Alcohol Depend* 2014; 145: 69–76.
- 132 Goodwin RD. Association between physical activity and mental disorders among adults in the United States. *Prev Med* 2003; 36: 698–703.
- 133 Teychenne M, Costigan SA, Parker K. The association between sedentary behaviour and risk of anxiety: a systematic review. *BMC Public Health* 2015; 15: 513.
- 134 Benca RM, Obermeyer WH, Thisted RA, Gillin JC. Sleep and psychiatric disorders. A meta-analysis. *Arch Gen Psychiatry* 1992; 49: 651–68, discussion 669–70.
- 135 Díaz-Román A, Perestelo-Pérez L, Buela-Casal G. Sleep in obsessive-compulsive disorder: a systematic review and meta-analysis. *Sleep Med* 2015; 16: 1049–55.
- 136 Di Florio A, Craddock N, van den Bree M. Alcohol misuse in bipolar disorder. A systematic review and meta-analysis of comorbidity rates. *Eur Psychiatry* 2014; 29: 117–24.
- 137 Jackson JG, Diaz FJ, Lopez L, de Leon J. A combined analysis of worldwide studies demonstrates an association between bipolar disorder and tobacco smoking behaviors in adults. *Bipolar Disord* 2015; 17: 575–97.
- 138 Teasdale SB, Ward PB, Samaras K, et al. Dietary intake of people with severe mental illness: systematic review and meta-analysis. *Br J Psychiatry* 2019; published online Feb 20. DOI:10.1192/bjp.2019.20.
- 139 Ng TH, Chung KF, Ho FY, Yeung WF, Yung KP, Lam TH. Sleep-wake disturbance in interepisode bipolar disorder and high-risk individuals: a systematic review and meta-analysis. *Sleep Med Rev* 2015; 20: 46–58.
- 140 Koskinen J, Löhönen J, Koponen H, Isohanni M, Miettunen J. Prevalence of alcohol use disorders in schizophrenia: a systematic review and meta-analysis. *Acta Psychiatr Scand* 2009; 120: 85–96.
- 141 de Leon J, Diaz FJ. A meta-analysis of worldwide studies demonstrates an association between schizophrenia and tobacco smoking behaviors. *Schizophr Res* 2005; 76: 135–57.
- 142 Stubbs B, Williams J, Gaughran F, Craig T. How sedentary are people with psychosis? A systematic review and meta-analysis. *Schizophr Res* 2016; 171: 103–09.
- 143 Wisdom JP, Manuel JI. Prevalence of substance use in people with first-episode psychosis. *J Dual Diagn* 2011; 7: 39–49.
- 144 Myles N, Newall HD, Curtis J, Nielsens O, Shiers D, Large M. Tobacco use before, at, and after first-episode psychosis: a systematic meta-analysis. *J Clin Psychiatry* 2012; 73: 468–75.
- 145 Debell F, Fear NT, Head M, et al. A systematic review of the comorbidity between PTSD and alcohol misuse. *Soc Psychiatry Psychiatr Epidemiol* 2014; 49: 1401–25.
- 146 Janssen EM, McGinty EE, Azrin ST, Juliano-Bult D, Daumit GL. Review of the evidence: prevalence of medical conditions in the United States population with serious mental illness. *Gen Hosp Psychiatry* 2015; 37: 199–222.
- 147 Rosenberg SD, Goodman LA, Osher FC, et al. Prevalence of HIV, hepatitis B, and hepatitis C in people with severe mental illness. *Am J Public Health* 2001; 91: 31–37.
- 148 Fekadu A, Medhin G, Kebede D, et al. Excess mortality in severe mental illness: 10-year population-based cohort study in rural Ethiopia. *Br J Psychiatry* 2015; 206: 289–96.
- 149 WHO. Helping people with severe mental disorders live longer and healthier lives: policy brief. Geneva: World Health Organization, 2017.
- 150 Stubbs B, Koyanagi A, Veronese N, et al. Physical multimorbidity and psychosis: comprehensive cross sectional analysis including 242,952 people across 48 low- and middle-income countries. *BMC Med* 2016; 14: 189.
- 151 Stubbs B, Vancampfort D, Veronese N, et al. Depression and physical health multimorbidity: primary data and country-wide meta-analysis of population data from 190 593 people across 43 low- and middle-income countries. *Psychol Med* 2017; 47: 2107–17.
- 152 Vancampfort D, Koyanagi A, Hallgren M, Probst M, Stubbs B. The relationship between chronic physical conditions, multimorbidity and anxiety in the general population: a global perspective across 42 countries. *Gen Hosp Psychiatry* 2017; 45: 1–6.
- 153 MacLean RR, Sofuoglu M, Rosenheck R. Tobacco and alcohol use disorders: evaluating multimorbidity. *Addict Behav* 2018; 78: 59–66.
- 154 Lambert M, Ruppelt F, Siem A-K, et al. Comorbidity of chronic somatic diseases in patients with psychotic disorders and their influence on 4-year outcomes of integrated care treatment (ACCESS II study). *Schizophr Res* 2018; 193: 377–83.
- 155 Barnett K, Mercer SW, Norbury M, Watt G, Wyke S, Guthrie B. Epidemiology of multimorbidity and implications for health care, research, and medical education: a cross-sectional study. *Lancet* 2012; 380: 37–43.
- 156 The Lancet. Making more of multimorbidity: an emerging priority. *Lancet* 2018; 391: 1637.
- 157 Perrin NE, Davies MJ, Robertson N, Snoek FJ, Khunti K. The prevalence of diabetes-specific emotional distress in people with type 2 diabetes: a systematic review and meta-analysis. *Diabet Med* 2017; 34: 1508–20.
- 158 Balhara YPS. Diabetes and psychiatric disorders. *Indian J Endocrinol Metab* 2011; 15: 274–83.
- 159 Sorsdahl K, Sewpaul R, Evans M, Naidoo P, Myers B, Stein DJ. The association between psychological distress, alcohol use and physical non-communicable diseases in a nationally representative sample of South Africans. *J Health Psychol* 2018; 23: 618–28.
- 160 Rajan TM, Menon V. Psychiatric disorders and obesity: a review of association studies. *J Postgrad Med* 2017; 63: 182–90.
- 161 Wang J, Lloyd-Evans B, Giacco D, et al. Social isolation in mental health: a conceptual and methodological review. *Soc Psychiatry Psychiatr Epidemiol* 2017; 52: 1451–61.
- 162 Wilmot EG, Edwardson CL, Achana FA, et al. Sedentary time in adults and the association with diabetes, cardiovascular disease and death: systematic review and meta-analysis. *Diabetologia* 2012; 55: 2895–905.
- 163 Manu P, Khan S, Radhakrishnan R, Russ MJ, Kane JM, Correll CU. Body mass index identified as an independent predictor of psychiatric readmission. *J Clin Psychiatry* 2014; 75: e573–77.
- 164 Godin O, Leboyer M, Schürhoff F, et al, and the FACE-SZ (FondaMental Academic Centers of Expertise for Schizophrenia) Group. Metabolic syndrome and illness severity predict relapse at 1-year follow-up in schizophrenia: the FACE-SZ cohort. *J Clin Psychiatry* 2018; 79: 17m12007.
- 165 Najjar S, Pearlman DM, Alper K, Najjar A, Devinsky O. Neuroinflammation and psychiatric illness. *J Neuroinflammation* 2013; 10: 43.

- 166 Serafini G, Pompili M, Seretti ME, et al. The role of inflammatory cytokines in suicidal behavior: a systematic review. *Eur Neuropsychopharmacol* 2013; **23**: 1672–86.
- 167 Šprah L, Dernovšek MZ, Wahlbeck K, Haaramo P. Psychiatric readmissions and their association with physical comorbidity: a systematic literature review. *BMC Psychiatry* 2017; **17**: 2.
- 168 Jansen L, van Schijndel M, van Waarde J, van Busschbach J. Health-economic outcomes in hospital patients with medical-psychiatric comorbidity: a systematic review and meta-analysis. *PLoS One* 2018; **13**: e0194029.
- 169 Greenberg PE, Fournier AA, Sisitsky T, Pike CT, Kessler RC. The economic burden of adults with major depressive disorder in the United States (2005 and 2010). *J Clin Psychiatry* 2015; **76**: 155–62.
- 170 Bryant-Comstock L, Stender M, Devercelli G. Health care utilization and costs among privately insured patients with bipolar I disorder. *Bipolar Disord* 2002; **4**: 398–405.
- 171 Centorrino F, Mark TL, Talamo A, Oh K, Chang J. Health and economic burden of metabolic comorbidity among individuals with bipolar disorder. *J Clin Psychopharmacol* 2009; **29**: 595–600.
- 172 Murphy SM, Edwards RT, Williams N, et al. An evaluation of the effectiveness and cost effectiveness of the National Exercise Referral Scheme in Wales, UK: a randomised controlled trial of a public health policy initiative. *J Epidemiol Community Health* 2012; **66**: 745–53.
- 173 Camacho EM, Davies LM, Hann M, et al. Long-term clinical and cost-effectiveness of collaborative care (versus usual care) for people with mental-physical multimorbidity: cluster-randomised trial. *Br J Psychiatry* 2018; **213**: 456–63.
- 174 Osborn D, Burton A, Hunter R, et al. Clinical and cost-effectiveness of an intervention for reducing cholesterol and cardiovascular risk for people with severe mental illness in English primary care: a cluster randomised controlled trial. *Lancet Psychiatry* 2018; **5**: 145–54.
- 175 Vancampfort D, Rosenbaum S, Ward PB, et al. Type 2 diabetes among people with posttraumatic stress disorder: systematic review and meta-analysis. *Psychosom Med* 2016; **78**: 465–73.
- 176 Vallecillo G, Robles MJ, Torrens M, et al. Metabolic syndrome among individuals with heroin use disorders on methadone therapy: prevalence, characteristics, and related factors. *Subst Abuse* 2018; **39**: 46–51.
- 177 Kahl KG, Greggersen W, Schweiger U, et al. Prevalence of the metabolic syndrome in patients with borderline personality disorder: results from a cross-sectional study. *Eur Arch Psychiatry Clin Neurosci* 2013; **263**: 205–13.
- 178 Mendenhall E, Kohrt BA, Norris SA, Ndeti D, Prabhakaran D. Non-communicable disease syndemics: poverty, depression, and diabetes among low-income populations. *Lancet* 2017; **389**: 951–63.
- 179 Thornicroft G, Ahuja S, Barber S, et al. Integrated care for people with long-term mental and physical health conditions in low-income and middle-income countries. *Lancet Psychiatry* 2019; **6**: 174–86.
- 180 Ösby U, Westman J, Hällgren J, Gissler M. Mortality trends in cardiovascular causes in schizophrenia, bipolar and unipolar mood disorder in Sweden 1987–2010. *Eur J Public Health* 2016; **26**: 867–71.
- 181 Croudace TJ, Kayne R, Jones PB, Harrison GL. Non-linear relationship between an index of social deprivation, psychiatric admission prevalence and the incidence of psychosis. *Psychol Med* 2000; **30**: 177–85.
- 182 Marmot M. Social determinants of health inequalities. *Lancet* 2005; **365**: 1099–104.
- 183 Fountaine RJ, Taylor AE, Mancuso JP, et al. Increased food intake and energy expenditure following administration of olanzapine to healthy men. *Obesity (Silver Spring)* 2010; **18**: 1646–51.
- 184 Lindberg N, Virkkunen M, Tani P, et al. Effect of a single-dose of olanzapine on sleep in healthy females and males. *Int Clin Psychopharmacol* 2002; **17**: 177–84.
- 185 de Bruijn ER, Sabbe BG, Hulstijn W, Ruigt GS, Verkes RJ. Effects of antipsychotic and antidepressant drugs on action monitoring in healthy volunteers. *Brain Res* 2006; **1105**: 122–29.
- 186 Morrens M, Wezenberg E, Verkes RJ, Hulstijn W, Ruigt GS, Sabbe BG. Psychomotor and memory effects of haloperidol, olanzapine, and paroxetine in healthy subjects after short-term administration. *J Clin Psychopharmacol* 2007; **27**: 15–21.
- 187 Barnes TR, Bhatti SF, Adroer R, Paton C. Screening for the metabolic side effects of antipsychotic medication: findings of a 6-year quality improvement programme in the UK. *BMJ Open* 2015; **5**: e007633.
- 188 Cooper SJ, Reynolds GP, Barnes T, et al. BAP guidelines on the management of weight gain, metabolic disturbances and cardiovascular risk associated with psychosis and antipsychotic drug treatment. *J Psychopharmacol* 2016; **30**: 717–48.
- 189 De Hert M, Dekker JM, Wood D, Kahl KG, Holt RI, Möller H-J. Cardiovascular disease and diabetes in people with severe mental illness position statement from the European Psychiatric Association (EPA), supported by the European Association for the Study of Diabetes (EASD) and the European Society of Cardiology (ESC). *Eur Psychiatry* 2009; **24**: 412–24.
- 190 Gates J, Killackey E, Phillips L, Álvarez-Jiménez M. Mental health starts with physical health: current status and future directions of non-pharmacological interventions to improve physical health in first-episode psychosis. *Lancet Psychiatry* 2015; **2**: 726–42.
- 191 Carney R, Cotter J, Bradshaw T, Firth J, Yung AR. Cardiometabolic risk factors in young people at ultra-high risk for psychosis: a systematic review and meta-analysis. *Schizophr Res* 2016; **170**: 290–300.
- 192 Pillinger T, Beck K, Gobjila C, Donocik J, Jauhar S, Howes OD. Impaired glucose homeostasis in first-episode schizophrenia: a systematic review and meta-analysis. *JAMA Psychiatry* 2017; **74**: 261–69.
- 193 Curtis J, Watkins A, Rosenbaum S, et al. Evaluating an individualized lifestyle and life skills intervention to prevent antipsychotic-induced weight gain in first-episode psychosis. *Early Interv Psychiatry* 2016; **10**: 267–76.
- 194 Stubbs B, Vancampfort D, Firth J, et al. Association between depression and smoking: a global perspective from 48 low- and middle-income countries. *J Psychiatr Res* 2018; **103**: 142–49.
- 195 Stubbs B, Koyanagi A, Schuch FB, et al. Physical activity and depression: a large cross-sectional, population-based study across 36 low- and middle-income countries. *Acta Psychiatr Scand* 2016; **134**: 546–56.
- 196 Stubbs B, Vancampfort D, Firth J, et al. Relationship between sedentary behavior and depression: a mediation analysis of influential factors across the lifespan among 42,469 people in low- and middle-income countries. *J Affect Disord* 2018; **229**: 231–38.
- 197 Stubbs B, Koyanagi A, Hallgren M, et al. Physical activity and anxiety: a perspective from the World Health Survey. *J Affect Disord* 2017; **208**: 545–52.
- 198 Vancampfort D, Stubbs B, Herring MP, Hallgren M, Koyanagi A. Sedentary behavior and anxiety: association and influential factors among 42,469 community-dwelling adults in six low- and middle-income countries. *Gen Hosp Psychiatry* 2018; **50**: 26–32.
- 199 Stubbs B, Koyanagi A, Schuch F, et al. Physical activity levels and psychosis: a mediation analysis of factors influencing physical activity target achievement among 204,186 people across 46 low- and middle-income countries. *Schizophr Bull* 2017; **43**: 536–45.
- 200 Malik VS, Willett WC, Hu FB. Global obesity: trends, risk factors and policy implications. *Nat Rev Endocrinol* 2013; **9**: 13–27.
- 201 Stuckler D, McKee M, Ebrahim S, Basu S. Manufacturing epidemics: the role of global producers in increased consumption of unhealthy commodities including processed foods, alcohol, and tobacco. *PLoS Med* 2012; **9**: e1001235.
- 202 Stuckler D, Nestle M. Big food, food systems, and global health. *PLoS Med* 2012; **9**: e1001242.
- 203 Cunningham K, Martinez DA, Scott-Sheldon LAJ, Carey KB, Carey MP, and the MASH Research Team. Alcohol use and sexual risk behaviors among adolescents with psychiatric disorders: a systematic review and meta-analysis. *J Child Adolesc Subst Abuse* 2017; **26**: 353–66.
- 204 NHS England. CCG data collection for people with severe mental illness receiving a full physical health check and follow-up interventions in primary care: technical guidance. London: National Health Service England, 2018.
- 205 Firth J, Stubbs B, Vancampfort D, et al. The validity and value of self-reported physical activity and accelerometry in people with schizophrenia: a population-scale study of the UK Biobank. *Schizophr Bull* 2018; **44**: 1293–300.



- 206 Naslund JA, Aschbrenner KA. Digital technology for health promotion: opportunities to address excess mortality in persons living with severe mental disorders. *Evid Based Ment Health* 2019; **22**: 17–22.
- 207 Hamer M, Stamatakis E, Steptoe A. Psychiatric hospital admissions, behavioral risk factors, and all-cause mortality: the Scottish health survey. *Arch Intern Med* 2008; **168**: 2474–79.
- 208 Druss BG, Rosenheck RA. Mental disorders and access to medical care in the United States. *Am J Psychiatry* 1998; **155**: 1775–77.
- 209 Burns T, Cohen A. Item-of-service payments for general practitioner care of severely mentally ill persons: does the money matter? *Br J Gen Pract* 1998; **48**: 1415–16.
- 210 Hippisley-Cox J, Parker C, Coupland CA, Vinogradova Y. Inequalities in the primary care of coronary heart disease patients with serious mental health problems: a cross-sectional study. *Heart* 2007; **93**: 1256–62.
- 211 Howard LM, Barley EA, Davies E, et al. Cancer diagnosis in people with severe mental illness: practical and ethical issues. *Lancet Oncol* 2010; **11**: 797–804.
- 212 Kisely S, Ehrlich C, Kendall E, Lawrence D. Using avoidable admissions to measure quality of care for cardiometabolic and other physical comorbidities of psychiatric disorders: a population-based, record-linkage analysis. *Can J Psychiatry* 2015; **60**: 497–506.
- 213 Kisely S, Baghaie H, Laloo R, Siskind D, Johnson NW. A systematic review and meta-analysis of the association between poor oral health and severe mental illness. *Psychosom Med* 2015; **77**: 83–92.
- 214 Kisely S, Sawyer E, Siskind D, Laloo R. The oral health of people with anxiety and depressive disorders: a systematic review and meta-analysis. *J Affect Disord* 2016; **200**: 119–32.
- 215 Robson D, Gray R. Serious mental illness and physical health problems: a discussion paper. *Int J Nurs Stud* 2007; **44**: 457–66.
- 216 Lawrence DM, Holman CD, Jablensky AV, Hobbs MS. Death rate from ischaemic heart disease in Western Australian psychiatric patients 1980–1998. *Br J Psychiatry* 2003; **182**: 31–36.
- 217 Kisely S, Campbell LA, Wang Y. Treatment of ischaemic heart disease and stroke in individuals with psychosis under universal healthcare. *Br J Psychiatry* 2009; **195**: 545–50.
- 218 Laursen TM, Nordentoft M. Heart disease treatment and mortality in schizophrenia and bipolar disorder: changes in the Danish population between 1994 and 2006. *J Psychiatr Res* 2011; **45**: 29–35.
- 219 Kisely S, Crowe E, Lawrence D. Cancer-related mortality in people with mental illness. *JAMA Psychiatry* 2013; **70**: 209–17.
- 220 Lawrence D, Holman CD, Jablensky AV, Threlfall TJ, Fuller SA. Excess cancer mortality in Western Australian psychiatric patients due to higher case fatality rates. *Acta Psychiatr Scand* 2000; **101**: 382–88.
- 221 Kisely S, Sadek J, MacKenzie A, Lawrence D, Campbell LA. Excess cancer mortality in psychiatric patients. *Can J Psychiatry* 2008; **53**: 753–61.
- 222 Tuesley KM, Jordan SJ, Siskind DJ, Kendall BJ, Kisely S. Colorectal, cervical and prostate cancer screening in Australians with severe mental illness: retrospective nation-wide cohort study. *Aust N Z J Psychiatry* 2018; published online Dec 2. DOI:10.1177/0004867418814945.
- 223 Kisely S, Forsyth S, Lawrence D. Why do psychiatric patients have higher cancer mortality rates when cancer incidence is the same or lower? *Aust N Z J Psychiatry* 2016; **50**: 254–63.
- 224 Royal Australian and New Zealand College of Psychiatrists. Keeping body and mind together: improving the physical health and life expectancy of people with serious mental illness. 2015. <https://www.ranzcp.org/Files/Publications/RANZCP-Keeping-body-and-mind-together.aspx> (accessed Dec 1, 2018).
- 225 Viron MJ, Stern TA. The impact of serious mental illness on health and healthcare. *Psychosomatics* 2010; **51**: 458–65.
- 226 Ayerbe L, Forgnone I, Foguet-Boreu Q, González E, Addo J, Ayis S. Disparities in the management of cardiovascular risk factors in patients with psychiatric disorders: a systematic review and meta-analysis. *Psychol Med* 2018; **48**: 2693–701.
- 227 Kugathasan P, Horsdal HT, Aagaard J, Jensen SE, Laursen TM, Nielsen RE. Association of secondary preventive cardiovascular treatment after myocardial infarction with mortality among patients with schizophrenia. *JAMA Psychiatry* 2018; **75**: 1234–40.
- 228 Gorczynski P, Firth J, Stubbs B, Rosenbaum S, Vancampfort D. Are people with schizophrenia adherent to diabetes medication? A comparative meta-analysis. *Psychiatry Res* 2017; **250**: 17–24.
- 229 Sartorius N. Physical illness in people with mental disorders. *World Psychiatry* 2007; **6**: 3–4.
- 230 Saxena S, Maj M. Physical health of people with severe mental disorders: leave no one behind. *World Psychiatry* 2017; **16**: 1–2.
- 231 Leucht S, Leucht C, Huhn M, et al. Sixty years of placebo-controlled antipsychotic drug trials in acute schizophrenia: systematic review, Bayesian meta-analysis, and meta-regression of efficacy predictors. *Am J Psychiatry* 2017; **174**: 927–42.
- 232 Leucht S, Tardy M, Komossa K, et al. Antipsychotic drugs versus placebo for relapse prevention in schizophrenia: a systematic review and meta-analysis. *Lancet* 2012; **379**: 2063–71.
- 233 Bobrovitz N, Heneghan C, Onakpoya I, et al. Medications that reduce emergency hospital admissions: an overview of systematic reviews and prioritisation of treatments. *BMC Med* 2018; **16**: 115.
- 234 Taipale H, Mehtala J, Tanskanen A, Tiihonen J. Comparative effectiveness of antipsychotic drugs for rehospitalization in schizophrenia: a nationwide study with 20-year follow-up. *Schizophr Bull* 2018; **44**: 1381–87.
- 235 Tiihonen J, Mittendorfer-Rutz E, Majak M, et al. Real-world effectiveness of antipsychotic treatments in a nationwide cohort of 29 823 patients with schizophrenia. *JAMA Psychiatry* 2017; **74**: 686–93.
- 236 Torniainen M, Mittendorfer-Rutz E, Tanskanen A, et al. Antipsychotic treatment and mortality in schizophrenia. *Schizophr Bull* 2015; **41**: 656–63.
- 237 Lindström L, Lindström E, Nilsson M, Höistad M. Maintenance therapy with second generation antipsychotics for bipolar disorder: a systematic review and meta-analysis. *J Affect Disord* 2017; **213**: 138–50.
- 238 Spielmans GI, Berman MI, Linardatos E, Rosenlicht NZ, Perry A, Tsai AC. Adjunctive atypical antipsychotic treatment for major depressive disorder: a meta-analysis of depression, quality of life, and safety outcomes. *PLoS Med* 2013; **10**: e1001403.
- 239 Angermeyer MC, Holzinger A, Matschinger H. Quality of life: what it means to me. Results of a survey among schizophrenic patients. *Psychiatr Prax* 1999; **26**: 56–60 (in German).
- 240 Briggs A, Wild D, Lees M, et al. Impact of schizophrenia and schizophrenia treatment-related adverse events on quality of life: direct utility elicitation. *Health Qual Life Outcomes* 2008; **6**: 105.
- 241 McIntyre RS. Understanding needs, interactions, treatment, and expectations among individuals affected by bipolar disorder or schizophrenia: the UNITE global survey. *J Clin Psychiatry* 2009; **70** (suppl 3): 5–11.
- 242 Young SJ, Praskova A, Hayward N, Patterson S. Attending to physical health in mental health services in Australia: a qualitative study of service users' experiences and expectations. *Health Soc Care Community* 2017; **25**: 602–11.
- 243 Mayfield K, Siskind D, Winckel K, et al. Glucagon-like peptide-1 agonists combating clozapine-associated obesity and diabetes. *J Psychopharmacol* 2016; **30**: 227–36.
- 244 Leucht S, Cipriani A, Spineli L, et al. Comparative efficacy and tolerability of 15 antipsychotic drugs in schizophrenia: a multiple-treatments meta-analysis. *Lancet* 2013; **382**: 951–62.
- 245 Roerig JL, Steffen KJ, Mitchell JE. Atypical antipsychotic-induced weight gain: insights into mechanisms of action. *CNS Drugs* 2011; **25**: 1035–59.
- 246 Peuskens J, Pani L, Detraux J, De Hert M. The effects of novel and newly approved antipsychotics on serum prolactin levels: a comprehensive review. *CNS Drugs* 2014; **28**: 421–53.
- 247 Knegtering H, van der Moolen AE, Castelein S, Kluiters H, van den Bosch RJ. What are the effects of antipsychotics on sexual dysfunctions and endocrine functioning? *Psychoneuroendocrinology* 2003; **28** (suppl 2): 109–23.
- 248 Peuskens J, Sienaert P, De Hert M. Sexual dysfunction: the unspoken side effect of antipsychotics. *Eur Psychiatry* 1998; **13**: 238–30s.
- 249 De Hert M, Detraux J, Stubbs B. Relationship between antipsychotic medication, serum prolactin levels and osteoporosis/osteoporotic fractures in patients with schizophrenia: a critical literature review. *Expert Opin Drug Saf* 2016; **15**: 809–23.
- 250 Sykes DA, Moore H, Stott L, et al. Extrapyramidal side effects of antipsychotics are linked to their association kinetics at dopamine D<sub>2</sub> receptors. *Nat Commun* 2017; **8**: 763.

- 251 Carbon M, Kane JM, Leucht S, Correll CU. Tardive dyskinesia risk with first- and second-generation antipsychotics in comparative randomized controlled trials: a meta-analysis. *World Psychiatry* 2018; **17**: 330–40.
- 252 Strawn JR, Keck PE Jr, Caroff SN. Neuroleptic malignant syndrome. *Am J Psychiatry* 2007; **164**: 870–76.
- 253 Solmi M, Murru A, Pacchiarotti I, et al. Safety, tolerability, and risks associated with first- and second-generation antipsychotics: a state-of-the-art clinical review. *Ther Clin Risk Manag* 2017; **13**: 757–77.
- 254 Nishtala PS, Salahudeen MS, Hilmer SN. Anticholinergics: theoretical and clinical overview. *Expert Opin Drug Saf* 2016; **15**: 753–68.
- 255 Howes OD, McCutcheon R, Agid O, et al. Treatment-resistant schizophrenia: treatment response and resistance in psychosis (TRRIP) working group consensus guidelines on diagnosis and terminology. *Am J Psychiatry* 2017; **174**: 216–29.
- 256 Siskind D, McCartney L, Goldschlager R, Kisely S. Clozapine v. first- and second-generation antipsychotics in treatment-refractory schizophrenia: systematic review and meta-analysis. *Br J Psychiatry* 2016; **209**: 385–92.
- 257 Land R, Siskind D, McArdle P, Kisely S, Winckel K, Hollingworth SA. The impact of clozapine on hospital use: a systematic review and meta-analysis. *Acta Psychiatr Scand* 2017; **135**: 296–309.
- 258 Myles N, Myles H, Xia S, et al. Meta-analysis examining the epidemiology of clozapine-associated neutropenia. *Acta Psychiatr Scand* 2018; **138**: 101–09.
- 259 Rohde C, Polwiartek C, Kragholm K, Ebdrup BH, Siskind D, Nielsen J. Adverse cardiac events in out-patients initiating clozapine treatment: a nationwide register-based study. *Acta Psychiatr Scand* 2018; **137**: 47–53.
- 260 Ronaldson KJ, Fitzgerald PB, McNeil JJ. Clozapine-induced myocarditis, a widely overlooked adverse reaction. *Acta Psychiatr Scand* 2015; **132**: 231–40.
- 261 Alawami M, Wasywich C, Cicovic A, Kenedi C. A systematic review of clozapine induced cardiomyopathy. *Int J Cardiol* 2014; **176**: 315–20.
- 262 Nielsen J, Damkier P, Lublin H, Taylor D. Optimizing clozapine treatment. *Acta Psychiatr Scand* 2011; **123**: 411–22.
- 263 Geddes JR, Burgess S, Hawton K, Jamison K, Goodwin GM. Long-term lithium therapy for bipolar disorder: systematic review and meta-analysis of randomized controlled trials. *Am J Psychiatry* 2004; **161**: 217–22.
- 264 Siskind DJ, Lee M, Ravindran A, et al. Augmentation strategies for clozapine refractory schizophrenia: a systematic review and meta-analysis. *Aust N Z J Psychiatry* 2018; **52**: 751–67.
- 265 Correll CU, Rubio JM, Inczedy-Farkas G, Birnbaum ML, Kane JM, Leucht S. Efficacy of 42 pharmacologic cotreatment strategies added to antipsychotic monotherapy in schizophrenia: systematic overview and quality appraisal of the meta-analytic evidence. *JAMA Psychiatry* 2017; **74**: 675–84.
- 266 Vestergaard P, Poulstrup I, Schou M. Prospective studies on a lithium cohort. 3. Tremor, weight gain, diarrhea, psychological complaints. *Acta Psychiatr Scand* 1988; **78**: 434–41.
- 267 Fairbrother F, Petzl N, Scott JG, Kisely S. Lithium can cause hyperthyroidism as well as hypothyroidism: a systematic review of an under-recognised association. *Aust N Z J Psychiatry* 2019; published online March 7. DOI:10.1177/0004867419833171.
- 268 Lee S, Chow CC, Wing YK, Shek CC. Thyroid abnormalities during chronic lithium treatment in Hong Kong Chinese: a controlled study. *J Affect Disord* 1992; **26**: 173–78.
- 269 McKnight RF, Adida M, Budge K, Stockton S, Goodwin GM, Geddes JR. Lithium toxicity profile: a systematic review and meta-analysis. *Lancet* 2012; **379**: 721–28.
- 270 McDermott MT, Burman KD, Hofeldt FD, Kidd GS. Lithium-associated thyrotoxicosis. *Am J Med* 1986; **80**: 1245–48.
- 271 Grootens KP, Meijer A, Hartong EG, et al. Weight changes associated with antiepileptic mood stabilizers in the treatment of bipolar disorder. *Eur J Clin Pharmacol* 2018; **74**: 1485–89.
- 272 Chengappa KN, Chalasani L, Brar JS, Parepally H, Houck P, Levine J. Changes in body weight and body mass index among psychiatric patients receiving lithium, valproate, or topiramate: an open-label, nonrandomized chart review. *Clin Ther* 2002; **24**: 1576–84.
- 273 Belcastro V, D'Egidio C, Striano P, Verrotti A. Metabolic and endocrine effects of valproic acid chronic treatment. *Epilepsy Res* 2013; **107**: 1–8.
- 274 Malhi GS, Barch DM, McIntyre R, et al. Balanced efficacy, safety, and tolerability recommendations for the clinical management of bipolar disorder. *Bipolar Disord* 2012; **14** (suppl 2): 1–21.
- 275 Carvalho AF, Sharma MS, Brunoni AR, Vieta E, Fava GA. The safety, tolerability and risks associated with the use of newer generation antidepressant drugs: a critical review of the literature. *Psychother Psychosom* 2016; **85**: 270–88.
- 276 Blackwell B. Adverse effects of antidepressant drugs. Part 1: monoamine oxidase inhibitors and tricyclics. *Drugs* 1981; **21**: 201–19.
- 277 Oderda LH, Young JR, Asche CV, Pepper GA. Psychotropic-related hip fractures: meta-analysis of first-generation and second-generation antidepressant and antipsychotic drugs. *Ann Pharmacother* 2012; **46**: 917–28.
- 278 Suetani S, Whiteford HA, McGrath JJ. An urgent call to address the deadly consequences of serious mental disorders. *JAMA Psychiatry* 2015; **72**: 1166–67.
- 279 Jarskog LF, Hamer RM, Catellier DJ, et al, and the METS Investigators. Metformin for weight loss and metabolic control in overweight outpatients with schizophrenia and schizoaffective disorder. *Am J Psychiatry* 2013; **170**: 1032–40.
- 280 Siskind DJ, Leung J, Russell AW, Wysoczanski D, Kisely S. Metformin for clozapine associated obesity: a systematic review and meta-analysis. *PLoS One* 2016; **11**: e0156208.
- 281 Siskind DJ, Russell AW, Gamble C, et al. Treatment of clozapine-associated obesity and diabetes with exenatide in adults with schizophrenia: a randomized controlled trial (CODEX). *Diabetes Obes Metab* 2018; **20**: 1050–55.
- 282 Siskind D, Hahn M, Correll CU, et al. Glucagon-like peptide-1 receptor agonists for antipsychotic-associated cardio-metabolic risk factors: a systematic review and individual participant data meta-analysis. *Diabetes Obes Metab* 2019; **21**: 293–302.
- 283 Diabetes Prevention Program (DPP) Research Group. The Diabetes Prevention Program (DPP) description of lifestyle intervention. *Diabetes Care* 2002; **25**: 2165–71.
- 284 Knowler WC, Barrett-Connor E, Fowler SE, et al, and the Diabetes Prevention Program Research Group. Reduction in the incidence of type 2 diabetes with lifestyle intervention or metformin. *N Engl J Med* 2002; **346**: 393–403.
- 285 Vancampfort D, Firth J, Correll CU, et al. The impact of pharmacological and non-pharmacological interventions to improve physical health outcomes in people with schizophrenia: a meta-review of meta-analyses of randomized controlled trials. *World Psychiatry* 2019; **18**: 53–66.
- 286 Simon V, van Winkel R, De Hert M. Are weight gain and metabolic side effects of atypical antipsychotics dose dependent? A literature review. *J Clin Psychiatry* 2009; **70**: 1041–50.
- 287 Shepherd J, Cobbe SM, Ford I, et al, and the West of Scotland Coronary Prevention Study Group. Prevention of coronary heart disease with pravastatin in men with hypercholesterolemia. *N Engl J Med* 1995; **333**: 1301–07.
- 288 Ford I, Murray H, Packard CJ, Shepherd J, Macfarlane PW, Cobbe SM, and the West of Scotland Coronary Prevention Study Group. Long-term follow-up of the West of Scotland Coronary Prevention Study. *N Engl J Med* 2007; **357**: 1477–86.
- 289 Downs JR, Clearfield M, Weis S, et al. Primary prevention of acute coronary events with lovastatin in men and women with average cholesterol levels: results of AFCAPS/TexCAPS. Air Force/Texas Coronary Atherosclerosis Prevention Study. *JAMA* 1998; **279**: 1615–22.
- 290 Hippisley-Cox J, Coupland C, Brindle P. Development and validation of QRISK3 risk prediction algorithms to estimate future risk of cardiovascular disease: prospective cohort study. *BMJ* 2017; **357**: j2099.
- 291 Goff DC Jr, Lloyd-Jones DM, Bennett G, et al. 2013 ACC/AHA guideline on the assessment of cardiovascular risk: a report of the American College of Cardiology/American Heart Association Task Force on Practice Guidelines. *J Am Coll Cardiol* 2014; **63** (25 Pt B): 2935–59.
- 292 Reboussin DM, Allen NB, Griswold ME, et al. Systematic review for the 2017 ACC/AHA/AAPA/ABC/ACPM/AGS/APhA/ASH/ASPC/NMA/PCNA guideline for the prevention, detection, evaluation, and management of high blood pressure in adults: a report of the American College of Cardiology/American Heart Association Task Force on Clinical Practice Guidelines. *J Am Coll Cardiol* 2018; **71**: 2176–98.

- 293 Whelton PK, Carey RM, Aronow WS, et al. 2017 ACC/AHA/AAPA/ABC/ACPM/AGS/APhA/ASH/ASPC/NMA/PCNA guideline for the prevention, detection, evaluation, and management of high blood pressure in adults: a report of the American College of Cardiology/American Heart Association Task Force on Clinical Practice Guidelines. *J Am Coll Cardiol* 2018; **71**: e127–248.
- 294 NICE. Cardiovascular disease: risk assessment and reduction, including lipid modification (CG181). London: National Institute for Health and Care Excellence, 2014.
- 295 Schmid C, Grohmann R, Engel RR, Rütther E, Kropp S. Cardiac adverse effects associated with psychotropic drugs. *Pharmacopsychiatry* 2004; **37** (suppl 1): 65–69.
- 296 Ptaszynski P, Kaczmarek K, Ruta J, Klingenheben T, Wranicz JK. Metoprolol succinate vs. ivabradine in the treatment of inappropriate sinus tachycardia in patients unresponsive to previous pharmacological therapy. *Europace* 2013; **15**: 116–21.
- 297 Lally J, Brook J, Dixon T, et al. Ivabradine, a novel treatment for clozapine-induced sinus tachycardia: a case series. *Ther Adv Psychopharmacol* 2014; **4**: 117–22.
- 298 Stroup TS, Gray N. Management of common adverse effects of antipsychotic medications. *World Psychiatry* 2018; **17**: 341–56.
- 299 Rose VL. APA practice guideline for the treatment of patients with schizophrenia. *Am Fam Physician* 1997; **56**: 1217–20.
- 300 Bollini P, Pampallona S, Orza MJ, Adams ME, Chalmers TC. Antipsychotic drugs: is more worse? A meta-analysis of the published randomized control trials. *Psychol Med* 1994; **24**: 307–16.
- 301 Halstead SM, Barnes TRE, Speller JC. Akathisia: prevalence and associated dysphoria in an in-patient population with chronic schizophrenia. *Br J Psychiatry* 1994; **164**: 177–83.
- 302 Kumar R, Sachdev PS. Akathisia and second-generation antipsychotic drugs. *J Neurol Sci* 2009; **285** (suppl 1): S122.
- 303 Kane JM, Fleischhacker WW, Hansen L, Perlis R, Pikalov A 3rd, Assunção-Talbot S. Akathisia: an updated review focusing on second-generation antipsychotics. *J Clin Psychiatry* 2009; **70**: 627–43.
- 304 Miller CH, Fleischhacker WW. Managing antipsychotic-induced acute and chronic akathisia. *Drug Saf* 2000; **22**: 73–81.
- 305 Poyurovsky M, Epshtein S, Fuchs C, Schneidman M, Weizman R, Weizman A. Efficacy of low-dose mirtazapine in neuroleptic-induced akathisia: a double-blind randomized placebo-controlled pilot study. *J Clin Psychopharmacol* 2003; **23**: 305–08.
- 306 Stryjer R, Grupper D, Strous R, Poyurovsky M, Weizman A. Mianserin for the rapid improvement of chronic akathisia in a schizophrenia patient. *Eur Psychiatry* 2004; **19**: 237–38.
- 307 Rathbone J, Soares-Weiser K. Anticholinergics for neuroleptic-induced acute akathisia. *Cochrane Database Syst Rev* 2006; **4**: CD003727.
- 308 Mentzel TQ, van der Snoek R, Lieverse R, et al. Clozapine monotherapy as a treatment for antipsychotic-induced tardive dyskinesia: a meta-analysis. *J Clin Psychiatry* 2018; **79**: 17r11852.
- 309 Leung JG, Breden EL. Tetrabenazine for the treatment of tardive dyskinesia. *Ann Pharmacother* 2011; **45**: 525–31.
- 310 Solmi M, Pigato G, Kane JM, Correll CU. Treatment of tardive dyskinesia with VMAT-2 inhibitors: a systematic review and meta-analysis of randomized controlled trials. *Drug Des Devel Ther* 2018; **12**: 1215–38.
- 311 Burger DM, Wiestner T, Hubler M, Binder H, Keiser M, Arnold S. Effect of anticholinergics (atropine, glycopyrrolate) and prokinetics (metoclopramide, cisapride) on gastric motility in beagles and labrador retrievers. *J Vet Med A Physiol Pathol Clin Med* 2006; **53**: 97–107.
- 312 Every-Palmer S, Ellis PM, Nowitz M, et al. The porirua protocol in the treatment of clozapine-induced gastrointestinal hypomotility and constipation: a pre-and post-treatment study. *CNS Drugs* 2017; **31**: 75–85.
- 313 Chen SY, Ravindran G, Zhang Q, Kiselis S, Siskind D. Treatment strategies for clozapine-induced sialorrhea: a systematic review and meta-analysis. *CNS Drugs* 2019; **33**: 225–38.
- 314 Taylor MJ, Rudkin L, Hawton K. Strategies for managing antidepressant-induced sexual dysfunction: systematic review of randomised controlled trials. *J Affect Disord* 2005; **88**: 241–54.
- 315 Fish LH, Schwartz HL, Cavanaugh J, Steffes MW, Bantle JP, Oppenheimer JH. Replacement dose, metabolism, and bioavailability of levothyroxine in the treatment of hypothyroidism. Role of triiodothyronine in pituitary feedback in humans. *N Engl J Med* 1987; **316**: 764–70.
- 316 Lazarus JH. Lithium and thyroid. *Best Pract Res Clin Endocrinol Metab* 2009; **23**: 723–33.
- 317 Garofeanu CG, Weir M, Rosas-Arellano MP, Henson G, Garg AX, Clark WF. Causes of reversible nephrogenic diabetes insipidus: a systematic review. *Am J Kidney Dis* 2005; **45**: 626–37.
- 318 Battle DC, von Riette AB, Gaviria M, Grupp M. Amelioration of polyuria by amiloride in patients receiving long-term lithium therapy. *N Engl J Med* 1985; **312**: 408–14.
- 319 Singer I, Oster JR, Fishman LM. The management of diabetes insipidus in adults. *Arch Intern Med* 1997; **157**: 1293–301.
- 320 Markowitz GS, Radhakrishnan J, Kambham N, Valeri AM, Hines WH, D'Agati VD. Lithium nephrotoxicity: a progressive combined glomerular and tubulointerstitial nephropathy. *J Am Soc Nephrol* 2000; **11**: 1439–48.
- 321 Prochaska JJ, Das S, Young-Wolff KC. Smoking, mental illness, and public health. *Annu Rev Public Health* 2017; **38**: 165–85.
- 322 Callaghan RC, Veldhuizen S, Jeyasingh T, et al. Patterns of tobacco-related mortality among individuals diagnosed with schizophrenia, bipolar disorder, or depression. *J Psychiatr Res* 2014; **48**: 102–10.
- 323 Tidey JW, Miller ME. Smoking cessation and reduction in people with chronic mental illness. *BMJ* 2015; **351**: h4065.
- 324 Roberts E, Evins AE, McNeill A, Robson D. Efficacy and tolerability of pharmacotherapy for smoking cessation in adults with serious mental illness: a systematic review and network meta-analysis. *Addiction* 2016; **111**: 599–612.
- 325 Vermeulen JM, van Rooijen G, van de Kerkhof MP, Sutherland AL, Correll CU, de Haan L. Clozapine and long-term mortality risk in patients with schizophrenia: a systematic review and meta-analysis of studies lasting 1.1–12.5 years. *Schizophr Bull* 2019; **45**: 315–29.
- 326 Cipriani A, Furukawa TA, Salanti G, et al. Comparative efficacy and acceptability of 21 antidepressant drugs for the acute treatment of adults with major depressive disorder: a systematic review and network meta-analysis. *Lancet* 2018; **391**: 1357–66.
- 327 Slade M. Implementing shared decision making in routine mental health care. *World Psychiatry* 2017; **16**: 146–53.
- 328 WHO. Management of physical health conditions in adults with severe mental disorders: WHO guidelines. Geneva: World Health Organization, 2018.
- 329 Weinberger AH, Streck JM, Pacek LR, Goodwin RD. Nondaily cigarette smoking is increasing among people with common mental health and substance use problems in the United States: data from representative samples of US adults, 2005–2014. *J Clin Psychiatry* 2018; **79**: 17m11945.
- 330 Public Health England. Health matters: reducing health inequalities in mental illness. 2018. <https://www.gov.uk/government/publications/health-matters-reducing-health-inequalities-in-mental-illness/health-matters-reducing-health-inequalities-in-mental-illness> (accessed Dec 1, 2018).
- 331 Ashton M, Rigby A, Galletly C. What do 1000 smokers with mental illness say about their tobacco use? *Aust N Z J Psychiatry* 2013; **47**: 631–36.
- 332 Malpass D, Higgs S. How is cigarette smoking maintained in depression? Experiences of cigarette smoking in people diagnosed with depression. *Addict Res Theory* 2009; **17**: 64–79.
- 333 Rütther T, Bobes J, De Hert M, et al, and the European Psychiatric Association. EPA guidance on tobacco dependence and strategies for smoking cessation in people with mental illness. *Eur Psychiatry* 2014; **29**: 65–82.
- 334 Gilbody S, Peckham E, Bailey D, et al. Smoking cessation for people with severe mental illness (SCIMITAR+): a pragmatic randomised controlled trial. *Lancet Psychiatry* 2019; **6**: 379–90.
- 335 Public Health England. Smokefree mental health services in England: implementation document for providers of mental health services. 2016. [https://assets.publishing.service.gov.uk/government/uploads/system/uploads/attachment\\_data/file/779497/SF\\_MH\\_services\\_in\\_England\\_Guidance\\_for\\_Providers.pdf](https://assets.publishing.service.gov.uk/government/uploads/system/uploads/attachment_data/file/779497/SF_MH_services_in_England_Guidance_for_Providers.pdf) (accessed Oct 10, 2019).
- 336 Robson D, Spaducci G, McNeill A, et al. Effect of implementation of a smoke-free policy on physical violence in a psychiatric inpatient setting: an interrupted time series analysis. *Lancet Psychiatry* 2017; **4**: 540–46.

- 337 Bianco CL. Rates of electronic cigarette use among adults with a chronic mental illness. *Addict Behav* 2019; **89**: 1–4.
- 338 Hickling LM, Perez-Iglesias R, McNeill A, et al. A pre-post pilot study of electronic cigarettes to reduce smoking in people with severe mental illness. *Psychol Med* 2018; **49**: 1033–1040.
- 339 Curtis J, Zhang C, McGuigan B, et al. y-QUIT: smoking prevalence, engagement, and effectiveness of an individualized smoking cessation intervention in youth with severe mental illness. *Front Psychiatry* 2018; **9**: 683.
- 340 Harker K, Cheeseman H. Shifting culture and taking action to reduce smoking and premature death among people with a mental health condition. *J Public Ment Health* 2016; **15**: 184–87.
- 341 Firth J, Rosenbaum S, Stubbs B, Gorczyński P, Yung AR, Vancampfort D. Motivating factors and barriers towards exercise in severe mental illness: a systematic review and meta-analysis. *Psychol Med* 2016; **46**: 2869–81.
- 342 Firth J, Cotter J, Elliott R, French P, Yung AR. A systematic review and meta-analysis of exercise interventions in schizophrenia patients. *Psychol Med* 2015; **45**: 1343–61.
- 343 Stubbs B, Rosenbaum S, Vancampfort D, Ward PB, Schuch FB. Exercise improves cardiorespiratory fitness in people with depression: a meta-analysis of randomized control trials. *J Affect Disord* 2016; **190**: 249–53.
- 344 Vancampfort D, Rosenbaum S, Ward PB, Stubbs B. Exercise improves cardiorespiratory fitness in people with schizophrenia: a systematic review and meta-analysis. *Schizophr Res* 2015; **169**: 453–57.
- 345 Kodama S, Saito K, Tanaka S, et al. Cardiorespiratory fitness as a quantitative predictor of all-cause mortality and cardiovascular events in healthy men and women: a meta-analysis. *JAMA* 2009; **301**: 2024–35.
- 346 Firth J, Stubbs B, Rosenbaum S, et al. Aerobic exercise improves cognitive functioning in people with schizophrenia: a systematic review and meta-analysis. *Schizophr Bull* 2017; **43**: 546–56.
- 347 Vancampfort D, Rosenbaum S, Schuch FB, Ward PB, Probst M, Stubbs B. Prevalence and predictors of treatment dropout from physical activity interventions in schizophrenia: a meta-analysis. *Gen Hosp Psychiatry* 2016; **39**: 15–23.
- 348 Stubbs B, Vancampfort D, Rosenbaum S, et al. Dropout from exercise randomized controlled trials among people with depression: a meta-analysis and meta regression. *J Affect Disord* 2016; **190**: 457–66.
- 349 Codella R, Ialacqua M, Terruzzi I, Luzi L. May the force be with you: why resistance training is essential for subjects with type 2 diabetes mellitus without complications. *Endocrine* 2018; **62**: 14–25.
- 350 Jelleyman C, Yates T, O'Donovan G, et al. The effects of high-intensity interval training on glucose regulation and insulin resistance: a meta-analysis. *Obes Rev* 2015; **16**: 942–61.
- 351 Gordon BR, McDowell CP, Hallgren M, Meyer JD, Lyons M, Herring MP. Association of efficacy of resistance exercise training with depressive symptoms: meta-analysis and meta-regression analysis of randomized clinical trials. *JAMA Psychiatry* 2018; **75**: 566–76.
- 352 Krogh J, Lorentzen AK, Subhi Y, Nordentoft M. Predictors of adherence to exercise interventions in patients with clinical depression: a pooled analysis from two clinical trials. *Ment Health Phys Act* 2014; **7**: 50–54.
- 353 Gakidou E, Afshin A, Abajobir AA, et al, and the GBD 2016 Risk Factors Collaborators. Global, regional, and national comparative risk assessment of 84 behavioural, environmental and occupational, and metabolic risks or clusters of risks, 1990–2016: a systematic analysis for the Global Burden of Disease Study 2016. *Lancet* 2017; **390**: 1345–422.
- 354 Albaugh VL, Singareddy R, Mauger D, Lynch CJ. A double blind, placebo-controlled, randomized crossover study of the acute metabolic effects of olanzapine in healthy volunteers. *PLoS One* 2011; **6**: e22662.
- 355 Elman I, Borsook D, Lukas SE. Food intake and reward mechanisms in patients with schizophrenia: implications for metabolic disturbances and treatment with second-generation antipsychotic agents. *Neuropsychopharmacology* 2006; **31**: 2091–120.
- 356 Mangurian C, Sreshta N, Seligman H. Food insecurity among adults with severe mental illness. *Psychiatr Serv* 2013; **64**: 931–32.
- 357 Sotos-Prieto M, Bhupathiraju SN, Mattei J, et al. Association of changes in diet quality with total and cause-specific mortality. *N Engl J Med* 2017; **377**: 143–53.
- 358 Ma C, Avenell A, Bolland M, et al. Effects of weight loss interventions for adults who are obese on mortality, cardiovascular disease, and cancer: systematic review and meta-analysis. *BMJ* 2017; **359**: j4849.
- 359 Teasdale SB, Ward PB, Rosenbaum S, Samaras K, Stubbs B. Solving a weighty problem: systematic review and meta-analysis of nutrition interventions in severe mental illness. *Br J Psychiatry* 2017; **210**: 110–18.
- 360 Teasdale SB, Latimer G, Byron A, et al. Expanding collaborative care: integrating the role of dietitians and nutrition interventions in services for people with mental illness. *Australas Psychiatry* 2018; **26**: 47–49.
- 361 Diabetes Prevention Program Research Group. The 10-year cost-effectiveness of lifestyle intervention or metformin for diabetes prevention: an intent-to-treat analysis of the DPP/DPPOS. *Diabetes Care* 2013; **36**: 4172–75.
- 362 Knowler WC, Fowler SE, Hamman RF, et al, and the Diabetes Prevention Program Research Group. 10-year follow-up of diabetes incidence and weight loss in the Diabetes Prevention Program Outcomes Study. *Lancet* 2009; **374**: 1677–86.
- 363 Ma J, Yank V, Xiao L, et al. Translating the Diabetes Prevention Program lifestyle intervention for weight loss into primary care: a randomized trial. *JAMA Intern Med* 2013; **173**: 113–21.
- 364 Rosenbaum S, Tiedemann A, Sherrington C, Curtis J, Ward PB. Physical activity interventions for people with mental illness: a systematic review and meta-analysis. *J Clin Psychiatry* 2014; **75**: 964–74.
- 365 Stubbs B, Vancampfort D, Hallgren M, et al. EPA guidance on physical activity as a treatment for severe mental illness: a meta-review of the evidence and Position Statement from the European Psychiatric Association (EPA), supported by the International Organization of Physical Therapists in Mental Health (IOPTMH). *Eur Psychiatry* 2018; **54**: 124–44.
- 366 Erickson ZD, Mena SJ, Pierre JM, et al. Behavioral interventions for antipsychotic medication-associated obesity: a randomized, controlled clinical trial. *J Clin Psychiatry* 2016; **77**: e183–89.
- 367 Lally J, Watkins R, Nash S, et al. The representativeness of participants with severe mental illness in a psychosocial clinical trial. *Front Psychiatry* 2018; **9**: 654.
- 368 Czosnek L, Lederman O, Cormie P, Zopf E, Stubbs B, Rosenbaum S. Health benefits, safety and cost of physical activity interventions for mental health conditions: a meta-review to inform translation efforts. *Ment Health Phys Act* 2018; published online Nov 12. DOI:10.1016/j.mhpa.2018.11.001.
- 369 Firth J, Rosenbaum S, Stubbs B, Vancampfort D, Carney R, Yung AR. Preferences and motivations for exercise in early psychosis. *Acta Psychiatr Scand* 2016; **134**: 83–84.
- 370 Fuller NR, Carter H, Schofield D, et al. Cost effectiveness of primary care referral to a commercial provider for weight loss treatment, relative to standard care: a modelled lifetime analysis. *Int J Obes* 2014; **38**: 1104–09.
- 371 Rosenbaum S, Vancampfort D, Steel Z, Newby J, Ward PB, Stubbs B. Physical activity in the treatment of post-traumatic stress disorder: a systematic review and meta-analysis. *Psychiatry Res* 2015; **230**: 130–36.
- 372 Bartels SJ, Pratt SI, Aschbrenner KA, et al. Pragmatic replication trial of health promotion coaching for obesity in serious mental illness and maintenance of outcomes. *Am J Psychiatry* 2015; **172**: 344–52.
- 373 Daumit GL, Dickerson FB, Wang NY, et al. A behavioural weight-loss intervention in persons with serious mental illness. *N Engl J Med* 2013; **368**: 1594–602.
- 374 Rosenbaum S, Hobson-Powell A, Davison K, et al. The role of sport, exercise, and physical activity in closing the life expectancy gap for people with mental illness: an international consensus statement by Exercise and Sports Science Australia, American College of Sports Medicine, British Association of Sport and Exercise Science, and Sport and Exercise Science New Zealand. *Transl J Am Coll Sports Med* 2018; **3**: 72–73.
- 375 Strong A, Stoutenberg M, Hobson-Powell A, Hargreaves M, Beeler H, Stamatakis E. An evaluation of physical activity training in Australian medical school curricula. *J Sci Med Sport* 2017; **20**: 534–38.
- 376 Lobelo F, de Quevedo IG. The evidence in support of physicians and health care providers as physical activity role models. *Am J Lifestyle Med* 2016; **10**: 36–52.

- 377 Campbell F, Holmes M, Everson-Hock E, et al. A systematic review and economic evaluation of exercise referral schemes in primary care: a short report. *Health Technol Assess* 2015; **19**: 1–110.
- 378 Firth J, Carney R, Elliott R, et al. Exercise as an intervention for first-episode psychosis: a feasibility study. *Early Interv Psychiatry* 2018; **12**: 307–15.
- 379 Firth J, Carney R, Jerome L, Elliott R, French P, Yung AR. The effects and determinants of exercise participation in first-episode psychosis: a qualitative study. *BMC Psychiatry* 2016; **16**: 36.
- 380 Fuller NR, Colagiuri S, Schofield D, et al. A within-trial cost-effectiveness analysis of primary care referral to a commercial provider for weight loss treatment, relative to standard care: an international randomised controlled trial. *Int J Obes* 2013; **37**: 828–34.
- 381 Aschbrenner KA, Naslund JA, Shevenell M, Kinney E, Bartels SJ. A pilot study of a peer-group lifestyle intervention enhanced with mhealth technology and social media for adults with serious mental illness. *J Nerv Ment Dis* 2016; **204**: 483–86.
- 382 Björkenstam E, Burström B, Vinnerljung B, Kosidou K. Childhood adversity and psychiatric disorder in young adulthood: an analysis of 107,704 Swedes. *J Psychiatr Res* 2016; **77**: 67–75.
- 383 Caneo C, Marston L, Bellón JÁ, King M. Examining the relationship between physical illness and depression: is there a difference between inflammatory and non-inflammatory diseases? A cohort study. *Gen Hosp Psychiatry* 2016; **43**: 71–77.
- 384 Campion J. Public mental health: the local tangibles. *Psychiatrist* 2013; **37**: 238–43.
- 385 The Lancet. Syndemics: health in context. *Lancet* 2017; **389**: 881.
- 386 Naylor C, Das P, Ross S, Honeyman M, Thompson J, Gilbert H. Bringing together physical and mental health: a new frontier for integrated care. London: The King's Fund, 2016.
- 387 NHS England. Improving physical healthcare for people living with severe mental illness (SMI) in primary care: guidance for CCGs. London: National Health Service England, 2018.
- 388 Te Pou. The physical health of people with mental health conditions and/or addiction. Auckland: Te Pou o te Whakaaro Nui, 2017.
- 389 Working Group for Improving the Physical Health of People with SMI. Improving the physical health of adults with severe mental illness: essential actions (OP100). London: Royal College of Psychiatrists, 2016.
- 390 NHS Digital. Mental health of children and young people in England, 2017. 2018. <https://digital.nhs.uk/data-and-information/publications/statistical/mental-health-of-children-and-young-people-in-england/2017/2017> (accessed Nov 4, 2018).
- 391 The Academy of Medical Sciences. Multimorbidity: a priority for global health research. 2018. <https://acmedsci.ac.uk/file-download/82222577> (accessed Oct 15, 2018).
- 392 NICE. Multimorbidity: clinical assessment and management. 2016. <https://www.nice.org.uk/guidance/ng56> (accessed Oct 15, 2018).
- 393 US Department of Health and Human Services. Multiple chronic conditions—a strategic framework: optimum health and quality of life for individuals with multiple chronic conditions. Washington, DC: US Department of Health and Human Services, 2010.
- 394 Starfield B, Shi L, Macinko J. Contribution of primary care to health systems and health. *Milbank Q* 2005; **83**: 457–502.
- 395 Archer J, Bower P, Gilbody S, et al. Collaborative care for depression and anxiety problems. *Cochrane Database Syst Rev* 2012; **10**: CD006525.
- 396 Panagioti M, Bower P, Kontopantelis E, et al. Association between chronic physical conditions and the effectiveness of collaborative care for depression: an individual participant data meta-analysis. *JAMA Psychiatry* 2016; **73**: 978–89.
- 397 Coventry P, Lovell K, Dickens C, et al. Integrated primary care for patients with mental and physical multimorbidity: cluster randomised controlled trial of collaborative care for patients with depression comorbid with diabetes or cardiovascular disease. *BMJ* 2015; **350**: h638.
- 398 Coventry PA, Hudson JL, Kontopantelis E, et al. Characteristics of effective collaborative care for treatment of depression: a systematic review and meta-regression of 74 randomised controlled trials. *PLoS One* 2014; **9**: e108114.
- 399 Katon WJ, Lin EH, Von Korff M, et al. Collaborative care for patients with depression and chronic illnesses. *N Engl J Med* 2010; **363**: 2611–20.
- 400 McGregor M, Lin EH, Katon WJ. TEAMcare: an integrated multicondition collaborative care program for chronic illnesses and depression. *J Ambul Care Manage* 2011; **34**: 152–62.
- 401 Ludman EJ, Peterson D, Katon WJ, et al. Improving confidence for self care in patients with depression and chronic illnesses. *Behav Med* 2013; **39**: 1–6.
- 402 Ma J, Rosas LG, Ly N, et al. Effect of integrated behavioral weight loss treatment and problem-solving therapy on body mass index and depressive symptoms among patients with obesity and depression: the RAINBOW randomized clinical trial. *JAMA* 2019; **321**: 869–79.
- 403 Druss BG, von Esenwein SA, Glick GE, et al. Randomized trial of an integrated behavioral health home: the health outcomes management and evaluation (HOME) study. *Am J Psychiatry* 2017; **174**: 246–55.
- 404 Reilly S, Planner C, Gask L, et al. Collaborative care approaches for people with severe mental illness. *Cochrane Database Syst Rev* 2013; **11**: CD009531.
- 405 Swartz MS, Swanson JW, Hiday VA, Borum R, Wagner HR, Burns BJ. Violence and severe mental illness: the effects of substance abuse and nonadherence to medication. *Am J Psychiatry* 1998; **155**: 226–31.
- 406 O'Brien A, Fahmy R, Singh SP. Disengagement from mental health services. A literature review. *Soc Psychiatry Psychiatr Epidemiol* 2009; **44**: 558–68.
- 407 Buckley PF, Brown ES. Prevalence and consequences of dual diagnosis. *J Clin Psychiatry* 2006; **67**: e01.
- 408 Patel V, Saxena S, Lund C, et al. The Lancet Commission on global mental health and sustainable development. *Lancet* 2018; **392**: 1553–98.
- 409 Power RA, Verweij KJ, Zuhair M, et al. Genetic predisposition to schizophrenia associated with increased use of cannabis. *Mol Psychiatry* 2014; **19**: 1201–04.
- 410 Morojele NK, Saban A, Seeday S. Clinical presentations and diagnostic issues in dual diagnosis disorders. *Curr Opin Psychiatry* 2012; **25**: 181–86.
- 411 Simpson TL, Lehavot K, Petrakis IL. No wrong doors: findings from a critical review of behavioral randomized clinical trials for individuals with co-occurring alcohol/drug problems and posttraumatic stress disorder. *Alcohol Clin Exp Res* 2017; **41**: 681–702.
- 412 Bennett ME, Bradshaw KR, Catalano LT. Treatment of substance use disorders in schizophrenia. *Am J Drug Alcohol Abuse* 2017; **43**: 377–90.
- 413 Tobacco Advisory Group of the Royal College of Physicians. Nicotine without smoke: tobacco harm reduction. London: Royal College of Physicians, 2016.
- 414 Mackenzie J, Kesner C. Mental health funding and the SDGs: what now and who pays? London: Overseas Development Institute, 2016.
- 415 Lund C, Alem A, Schneider M, et al. Generating evidence to narrow the treatment gap for mental disorders in sub-Saharan Africa: rationale, overview and methods of AFFIRM. *Epidemiol Psychiatr Sci* 2015; **24**: 233–40.
- 416 Mugisha J, Ssebunnya J, Kigozi FN. Towards understanding governance issues in integration of mental health into primary health care in Uganda. *Int J Ment Health Syst* 2016; **10**: 25.
- 417 Mugisha J, De Hert M, Stubbs B, Basangwa D, Vancampfort D. Physical health policies and metabolic screening in mental health care systems of sub-Saharan African countries: a systematic review. *Int J Ment Health Syst* 2017; **11**: 31.
- 418 Ludwick JJ, Oosthuizen PP. Screening for and monitoring of cardio-metabolic risk factors in outpatients with severe mental illness in a primary care setting. *Afr J Psychiatry (Johannesbg)* 2009; **12**: 287–92.
- 419 Petersen I, Evans-Lacko S, Semrau M, et al. Promotion, prevention and protection: interventions at the population- and community-levels for mental, neurological and substance use disorders in low- and middle-income countries. *Int J Ment Health Syst* 2016; **10**: 30.
- 420 Docherty M, Shaw K, Goulding L, et al. Evidence-based guideline implementation in low and middle income countries: lessons for mental health care. *Int J Ment Health Syst* 2017; **11**: 8.
- 421 Fairall LR, Folb N, Timmerman V, et al. Educational outreach with an integrated clinical tool for nurse-led non-communicable chronic disease management in primary care in South Africa: a pragmatic cluster randomised controlled trial. *PLoS Med* 2016; **13**: e1002178.

- 422 Cornick R, Watrus C, Eastman T, et al. Crossing borders: the PACK experience of spreading a complex health system intervention across low-income and middle-income countries. *BMJ Glob Health* 2018; 3 (suppl 5): e001088.
- 423 Burns JK, Tomita A. Traditional and religious healers in the pathway to care for people with mental disorders in Africa: a systematic review and meta-analysis. *Soc Psychiatry Psychiatr Epidemiol* 2015; 50: 867–77.
- 424 Akol A, Moland KM, Babirye JN, Engebretsen IMS. “We are like co-wives”: traditional healers’ views on collaborating with the formal Child and Adolescent Mental Health System in Uganda. *BMC Health Serv Res* 2018; 18: 258.
- 425 Petersen I, Lund C, Bhana A, Flisher AJ, and the Mental Health and Poverty Research Programme Consortium. A task shifting approach to primary mental health care for adults in South Africa: human resource requirements and costs for rural settings. *Health Policy Plan* 2012; 27: 42–51.
- 426 Matsuzaka CT, Wainberg M, Norcini Pala A, et al. Task shifting interpersonal counseling for depression: a pragmatic randomized controlled trial in primary care. *BMC Psychiatry* 2017; 17: 225.
- 427 Hanlon C. Next steps for meeting the needs of people with severe mental illness in low- and middle-income countries. *Epidemiol Psychiatr Sci* 2017; 26: 348–54.
- 428 Javadi D, Feldhaus I, Mancuso A, Ghaffar A. Applying systems thinking to task shifting for mental health using lay providers: a review of the evidence. *Glob Ment Health (Camb)* 2017; 4: e14.
- 429 Hoefl TJ, Fortney JC, Patel V, Unützer J. Task-sharing approaches to improve mental health care in rural and other low-resource settings: a systematic review. *J Rural Health* 2018; 34: 48–62.
- 430 WHO. International Telecommunication Union. Be he@lthy, be mobile. Geneva: World Health Organization, 2014.
- 431 WHO Global Observatory for eHealth. mHealth: new horizons for health through mobile technologies: second global survey on eHealth. Geneva: World Health Organization, 2011.
- 432 Chow CK, Redfern J, Hillis GS, et al. Effect of lifestyle-focused text messaging on risk factor modification in patients with coronary heart disease: a randomized clinical trial. *JAMA* 2015; 314: 1255–63.
- 433 Chow CK, Islam SMS, Farmer A, et al. Text2PreventCVD: protocol for a systematic review and individual participant data meta-analysis of text message-based interventions for the prevention of cardiovascular diseases. *BMJ Open* 2016; 6: e012723.
- 434 Thakkar J, Kurup R, Laba T-L, et al. Mobile telephone text messaging for medication adherence in chronic disease: a meta-analysis. *JAMA Intern Med* 2016; 176: 340–49.
- 435 Covolo L, Ceretti E, Moneda M, Castaldi S, Gelatti U. Does evidence support the use of mobile phone apps as a driver for promoting healthy lifestyles from a public health perspective? A systematic review of randomized control trials. *Patient Educ Couns* 2017; 100: 2231–43.
- 436 Safavi K, Mathews SC, Bates DW, Dorsey ER, Cohen AB. Top-funded digital health companies and their impact on high-burden, high-cost conditions. *Health Aff (Millwood)* 2019; 38: 115–23.
- 437 Torous J, Firth J. Bridging the dichotomy of actual versus aspirational digital health. *World Psychiatry* 2018; 17: 108–09.
- 438 Fleming T, Bavin L, Lucassen M, Stasiak K, Hopkins S, Merry S. Beyond the trial: systematic review of real-world uptake and engagement with digital self-help interventions for depression, low mood, or anxiety. *J Med Internet Res* 2018; 20: e199.
- 439 Partridge SR, Redfern J. Strategies to engage adolescents in digital health interventions for obesity prevention and management. *Healthcare (Basel)* 2018; 6: 70.
- 440 Dunford E, Trevena H, Goodsell C, et al. FoodSwitch: a mobile phone app to enable consumers to make healthier food choices and crowdsourcing of national food composition data. *JMIR Mhealth Uhealth* 2014; 2: e37.
- 441 Waring ME, Jake-Schoffman DE, Holovatska MM, Mejia C, Williams JC, Pagoto SL. Social media and obesity in adults: a review of recent research and future directions. *Curr Diab Rep* 2018; 18: 34.
- 442 Bastawrous A, Armstrong MJ. Mobile health use in low- and high-income countries: an overview of the peer-reviewed literature. *J R Soc Med* 2013; 106: 130–42.
- 443 Firth J, Cotter J, Torous J, Bucci S, Firth JA, Yung AR. Mobile phone ownership and endorsement of “mHealth” among people with psychosis: a meta-analysis of cross-sectional studies. *Schizophr Bull* 2016; 42: 448–55.
- 444 Muralidharan A, Niv N, Brown CH, et al. Impact of online weight management with peer coaching on physical activity levels of adults with serious mental illness. *Psychiatr Serv* 2018; 69: 1062–68.
- 445 Macias C, Panch T, Hicks YM, et al. Using smartphone apps to promote psychiatric and physical well-being. *Psychiatr Q* 2015; 86: 505–19.
- 446 Young CL, Trapani K, Dawson S, et al. Efficacy of online lifestyle interventions targeting lifestyle behaviour change in depressed populations: a systematic review. *Aust N Z J Psychiatry* 2018; 52: 834–46.
- 447 Torous J, Andersson G, Bertagnoli A, et al. Towards a consensus around standards for smartphone apps and digital mental health. *World Psychiatry* 2019; 18: 97–98.
- 448 Godlee F. Prevention is the role of governments, not health systems. *BMJ* 2019; 364: 1228.
- 449 Tyrrell J, Mulugeta A, Wood AR, et al. Using genetics to understand the causal influence of higher BMI on depression. *Int J Epidemiol* 2018; published online Nov 13. DOI:10.1093/ije/dyy223.
- 450 Markowitz S, Friedman MA, Arent SM. Understanding the relation between obesity and depression: causal mechanisms and implications for treatment. *Clin Psychol Sci Pract* 2008; 15: 1–20.
- 451 Gurillo P, Jauhar S, Murray RM, MacCabe JH. Does tobacco use cause psychosis? Systematic review and meta-analysis. *Lancet Psychiatry* 2015; 2: 718–25.
- 452 Wootton RE, Richmond RC, Stuijffzand BG, et al. Causal effects of lifetime smoking on risk for depression and schizophrenia: evidence from a Mendelian randomisation study. *bioRxiv* 2018; published online Dec 20. DOI:10.1101/381301 (preprint).
- 453 Choi KW, Chen C-Y, Stein MB, et al, and the Major Depressive Disorder Working Group of the Psychiatric Genomics Consortium. Assessment of bidirectional relationships between physical activity and depression among adults: a 2-sample Mendelian randomization study. *JAMA Psychiatry* 2019; published online Jan 23. DOI:10.1001/jamapsychiatry.2018.4175.
- 454 Schuch FB, Vancampfort D, Firth J, et al. Physical activity and incident depression: a meta-analysis of prospective cohort studies. *Am J Psychiatry* 2018; 175: 631–48.
- 455 Pampel FC, Krueger PM, Denney JT. Socioeconomic disparities in health behaviors. *Annu Rev Sociol* 2010; 36: 349–70.

© 2019 Elsevier Ltd. All rights reserved.